



SOCIETY OF
GYNECOLOGIC SURGEONS

20/20 VISION
EMBRACING INNOVATION
THAT BUILDS ON
PAST SUCCESS

VIRTUAL

**46th ANNUAL
SCIENTIFIC
MEETING**

JULY 9-12, 2020

PATRICK CULLIGAN, MD
SCIENTIFIC PROGRAM CHAIR

PETER L. ROSENBLATT, MD
SGS PRESIDENT

Jointly Provided by Rush University Medical Center

Fellow Scholars

We hope you will join the Twitter conversation by following @Gynsurgery and connect using #SGS2020 Join/Follow the 2020 SGS Fellow Scholars.



Tara Marczak, DO
Mount Auburn Hospital



Anne Porter, MD, MPH
UT Southwestern
Medical School



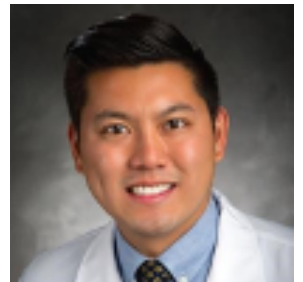
Elliott Richards, MD
Cleveland Clinic
Foundation



Whitney Ross, MD
Penn State Health



Jessica Traylor, MD
Northwestern
University Feinberg
School of Medicine



Jeffrey Woo, MD
Scripps Clinic Medical

*Supported by Coloplast, CooperSurgical, Intuitive Surgical,
OBG Management, Olympus, Pacira Pharmaceuticals,
Renovia and the SGS Education Fund.*

PURPOSEFULLY DESIGNED

FOR PELVIC ORGAN PROLAPSE AND
STRESS URINARY INCONTINENCE



Ostomy Care / Continence Care / Wound & Skin Care / Interventional Urology

Coloplast Corp. Minneapolis, MN 55411 / Interventional Urology Surgical Support 1-800-258-3476

www.coloplast.us The Coloplast logo is a registered trademark of Coloplast A/S.

© 2020 Coloplast Corp. All rights reserved.

 **Coloplast**

PM-09770 02.20

Table of Contents

Welcome from the President	2
Mission Statement	4
Honored Mentors	5–8
Board of Directors	10
Scientific Program Committee	11
Premier Sponsors	12–14
Friday's Industry Sponsored Events	15–16
Saturday's Industry Sponsored Events	17–19
Sunday's Industry Sponsored Events	20–21
General Meeting Information	22
CME Information	24–25
New SGS Members	26
Telinde Lecture	28
Special Guest Lecture	29
Thursday Sessions	30–37
Friday Sessions	38–44
Saturday Sessions	45–58
Sunday Sessions	59–60
PG Courses	60
Video Café	61–67
Non-Oral Posters	68–83
2019 SGS Scientific Program Award Winners	84–85
SHARE Donors	86–99
SGS Membership	100
Active Members	101–121
Life Members	122–125
Honorary Members	126–127
In Memoriam	128
SGS Administrative Staff	132

Message from the President



As the President of the Society of Gynecologic Surgeons for the 2020 Annual Scientific Meeting, I am pleased to welcome you to the Virtual SGS Meeting, July 9-12, 2020. This was not how we anticipated that we would be holding the 46th Annual Scientific Meeting but we are still thrilled to be able to offer you a superb program. Dr Patrick Culligan and the Scientific Program Committee have put together an outstanding program, with exceptional keynote speakers, unique panel discussions, and a combination of podium presentation and videos that cover a variety of timely and interesting topics in gynecologic surgery. The social events will be virtual this year and we are still planning a special session at 2:30 pm Eastern Time on Saturday, July 11 to honor our award winners. The theme of this year's meeting is "20/20 Vision: Embracing Innovation that Builds on Past Success." Innovation is the key to this virtual meeting.

We are offering four superb postgraduate courses, two of which will take place in the morning of Sunday, July 12 at 10 am Eastern Time. Dr Mikio Nihira is the chair of "Enhanced Recovery after Surgery: Overcoming Barriers to Implementation," and Dr Charles Hanes will be heading up "It's All About the Apex: The Key to Successful POP Surgery." We have two additional postgraduate courses Sunday afternoon at 3 pm Eastern Time. Dr Cara King will be leading "Total Laparoscopic Hysterectomy: Pushing the Envelope," and Dr Vince Lucente will chair "Transvaginal Reconstructive Pelvic Surgery using Graft Augmentation post FDA."

I am thrilled to tell you about our exceptional keynote speakers. We will hear from Marc Beer, a serial entrepreneur and the co-founder, chairman, and CEO of Renovia, Inc., whose talk is entitled "A Primer on Medical Device Innovation – How to Avoid Common Pitfalls while Realizing your Vision." This year's TeLinde Lecture, entitled "Artificial Intelligence in Surgery" will be delivered by Dr Vicente Gracias, a professor of surgery at Robert Wood Johnson University Hospital.

Our program chair, Dr Culligan, will moderate two unique panel discussions that everyone is sure to enjoy – "Work-Life Balance & Gynecologic Surgery," which will feature various perspectives from Drs. Kristie Green, Sally Huber, Catherine Matthews and Charley Rardin. The second panel discussion is entitled "Understanding, Managing and Benefiting from your E-presence," and will include Heather Schueppert, Chief Marketing Officer at Unified Physician Management, Brad Bowman, MD, and Dr Peter Lotze.

It is important to recognize our industry partners that have stayed with us during this difficult time. There will be several interesting product theaters with engaging speakers that will round out the 2020 virtual program. I know you will agree with me that this program offers all attendees not only an exceptional educational experience, and also an opportunity to use our innovative and creative spirit to get the most out of this virtual event.

The "special sauce" of our Society will continue to resonate throughout the sessions and awards ceremony and demonstrate why SGS is such a unique and special organization. I look forward to joining all of you in this virtual experience!

Sincerely,

A handwritten signature in black ink, appearing to read "Peter L. Rosenblatt". The signature is fluid and cursive, written over a white background.

Peter L Rosenblatt, MD
SGS President

Discuss the data
and learn more about
EXPAREL in women's
surgical procedures

Talk to an EXPAREL representative
to find out more.

[Click here to get started.](#)

Visit www.EXPAREL.com
for more information.

NON-OPIOID
EXPAREL[®]
(bupivacaine liposome injectable suspension)



©2020 Pacira BioSciences, Inc.
Parsippany, NJ 07054 PP-EX-US-5569 06/20

Mission Statement

The mission of the Society of Gynecologic Surgeons is to promote excellence in gynecologic surgery through acquisition of knowledge and improvement of skills, advancement of basic and clinical research, and professional and public education.

SGS is a Society with a strong belief in mentorship. On the following pages we are pleased to recognize the mentors who have been honored by those whose careers they helped develop while also fostering the mission of SGS.



SOCIETY OF
GYNECOLOGIC SURGEONS

In Memoriam

Leo J. Dunn, MD
Charter Member
February 2020

S. Robert Kovac, MD
December 2019

Thomas Julian, MD
February 2020

Edwin A. Bowman MD
May 2020

Honor Your Mentor



Patrick Culligan, MD

Pat you have been an amazing friend and mentor for over 15 years. Thank you for all you have done for me and SGS!

Miles Murphy, MD



John A. Fantl, MD

To one of the best humans we know, you are a friend, a mentor and all around gentleman.

Lots of love from all the
Ascher-Walshes

Honor Your Mentor



Kimberly Kenton, MD

You are an exemplary and visionary leader who has dedicated her life to teaching. Thank you for guiding us, we remain forever grateful.

Your Fellows



S. Robert Kovac, MD

Expert vaginal surgeon, Mentor, and Friend

Carl Zimmerman, MD

Honor Your Mentor



Emily Weber LeBrun, MD

Your mentorship and guidance have been invaluable. Thank you for all you do.

Your partners, residents, staff, and medical students.



Magdy Milad, MD, MS

Dr. Milad, you are an excellent mentor and inspire me through your teaching, guidance, and encouragement. Thank you for developing the SES program as well!

Mark Lewis, DO

Honor Your Mentor



Paul Pettit, MD

Thank you for elevating gynecologic surgery and sharing the wisdom you developed through years of surgical innovation. You've made us all better surgeons and people.

Mayo Clinic Florida Minimally Invasive Gynecologic Surgery Fellowship Program Faculty and Fellows

SURGICEL[®] Powder Absorbable Hemostat



The next generation
of the SURGICEL[®]
Family of Absorbable
Hemostats

ETHICON
PART OF THE *Johnson-Johnson* FAMILY OF COMPANIES

Shaping
the future
of surgery

©2020 Ethicon US, LLC. All rights reserved.
137228-200416

Board of Directors

Executive Committee

President – Peter L. Rosenblatt, MD

President Elect – Miles Murphy, MD

Secretary/Treasurer – Carl Zimmerman, MD

Assistant Secretary/Treasurer – Cheryl Iglesia, MD

Past President – Rajiv Gala, MD

Member-At-Large – Cara King, DO

Member-At-Large – Rebecca Rogers, MD

Executive Director – Nancy Frankel, PhD

Committee Chairs

Membership Committee – Nicole Donnellan, MD

Research Committee – Kate Meriwether, MD

Education Committee – Michael Moen, MD

Postgraduate Committee – Rosanne Kho, MD

Scientific Program Committee – Patrick Culligan, MD

2020 Scientific Program Committee

Patrick Culligan, MD – Scientific Program Chair
Megan Schimpf, MD – Scientific Program Co-Chair
Peter L. Rosenblatt, MD – SGS President
Miles Murphy, MD – SGS President Elect
Rajiv Gala, MD – SGS Immediate Past President
Brittany Star Hampton, MD – Past Scientific Program Chair
Peter Jeppson, MD – Abstract Review Chair
Michael Moen, MD – Video Review Chair
Lennie Siegel, BBA, CPA – SGS Staff
Nancy Frankel, PhD – Executive Director

Video Reviewers

Michael Moen, MD (Chair)	Cara King, DO
Arnold Advincula, MD	Jaime Long, MD
Tieneka Baker, MD	James Robinson, MD
Chi Chiung Chen, MD	Norman Rosenblum, MD
Catrina Crisp, MD	Ambereen Sleemi, MD
Nicole Donnellan, MD	Andrew Sokol, MD
Dobie Giles, MD	Megan Wasson, DO
Daniel Gruber, MD	Emily Weber LeBrun, MD
Gerald Harkins, MD	Linda Yang, MD

Abstract Reviewers

Peter Jeppson, MD (Chair)	Nicole Korbly, MD
Charles Ascher-Walsh, MD	Saifuddin Mama, MD
Sunil Balgobin, MD	Stephen Metz, MD
Ralph Chesson, MD	Mikio Nihira, MD
Keith Downing, MD	Amy Park, MD
Gena Dunivan, MD	Danielle Patterson, MD
David Ellington, MD	Monica Richardson, MD
Robert Gutman, MD	Jonathan Shepherd, MD
Oz Harmanli, MD	Christine Vaccaro, DO

Premier Sponsors

SGS THANKS OUR PREMIER SPONSORS FOR THEIR SUPPORT.

Diamond Sponsorship



Gold Sponsorship



Premier Sponsors

SGS THANKS OUR PREMIER SPONSORS FOR THEIR SUPPORT.

Silver Sponsorship



Premier Sponsors

SGS THANKS OUR PREMIER SPONSORS FOR THEIR SUPPORT.

Bronze Sponsorship



FEMSelect™
EnPlace

gynesONICS®

 neomedic
international

OLYMPUS®

UroCure

ADVANCING WOMEN'S HEALTH

Friday Industry Sponsored Events

Advances in da Vinci Energy: Delivering Value in Women's Healthcare

Friday, July 10, 2020 4:00 PM – 4:30 PM ET

Intuitive presents the new da Vinci Energy platform, designed to amplify speed, precision, and versatility in its advanced energy portfolio, including faster Vessel Sealer Extend with the E-100 generator, and SynchroSeal, offering multifunction and single-step transection. Dr. Swainston will present the valuable impact on care for his patients with da Vinci Energy.

INTUITIVE



**Darin Swainston, MD,
FACOG**
Robotic Gynecological
Surgeons and OB/GYNs
Las Vegas, NV

REGISTER NOW

Circumferential Radial Dilation, a Novel Approach to Uterine Access in Challenging Anatomies with Definity Cervical Dilator

Friday, July 10, 2020 4:30 pm – 4:45 pm ET

Definity is the first technological advance in the arena of cervical dilation to access the uterine cavity via the cervix in the last 140 years. The presentation will include:

- Technological overview, including the principals of circumferential radial dilation and the Definity SureAccess guide balloon
- Indications and patient selection
- Procedural technique

HOLOGIC
The Science of Life



Holly R Miller, MD
A Woman's Place
Naples, FL

REGISTER NOW

Friday Industry Sponsored Events

Introduction to the Sonata Transcervical Fibroid Ablation System

Friday, July 10, 2020 4:45 pm – 5:00 pm ET

Come learn about the Sonata Transcervical Fibroid Ablation System. Dr. Chudnoff will present a quick overview of the data, followed by a video presentation of a live Sonata Treatment.

[REGISTER NOW](#)



Scott Chudnoff, MD
Stamford Health

Saturday Industry Sponsored Events

REGISTER NOW



Bulkamid Webinar: A New Treatment Paradigm for Patients with SUI **Saturday, July 11, 2020 9:00 am – 10:00 am ET**

Bulkamid received FDA approval on January 28th, 2020 for the treatment of SUI due to ISD in adult women who have SUI or stress predominant mixed incontinence. The Bulkamid Urethral Bulking System has been utilized in Europe for over 12 years and has been used successfully as a treatment in over 75,000 women. The webinar details the unique properties of Bulkamid as a Hydrogel, the published RCT data of Bulkamid vs TVT, a perspective on treating the modern patient and feedback from current US users. The Bulkamid Urethral Bulking System has a proprietary precision delivery system that allows for effective and durable outcomes for patients suffering from SUI.



Andrea Pezzella, MD
Director of Southern
UroGynecology, Center for
Incontinence and Female
Pelvic Medicine
West Columbia, SC



Vincent Lucente, MD MBA
Director of The Institute for
Female Pelvic Medicine and
Reconstructive Surgery
Allentown, PA
Medicine
West Columbia, SC



Tomi Mikkola, MD
Professor and Head of the
Urogynecology Department
at Helsinki University
Department of Obstetrics
and Gynecology
Finland

Innovations on Sacrospinous Ligament Fixation, the Benefits of Anchorsure Device **Saturday, July 11, 2020 12:00 PM – 12:15 PM**

This product theater will introduce an anchor device to perform an easy and safe SSLF. The versatility of Anchorsure that fits with any reconstruction technique whether if it's using biologic graft or native tissue will be discussed, as well as the reduction of post-op pelvic pain compared to suturing devices.

REGISTER NOW



Conrad Duncan MD
Ascension Medicine
Saint Agnes Hospital
Johns Hopkins Medicine

Saturday Industry Sponsored Events



The FEMSelect EnPlace™: A Meshless, Limited Dissection & Truly Minimally Invasive SSLF Option

Saturday, July 11, 2020 12:15 pm - 12:30 pm ET

Drs. Erickson and Lucente will provide a brief product overview and clinical data synopsis of EnPlace, a mesh free approach for pelvic floor fixation. There will be a discussion of key procedural steps and why EnPlace should be the SSLF platform of choice.



Ty B Erickson, MD FPMRS
Rosemark Women Care
Specialists
Idaho Falls, ID



Vincent Lucente, MD MBA
Institute for Female Pelvic
Medicine and Reconstructive
Surgery
Allentown, PA

[REGISTER NOW](#)

Saturday Industry Sponsored Events

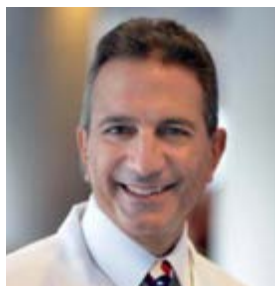
REGISTER NOW

Clinical Experience with a Robotic System for Trans-vaginal Gynecologic Surgery*

Saturday, July 11, 2020 2:30 pm – 3:00 pm ET



A presentation on an innovative robotic technology that enables transvaginal gynecologic surgery. This surgical approach, in conjunction with the enabling technology may expand the clinical utilization of transvaginal hysterectomy beyond its current rate of approximately 16% of all hysterectomies. An in-depth examination of the factors that will allow vaginal hysterectomy to finally move from a niche technique to the preferred method of hysterectomy.



The Past, Present and Future of Vaginal Surgery: From Heaney Clamp to Hominis Robot

Robert Zurawin, MD

Associate Professor Baylor College of Medicine, Department of OB/GYN



Evidence based approach to Innovations in Vaginal Robotic Surgery

S. Abbas Shobeiri, MD, MBA, FACOG, FACS, CMPE

Professor of Obstetrics and Gynecology, Vice Chair, INOVA Fairfax Hospital



Clinical Experience with the Hominis® Surgical System in Total Transvaginal Robotic Hysterectomy with Salpingo-Oophorectomy

Dr. Jan Baekelandt, MD, PhD

Gynecological Oncology and Endoscopy, Imelda Hospital, Bonheiden, Antwerpen, Belgium

*The Hominis System is pending FDA clearance and is not for sale in the United States

Sunday Industry Sponsored Events



Hemostasis in Gynecologic Surgery Sunday, July 12 9:00 am – 9:45 am ET

A presentation on the different hemostatic agents that are available for the Gynecologic Surgeon; and allowing participants to gain a better understanding of the use of the right agent for the right bleeding situation.



**James Kondrup, MD,
FACOG**
Gulf Coast Medical Group
Women's Health & Wellness
Venice, Florida

[REGISTER NOW](#)

Monitoring Quality Improvement is the Path Forward: A Discussion with Charley Rardin Sunday, July 12, 2020 9:45 am – 10:00 am ET



Dr. Charley Rardin will review the rationale behind the registry, importance of benchmarking SUI outcomes, explain the process to become a site, describe differences between a Quality Improvement Registry and IRB study and highlight the simplified data entry. Also, learn how an industry collaboration is helping to propel the registry forward. Includes Q & A.



Charles Rardin, MD, FACOG, FACS
Chief of Surgical Operations,
Women & Infants Hospital
Professor of Obstetrics and
Gynecology, The Warren Alpert
Medical School of Brown University
Providence, RI



David Staskin, MD
Chief Medical Officer,
UroCure
Associate Professor of
Urology, Tufts University
School of Medicine

[REGISTER NOW](#)

Sunday Industry Sponsored Events



BOTOX® for OAB*: Your Role in Supporting the Patient Journey

Sunday, July 12, 2020 2:00 pm – 3:00 pm ET

Designed for OAB Care Team members to help improve their BOTOX® knowledge. This program outlines a streamlined, patient-centric approach to the BOTOX® patient journey.

[REGISTER NOW](#)



Vincente Luente, MD, MBA
Institute for Female Pelvic
Medicine
Allentown, PA

General Meeting Information

Welcome to SGS 2020! So that you may take full advantage of everything this meeting has to offer, please note the following:

Virtual Meeting Platform

SGS will be using the **Zoom Webinar** platform to host its virtual meeting. You will receive individual links to join the general session for each day (Thursday, Friday, Saturday). If you are registered for a Postgraduate Course(s), you will receive separate links to join the course.

SGS is also offering Industry Sponsored Product Theatres before the general session or Postgraduate Courses and during breaks. Registration for product theatres is free. Links to register are located on the SGS website and in the final program. Once registered, you will receive a link to join the Product Theatre for that day (Friday, Saturday Sunday). The same link will work for any of the Product Theatres that particular day but a different link is needed for each day.

The Zoom Webinar platform does not allow one to join more than one meeting room at a time on a given device. Thus, if during a break you wish to join the Product Theatre, you will be logged out of the general session and will need to log back in. If you wish to have the general session to remain open during a break and still view a Product Theatre, you may link to the Product Theatre on a different device such as your tablet or cell phone.

Event App

The SGS 2020 mobile app is your all in one event guide and puts everything you need to know right onto your mobile device!

- Browse and search sessions, speakers, abstracts, and supporters
- Build your schedule and add personal meetings
- See gaps in your daily calendar and easily fill them
- Share your thoughts through session comments on built in social media
- Receive notifications of upcoming Product Theatres
- Take notes, access scientific abstracts and much more

Download the **Myltinerary by ScholarOne** mobile app from either Apple iOS App Store or Android's Play Store. Search for the SGS 2020 event and download the event data.

Apple iOS App Store - <https://tinyurl.com/sgs2020app>

Android's Play Store - <https://tinyurl.com/sgs2020android>

The SGS 2020 App is also available as an Online Planner on your computer. Review the schedule, search authors for their presentations, view abstracts from the comfort of your desktop computer. Available now at <https://ativsoftware.com/appinfo.php?page=Home&project=SGS20&server=eventpilotadmin.com>

We're Dedicated to Women's Health.

Committed to helping you treat pelvic floor disorders since 1995 – and collaborating to build the future.



Market leader in the pelvic floor space



Comprehensive portfolio of solutions



Physician-driven research and innovation



Clinical support beyond the products

- Sales & OR Support
- Physician Training
- Patient Education
- Society Partnerships
- Dedicated Health Economics and Market Access Team



Clinical investments in evidence-based treatment options

\$32M in post-market 522 studies

Well-studied portfolio of MUS products

- 100+ clinical articles and abstracts
- **Now Available:** 36-month 522 data for the Solyx™ Single Incision Sling

Learn more about the power of partnership with Boston Scientific at [bostonscientific.com/PFPPartnership](https://www.bostonscientific.com/PFPPartnership).

Caution: U.S. Federal law restricts this device to sale by or on the order of a physician trained in use of surgical mesh for repair of stress urinary incontinence.

All images are the property of Boston Scientific. All trademarks are the property of their respective owners.

© 2020 Boston Scientific Corporation or its affiliates. All rights reserved. WH-839812-AA JUN 2020

CME Information

Program Chair: Patrick Culligan, MD

Target Audience: Gynecologic Surgeons

Program Goal: The goal of the annual scientific meeting is to provide member and non-member attendees with a forum for the latest and most innovative developments in gynecologic surgery. This will be accomplished through lecture, slide, video and poster presentations. Oral presentations are followed by a discussion and a question and answer session.

To Obtain Your CME: CME evaluations will be conducted electronically. You will receive an email within one week following the end of the SGS meeting requesting you to fill out an evaluation to attain your CME credits. Even if you do not wish to request CME please fill out the evaluation questions. Your feedback is critical to us to help identify topics and speakers of interest to you. In order to receive CME credits, evaluations must be completed.

If your preferred email address is not in your current SGS profile, please email taylor@sgsonline.org to update your contact information.

Learning Objectives

At the conclusion of the meeting attendees should be able to:

- 1) Evaluate evidence regarding when vaginal, laparoscopic or robotic approaches to gynecologic surgery are indicated
- 2) Apply methods for optimizing online presence as a marketing tool
- 3) Summarize outcome data of new and innovative gynecologic surgery technologies
- 4) Apply knowledge of pelvic anatomy and perioperative care best practices to minimize peri-operative complications
- 5) Apply knowledge of medical device innovation to avoid common pitfalls
- 6) Describe how to conduct and evaluate high quality surgical education research to maximize trainee education
- 7) Identify pathways to achieve meaningful work-like balance while attaining important career goals

CME Information

ACCREDITATION

Accreditation Statement: This activity has been planned and implemented in accordance with the accreditation requirements and policies of the Accreditation Council for Continuing Medical Education (ACCME) through the joint providership of Rush University Medical Center and the Society of Gynecologic Surgeons. The Rush University Medical Center is accredited by the ACCME to provide continuing medical education for physicians.

Designation Statement: Rush University Medical Center designates this Live activity for a maximum of 22 AMA PRA Category 1 Credit(s)[™]. Physicians should claim only the credit commensurate with the extent of their participation in the activity.

The 22 credits are inclusive of 1) 12.5 credits for Scientific Meeting 2) 2.0 credits for VideoFest 3) 3.75 credits for Postgraduate Course 1,2,3 and 4.

Disclosure and Conflicts of Interest

Disclosure: Rush University Medical Center adheres to ACCME Essential Areas, Standards, and Policies regarding industry support of continuing medical education. Disclosure of the Activity Director(s), Planning Committee Members(s), Speaker(s), Author(s) or Anyone in a Position to Control Content regarding commercial relationships will be made known at the activity. Speakers are required to openly disclose any limitations of data and/or any discussion of off-label, experimental, or investigational uses of drugs or devices in their presentations.

Resolution of Conflicts of Interest

In accordance with ACCME Standards for Commercial Support of CME, Rush University Medical Center will implement mechanisms, prior to the planning and implementation of this CME activity, to identify and resolve any conflicts of interest for all individuals in a position to control content of this CME activity.

Disclosures:

A complete list of disclosures from presenters and all others involved in the scientific program may be found [HERE](#).

Welcome to the New SGS Members

Christopher DeStephano, MD

Jacksonville, FL

Proposer: Paul Pettit, MD

Alexis Dieter, MD

Chapel Hill, NC

Proposer: David Rahn, MD

Maria Florian-Rodriguez, MD

Dallas, TX

Proposer: Marlene Corton, MD

Sara Houlihan, MD

New Westminster, BC

Proposer: Shunaha Kim-Fine, MD

Jana Illston, MD

Atlanta, GA

Proposer: Holly Richter, PhD, MD

Soo Kwon, MD

New York, NY

Proposer: Catherine Matthews, MD

Veronica Lerner, MD

Bronx, NY

Proposer: Nicole Donnellan, MD

Annetta Madsen, MD

St. Paul, MN

Proposer: B. Star Hampton, MD

Isuzu Meyer, MD

Birmingham, AL

Proposer: Holly E. Richter, PhD, MD

Paul Moore, MD

Jackson, MS

Proposer: Matthew Barker, MD

Thythy Pham, MD

Maywood, IL

Proposer: Kimberly Kenton, MD

Katie Propst, MD

Cleveland, OH

Proposer: Beri Ridgeway, MD

Christina Rogers, DO

El Paso, TX

Proposer: Daniel Gruber, MD

Jennifer Schmitt, DO

St Paul, MN

Proposer: John Gebhart, MD

Jonathan Shaw, MD

Lebanon, NH

Proposer: Kris Strohbehm, MD

Lauren Siff, MD

Richmond, VA

Proposer: Mark Walters, MD

Katelyn Smithling, MD

Springfield, MA

Proposer: Cheryl Iglesia, MD

Emily Von Bargaen, DO

Boston, MA

Proposer: Peter L. Rosenblatt, MD

Featured Speakers



Vicente Gracias, MD

Dr Gracias is Professor of Surgery, Senior Vice Chancellor for Clinical Affairs of RBHS and President of Rutgers Health Group (RHG). Organized as a nonprofit subsidiary corporation of Rutgers University, RHG is an integrated group practice incorporating 1,000 clinical faculty from across Robert Wood Johnson Medical School, New Jersey Medical School, Rutgers Cancer Institute of New Jersey, University Behavioral Health Care, Rutgers School of Dental Medicine, and the School of Nursing. In these

dual roles, Dr Gracias leads the growth and evolution of the Rutgers clinical enterprise during this time of systemic change in health care. Dr Gracias works closely with the Deans, institute directors, faculty leaders and health system partners to encourage collaboration, advance quality and excellence, and provide strategic direction. With his characteristic energy and enthusiasm, Dr Gracias helps steward mission areas including but not limited to innovation in the paradigm of patient-centered, population-based, and value-driven health care practices throughout RBHS, the University, and surrounding health systems. He also serves as lead liaison with the principal teaching hospitals of RBHS, insurers and payers, and patient communities. Dr Gracias recently served as interim Dean of the Robert Wood Johnson Medical School where he helped orchestrate its successful financial turn around and start toward value driven care. He is also Vice President of Health Affairs for Rutgers University, and Chief Academic Officer for RWJBarnabas Health.

Fellowship trained and board certified in general surgery, trauma surgery, and surgical critical care, he has served as chief of acute care surgery and as the director of both the adult and pediatric trauma centers at Robert Wood Johnson University Hospital (RWJUH). Dr Gracias received his undergraduate degree from the University of Notre Dame and his MD from the University of Utah School of Medicine. He completed residency training in general surgery at the University of Illinois in Chicago, Metro Group Hospitals, Research Fellowship at University of Illinois and Fellowship in trauma/surgical critical care at the University of Pennsylvania (Penn) Medical Center where he served on faculty with distinction for 12 years before transitioning to Rutgers.

**Dr Gracias will present "Artificial Intelligence in Surgery"
on Friday, July 10 at 6:15 pm ET.**

Special Guest Lecture



Marc Beer

Co-Founder, Chairman & CEO of Renovia

Marc brings more than 25 years of development and commercialization experience in biotechnology, pharmaceuticals, devices, and diagnostics. Marc founded Renovia with Ramon Iglesias, MD and Yolanda Lorié in August 2016 and successfully closed a Series A financing with leading healthcare venture capital funds. Marc is the former Chief Executive Officer of Aegerion Pharmaceuticals, Inc.

(NASDAQ: AEGR). Aegerion is a biopharmaceutical company dedicated to the development and commercialization of innovative therapies for patients with debilitating rare diseases. Marc took the company public in October 2010. The Company's first marketed product, JXTAPID® (lomitapide) was approved by the US Food and Drug Administration in December 2012 for homozygous familial hypercholesterolemia. During his tenure, JXTAPID obtained marketing approval in 36 countries. Additionally, Aegerion acquired its second product, MYALEPT® (metreleptin), approved in the US for generalized lipodystrophy, an ultra-rare disease.

In April 2000, Marc became the Founding CEO of ViaCell (NASDAQ: VIAC), a biotechnology company specializing in the collection, preservation, and development of umbilical cord blood stem cells, and over a period of seven years led the company from its inception to a rapidly growing and robust commercial organization. Under Marc's leadership, the company grew to more than 300 employees, went public in 2005 and was ultimately acquired in 2007 by PerkinElmer (NYSE: PKI).

While serving as CEO of ViaCell, Marc also served as a member of the board of directors of Erytech Pharma (NASDAQ: ERYP), a publicly traded biopharmaceutical company. Prior to ViaCell, Marc held various positions within Genzyme, most recently as Vice President of Global Marketing where he was responsible for the commercial launch of several products addressing rare disease populations on a global scale.

Prior to Genzyme, he held a variety of sales and marketing roles in the pharmaceutical and diagnostic divisions of Abbott Laboratories (NYSE: ABT). He also was a former member of the Mass Life Science Board of the Commonwealth of Massachusetts and served on the Biotechnology Industry Organization (BIO) Emerging Companies Section Governing Board.

Marc Beer will present "From Just an Idea to Standard of Care" on Saturday, July 11 at 11:15 AM ET.

Thursday, July 9 Meeting Schedule



SOCIETY OF
GYNECOLOGIC SURGEONS

Thursday, July 09, 2020

ALL TIMES ARE EASTERN STANDARD TIME

5:00 PM - 5:15 PM

Welcome

Virtual General Session

5:15 PM - 6:50 PM

First Scientific Session

Moderator: Peter Rosenblatt, MD

Virtual General Session

5:15 PM

Oral Presentation 01

(PACT) PERMANENT VERSUS DELAYED- ABSORBABLE MONOFILAMENT SUTURE FOR VAGINAL GRAFT ATTACHMENT DURING MINIMALLY-INVASIVE TOTAL HYSTERECTOMY AND SACROCOLPOPEXY: A MULTICENTER RANDOMIZED CLINICAL TRIAL

C. A. Matthews²; E. J. Geller¹; B. Henley⁴; E. M. Myers³;
A. Dieter¹; K. Kenton⁵; B. Parnell⁴; M. G. Mueller⁵;
C. Lewicky-Gaup⁵; J. M. Wu¹

¹University of North Carolina, Chapel Hill, NC, ²Urology, Wake Forest University, Winston Salem, NC, ³Atrium Health, Charlotte, NC, ⁴Ob/Gyn, Augusta University Health, Augusta, GA, ⁵Ob/Gyn, Northwestern Feinberg School of Medicine, Chicago, IL.

DISCUSSANT: Shawn Menefee, MD

5:30 PM

Oral Presentation 02

THE INFLUENCE OF POSTOPERATIVE ENVIRONMENT ON PATIENT PAIN AND SATISFACTION FOLLOWING PELVIC RECONSTRUCTIVE SURGERY; A RANDOMIZED CONTROLLED TRIAL

A. M. Hill¹; C. C. Crisp¹; A. Shatkin-Margolis¹;
T. Tam¹; E. Yook²; S. D. Kleeman¹; J. Yeung¹;
R. N. Pauls¹

¹Female Pelvic Medicine and Reconstructive Surgery, TriHealth Good Samaritan, Cincinnati, OH, ²Hatton Institute, TriHealth Good Samaritan, Cincinnati, OH.

DISCUSSANT: Stephen Metz, MD

5:45 PM

[Oral Poster 01](#)

RANDOMIZED CONTROLLED TRIAL ASSESSING THE EFFECT OF PATIENT EDUCATION ON POSTOPERATIVE OPIOID CONSUMPTION AFTER PROLAPSE SURGERY

[K. Buono](#)¹; E. Whitcomb²; N. Guaderrama²; E. Lee¹; J. Ihara²; N. T. Sudol^{2, 1}; F. L. Lane¹; J. Lee²; B. Dave¹; T. Brueseke¹

¹FPMRS, University of California, Irvine, Orange, CA, ²FPMRS, Southern California Permanente Medical Group, Irvine, CA.

5:49 PM

[Oral Poster 02](#)

THE EFFECT OF MUSIC LISTENING ON PREOPERATIVE ANXIETY IN FEMALE PELVIC MEDICINE AND RECONSTRUCTIVE SURGERY: A RANDOMIZED CONTROLLED TRIAL

[Y. B. Chen](#)¹; H. Barnes¹; L. Westbay¹; W. Birte²; M. Shannon³; M. Acevedo Alvarez¹; E. R. Mueller¹; T. T. Pham¹

¹Female Pelvic Medicine and Reconstructive Surgery, Departments of Obstetrics/Gynecology and Urology, Loyola University Medical Center, Maywood, IL, ²Obstetrics and Gynecology, Swedish Covenant Hospital, Chicago, IL, ³Obstetrics and Gynecology, Virginia Women's Center, Richmond, VA.

5:53 PM

[Oral Poster 03](#)

UNDERSTANDING PATIENT INTEREST AND PREFERENCES FOR SAME-DAY DISCHARGE AFTER MINIMALLY INVASIVE HYSTERECTOMY

[L. Westbay](#)¹; A. Dixon¹; M. Tipton¹; W. Adams²; S. Wagner¹; S. C. Graziano¹; L. C. Yang¹

¹Obstetrics and Gynecology, Loyola University Medical Center, Maywood, IL, ²Loyola University of Chicago, Chicago, IL.

5:57 PM

Oral Poster Q & A

Thursday, July 09, 2020

6:00 PM

Video Presentation 01
MAINTAINING AND RECLAIMING HEMOSTASIS IN LAPAROSCOPIC SURGERY

C. E. Foley; T. T. Lee

Minimally Invasive Gynecologic Surgery, Magee Womens Hospital of UPMC, Pittsburgh, PA.

6:10 PM

Oral Presentation 03
BEYOND THE PRESACRAL SPACE: CLINICAL RELEVANCE TO SACROCOLPOPEXY PROCEDURES

A. M. Hare; P. Sawyer; M. Corton

Ob/Gyn, UT Southwestern, Dallas, TX.

DISCUSSANT: Oz Harmanli, MD

6:25 PM

Oral Presentation 04
A MODEL FOR PAIN MANAGEMENT IN PATIENTS UNDERGOING PELVIC RECONSTRUCTIVE SURGERY: A PROSPECTIVE CLINICAL PRACTICE STUDY

A. S. Ramaseshan¹; D. M. O'Sullivan²; A. Steinberg¹; E. Tunitsky¹

¹Division of Female Pelvic Medicine and Reconstructive Surgery, Hartford Hospital, Hartford, CT, ²Department of Research Administration, Hartford HealthCare, Hartford, CT.

DISCUSSANT: Ladin Yurteri-Kaplan, MD

6:40 PM

Video Presentation 02
THE SURGICAL APPROACH TO THE OBLITERATED ANTERIOR CUL-DE-SAC

C. Arora; J. Kim; A. P. Advincula

Obstetrics and Gynecology, Columbia University, New York, NY.

6:50 PM - 7:00 PM

Break

7:00 PM - 9:00 PM

Second Scientific Session

Moderator: Cecile Ferrando, MD

Virtual General Session

7:00 PM

Oral Presentation 05

RISK OF VENOUS THROMBOEMBOLISM EVENTS AFTER DIFFERENT ROUTES OF SURGERY FOR PELVIC ORGAN PROLAPSE, USING THE AMERICAN COLLEGE OF SURGEONS NATIONAL SURGICAL QUALITY IMPROVEMENT PROGRAM

W. Chong^{1,2}; A. Bui²; K. Menhaji³

¹Inspira Health, Vineland/Mullica Hill, NJ, ²Icahn School of Medicine at Mount Sinai, New York, NY, ³Mount Sinai Medical Center, New York, NY.

DISCUSSANT: Gena Dunivan, MD

7:15 PM



Oral Presentation 06

DEVELOPMENT OF A PREOPERATIVE PREDICTION TOOL FOR POSTOPERATIVE COMPLICATIONS AFTER HYSTERECTOMY

P. Schmidt; N. Kamdar; C. W. Swenson; S. Uppal; D. Morgan

Ob/Gyn - Urogynecology, University of Michigan, Ann Arbor, MI.

DISCUSSANT: Cara King, DO

7:30 PM

Oral Presentation 07

COMPARISON OF 30-DAY READMISSION AFTER SAME-DAY VERSUS NEXT-DAY DISCHARGE IN PELVIC ORGAN PROLAPSE SURGERY

A. Berger; J. Tan-Kim; S. Menefee

Urogynecology, Kaiser-San Diego, San Diego, CA.

DISCUSSANT: Charles Ascher-Walsh, MD

7:45 PM

SRG Update: Kate Meriwether, MD, Paula Doyle, MD, and Kristen Matteson, MD

7:55 PM



Video Presentation 03

SAFETY AND EFFICIENCY IN THE LAPAROSCOPIC HYSTERECTOMY: TECHNIQUES TO OPTIMIZE THE SURGICAL APPROACH.

J. Lauer; A. Advincula; J. J. Kim

Obstetrics and Gynecology, Columbia University, New York City, NY.

Thursday, July 09, 2020

8:05 PM

[Oral Poster 04](#)

NATIONAL TRENDS IN READMISSION RATES FOR SLING PROCEDURES BY HOSPITAL TYPE AND SYNTHETIC VS AUTOLOGOUS GRAFTS

[N. Ringel](#)^{1,2}; [S. E. Bradley](#)^{1,2}; [C. Iglesia](#)^{1,2}

¹Female Pelvic Medicine and Reconstructive Surgery, Medstar Washington Hospital Center, Washington, DC, ²Georgetown University School of Medicine, Washington, DC.

8:09 PM

[Oral Poster 05](#)

PERIOPERATIVE ADVERSE EVENTS IN WOMEN UNDERGOING VAGINAL PROLAPSE REPAIR WITH UTERINE PRESERVATION OR HYSTERECTOMY

[A. S. Yuan](#); [O. Chang](#); [C. Ferrando](#)

Center of Urogynecology and Pelvic Reconstructive Surgery, Cleveland Clinic, Cleveland, OH.

8:13 PM

[Oral Poster 06](#)

SUPRACERVICAL OR TOTAL HYSTERECTOMY AT THE TIME OF A LAPAROSCOPIC COLPOPEXY: NATIONAL TRENDS IN SURGICAL PRACTICE

[W. D. Winkelman](#)^{1,2,3}; [A. Modest](#)^{2,3}; [M. Richardson](#)^{2,3}

¹Department of Obstetrics and Gynecology, Mount Auburn Hospital, Cambridge, MA, ²Department of Obstetrics, Gynecology, and Reproductive Biology, Beth Israel Deaconess Medical Center, Boston, MA, ³Department of Obstetrics, Gynecology, and Reproductive Biology, Harvard Medical School, Boston, MA.

8:17 PM

Oral Poster Q & A

8:20 PM

Panel Discussion "Understanding, Managing and Benefiting from Your e-Presence"

Moderator: Patrick Culligan, MD

Panelists: Heather Schueppert, BA, Peter Lotze, MD, and Brad Bowman, MD

9:00 PM

Adjourn

9:00 PM -10:00 PM

FMIGS Young Alumni Network [JOIN](#)

FMIGS YOUNG ALUMNI NETWORK

Presents

Propelling Surgical Education Through Technology and Innovation



Cognitive Psychology Framework to Optimize Learning
Christopher C. Destephano, MD, MPH



Technology's Role in Surgical Education
Ambereen Jan, MD



A Framework for Surgical Curriculum Development
Mireille D. Truong, MD

Thursday – July 9, 2020
9:00 pm EDT

Facebook Live and Webstream Simulcast Available Online



Don't Miss Friday's Industry Sponsored Events

Advances in da Vinci Energy: Delivering Value in Women's Healthcare

Friday, July 10, 2020 4:00 PM – 4:30 PM ET *(see page 15)*

Circumferential Radial Dilation, a Novel Approach to Uterine Access in Challenging Anatomies with Definity Cervical Dilator

Friday, July 10, 2020 4:30 pm – 4:45 pm ET *(see page 15)*

Introduction to the Sonata Transcervical Fibroid Ablation System

Friday, July 10, 2020 4:45 pm – 5:00 pm ET *(see page 16)*

[REGISTER NOW](#)

Friday, July 10 Meeting Schedule



SOCIETY OF
GYNECOLOGIC SURGEONS

Friday, July 10, 2020

4:00 - 4:30

Product Theater [REGISTER NOW](#)
Advances in da Vinci Energy: Delivering Value in Women's Healthcare

4:30 - 4:45

Product Theater [REGISTER NOW](#)
Circumferential Radial Dilation, a Novel Approach to Uterine Access in Challenging Anatomies with Definity Cervical Dilator

4:45 - 5:00

Product Theater [REGISTER NOW](#)
Introduction to the Sonata Transcervical Fibroid

Ablation System

5:00 PM - 5:05 PM

Announcements
Virtual General Session

5:05 PM - 7:00 PM

Third Scientific Session
Moderator: Charles Rardin, MD
Virtual General Session

5:05 PM

Oral Presentation 08
ANCHOR VERSUS SUTURE FOR ATTACHMENT OF VAGINAL MESH IN MINIMALLY INVASIVE SACROCOLPOPEXY: A RANDOMIZED CLINICAL TRIAL
A. Berger; J. Tan-Kim; S. Menefee
Urogynecology, Kaiser-San Diego, San Diego, CA.
DISCUSSANT: Catherine Matthews, MD

5:20 PM



Oral Presentation 09

A RANDOMIZED CONTROLLED TRIAL OF CLOBETASOL PROPIONATE VERSUS FRACTIONATED CO₂ LASER FOR THE TREATMENT OF LICHEN SCLEROSUS (CURLS)

L. Burkett^{1,2}; M. Siddique^{3,2}; A. Zeymo⁴; R. E. Gutman²; A. J. Park²; C. Iglesia²

¹OB/GYN/REI, UPMC Magee-Womens, Pittsburgh, PA, ²OB/GYN and Urology, MedStar Washington Hospital Center and Georgetown University School of Medicine, Washington, DC, ³OB/GYN, Women & Infants' Hospital of Rhode Island, Providence, RI, ⁴Biostatistics, Medstar Health Research Institute (MHRI), Washington, DC.

DISCUSSANT: Cecile Ferrando, MD

5:35 PM

Video Presentation 04

A NOVEL METHOD OF VAGINAL EXTRAPERITONEAL COLPOPEXY BY SACROSPINOUS LIGAMENT FIXATION USING BIOLOGIC GRAFTS IN THE POST MESH ERA

S. Shenoy; J. N. Sosa-Stanley; T. Fan; V. Lucente
OBGYN, St Lukes University Hospital Network, Allentown, PA.

5:45 PM

Oral Presentation 10

PREOPERATIVE LEVATOR ANI MUSCLE AND PUDENDAL NERVE INJECTIONS FOR PAIN CONTROL AFTER VAGINAL RECONSTRUCTIVE SURGERY: A THREE-ARM RANDOMIZED CONTROLLED TRIAL

L. Giugale^{1,3}; L. Baranski¹; N. Schott^{2,4}; T. Emerick^{2,4}; P. Moalli^{1,3}

¹Magee-Womens Hospital of UPMC, Magee-Womens Research Institute, Pittsburgh, PA, ²Department of Anesthesiology, University of Pittsburgh School of Medicine, Pittsburgh, PA, ³Obstetrics, Gynecology and Reproductive Sciences, University of Pittsburgh School of Medicine, Pittsburgh, PA, ⁴Department of Anesthesiology, UPMC, Pittsburgh, PA.

DISCUSSANT: Sunil Balgobin, MD

Friday, July 10, 2020

6:00 PM

Oral Presentation 11

SEEDING AND GROWING RAT MESENCHYMAL STEM CELLS ON A POLYPROPYLENE MESH SCAFFOLD

K. McDonald¹; L. Frejo²; D. Shalom^{1,4}; H. Winkler^{1,4}; D. Grande^{2,3}; D. O'Shaughnessy¹

¹Urogynecology Division, Northwell Health, Great Neck, NY, ²Grande Lab, Feinstein Institute for Medical Research, Manhasset, NY, ³Orthopedics Department, Zucker School of Medicine at Hofstra/Northwell, Garden City, NY, ⁴Urogynecology, Zucker School of Medicine at Hofstra/Northwell, Garden City, NY.

DISCUSSANT: Robert Gutman, MD

6:15 PM

TeLinde Lecture: "Artificial Intelligence in Surgery"

Vicente H. Gracias, MD

Introduced by Peter L. Rosenblatt, MD

7:00 PM - 7:10 PM

Break

7:10 PM - 9:00 PM

Fourth Scientific Session

Moderator: Kris Strohbehn, MD

Virtual General Session

7:10 PM

Oral Poster 07

DEVELOPMENT OF A "SAFETY ZONE" FOR RECTUS ABDOMINIS FASCIA GRAFT HARVEST BASED ON DISSECTIONS OF THE ILIOINGUINAL AND ILIOHYPOGASTRIC NERVES

O. O. Cardenas-Trowers¹; J. Bergden²; J. T. Gaskins³; A. Gupta¹; S. L. Francis¹; N. Herring²

¹Department of Obstetrics, Gynecology, and Women's Health, Division of Female Pelvic Medicine & Reconstructive Surgery, University of Louisville, Louisville, KY, ²Department of Anatomical Sciences and Neurobiology, University of Louisville School of Medicine, Louisville, KY, ³Department of Bioinformatics and Biostatistics, University of Louisville School of Public Health and Information Sciences, Louisville, KY.

Friday, July 10, 2020

7:14 PM

Oral Poster 08

REGENERATIVE MEDICINE APPROACH TO AUGMENT SURGICAL REPAIR OF ANAL SPHINCTER INJURIES: INJECTION OF PURIFIED EXOSOME PRODUCT MAY IMPROVE ANORECTAL MANOMETRY PARAMETERS AND SPHINCTER INTEGRITY

C. K. Kisby¹; T. Rolland²; I. Shadrin³; P. Stalboerger⁴; E. Trabuco¹

¹Urogynecology, Mayo Clinic, Rochester, MN, ²Mayo Clinic, Rochester, MN, ³Internal Medicine, Mayo Clinic, Rochester, MN, ⁴Center for Regenerative Medicine, Mayo Clinic, Rochester, MN.

7:18 PM

Oral Poster 09

ADVERSE EVENTS ASSOCIATED WITH GENDER AFFIRMING VAGINOPLASTY SURGERY

C. Ferrando

Cleveland Clinic, Cleveland, OH.

7:22 PM

Oral Poster Q & A

7:25 PM

Oral Presentation 12

PELVIC ORGAN PROLAPSE SURGERY IMPROVES BIOMECHANICAL CONDITIONS AND INTERGRITY OF THE WEAK PELVIC FLOOR

H. van Raalte¹; P. Takacs²; V. Lucente³; S. Shobeiri⁴; L. Hoyte⁵; V. Egorov⁶

¹Princeton Urogynecology, Princeton, NJ, ²Eastern Virginia Medical School, Norfolk, VA, ³The Institute for Female Pelvic Medicine & Reconstructive Surgery, Allentown, PA, ⁴INOVA Women's Hospital, Falls Church, VA, ⁵The Pelvic Floor Institute, Ta, FL, ⁶Advanced Tactile Imaging, Inc., Trenton, NJ.

DISCUSSANT: Margaret Mueller, MD

7:40 PM

Video Presentation 05

RETROPERITONEAL ANATOMY AND PARAMETRIAL DISSECTION IN ROBOTIC UTERINE-ARTERY SPARING RADICAL TRACHELECTOMY

R. Delara; J. F. Magrina; P. Magtibay

Gynecology, Mayo Clinic, Phoenix, AZ.

Friday, July 10, 2020

7:50 PM

Video Presentation 06

A FOUR STEP STRATEGY FOR ROBOT-ASSISTED ABDOMINAL CERCLAGE PLACEMENT PRIOR TO PREGNANCY

A. Heiden¹; P. Katebi Kashi^{1,3}; G. S. Rose¹;
K. L. Dengler^{1,2}

¹OBGYN, Inova Fairfax Medical Center, Falls Church, VA, ²OBGYN, Walter Reed National Military Medical Center, Bethesda, MD, ³MedStar Georgetown University Hospital- Washington Hospital Center, Washington, DC.

8:00 PM

Oral Presentation 13

SEXUAL FUNCTION AFTER PELVIC ORGAN PROLAPSE SURGERY: A SYSTEMATIC REVIEW COMPARING DIFFERENT APPROACHES TO PELVIC FLOOR REPAIR

D. Antosh¹; E. Balk⁴; S. Kim-Fine⁶; K. V. Meriwether⁵;
G. Kanter⁷; A. Dieter⁸; M. Mamik⁹; M. Good¹⁰; R. Singh¹⁰;
A. Alas¹¹; M. Foda²; D. D. Rahn¹²; R. G. Rogers³

¹Obstetrics and Gynecology, Houston Methodist Hospital, Houston, TX, ²University of Central Florida College of Medicine, Starke, FL, ³University of Texas at Austin Dell Medical School, Austin, TX, ⁴Brown University School of Public Health, Providence, RI, ⁵University of New Mexico, Albuquerque, NM, ⁶University of Calgary, Calgary, Alberta, Canada, ⁷Salinas Valley Medical Clinic, Salinas, CA, ⁸University of North Carolina, Hillsborough, NC, ⁹Albert Einstein School of Medicine, New York, NY, ¹⁰University of Florida Health, Jacksonville, FL, ¹¹University of Texas San Antonio, San Antonio, TX, ¹²UT Southwestern Medical Center, Dallas, TX.

DISCUSSANT: Christine Vaccaro, DO

8:15 PM

Panel Discussion: "Work-Life Balance & Gynecologic Surgery"

Moderator: Patrick Culligan, MD

Panelists: Drs. Kristie Green, Sally Huber, Catherine Matthews and Charles Rardin

9:00 PM

Adjourn

Don't Miss Saturday's Industry Sponsored Events

Bulkamid Webinar: A New Treatment Paradigm for Patients with SUI
Saturday, July 11, 2020 9:00 am – 10:00 am ET *(see page 17)*

**Innovations on Sacrospinous Ligament Fixation,
the Benefits of Anchorsure Device**
Saturday, July 11, 2020 12:00 PM – 12:15 PM *(see page 17)*

**The FEMSelect EnPlace™: A Meshless, Limited Dissection
& Truly Minimally Invasive SSLF Option**
Saturday, July 11, 2020 12:15 pm - 12:30 pm ET *(see page 18)*

**Clinical Experience with a Robotic System
for Trans-vaginal Gynecologic Surgery***
Saturday, July 11, 2020 2:30 pm – 3:00 pm ET *(see page 19)*



Saturday, July 11 Meeting Schedule

ANNUAL SGS AWARDS CEREMONY

**Saturday, July 11
2:00 PM ET**

Don't miss out on the Prize Paper awards presentation!
Honored Mentors will be recognized.

The logo for the Society of Gynecologic Surgeons (SGS) features the letters 'SGS' in a bold, red, serif font. The letters are closely spaced and have a classic, slightly ornate appearance.

SOCIETY OF
GYNECOLOGIC SURGEONS

Saturday, July 11, 2020

- 9:00 AM - 10 AM **Product Theater** [REGISTER NOW](#)
Bulkamid Webinar: A New Treatment Paradigm for Patients with SUI
- 10:00 AM - 10:05 AM **Announcements**
Virtual General Session
- 10:05 AM - 12:00 PM **Fifth Scientific Session**
Moderator: Maggie Mueller, MD
Virtual General Session
- 10:05 AM **Oral Presentation 14**
COINCIDENTAL APPENDECTOMY IN THE SURGICAL MANAGEMENT OF WOMEN WITH ENDOMETRIOSIS AND PELVIC PAIN
W. T. Ross¹; A. Chu¹; L. Li¹; P. Keller¹; A. Kunselman^{1,2}; G. J. Harkins¹; T. Deimling¹; A. S. Benton¹
¹Department of Obstetrics and Gynecology, Penn State Health, Hershey, PA, ²Public Health Sciences, Penn State Health, Hershey, PA.
DISCUSSANT: Saifuddin Mama, MD
- 10:20 AM **Video Presentation 07**
A MINIMALLY-INVASIVE MODIFICATION FOR FASCIA LATA MID-URETHRAL SLING
K. A. Gerjevic; P. Hanissian; J. Shaw
Division of Female Pelvic Medicine and Reconstructive Surgery, Dartmouth-Hitchcock Medical Center, Lebanon, NH.
- 10:30 AM **Oral Presentation 15**
OUTCOMES OF THE DEFINING MECHANISMS OF ANTERIOR VAGINAL WALL DESCENT TRIAL
S. T. Bowen¹; P. Moalli²; S. Abramowitch¹; M. Lockhart³; L. Meyn^{4,2}; C. Nager⁵; A. G. Visco⁶; H. E. Richter⁷; C. Rardin⁸; Y. Komesu⁹; H. S. Harvie¹⁰; M. R. Paraiso¹¹; D. Mazloomdoost¹²; A. Sridhar¹³; M. G. Gantz¹³; F. PFDN¹²
¹Department of Bioengineering, University of Pittsburgh, Pittsburgh, PA, ²Department of Obstetrics, Gynecology & Reproductive Sciences, University of Pittsburgh Medical Center, Pittsburgh, PA, ³Department of Radiology,



Saturday, July 11, 2020

University of Alabama at Birmingham, Birmingham, AL, ⁴Magee-Womens Research Institute, Pittsburgh, PA, ⁵Department of Reproductive Medicine, University of California, San Diego, La Jolla, CA, ⁶Department of Obstetrics and Gynecology, Duke University Medical Center, Durham, NC, ⁷Department of Obstetrics and Gynecology, University of Alabama at Birmingham, Birmingham, AL, ⁸Brown University/Women & Infants Hospital, Providence, RI, ⁹Department of Obstetrics and Gynecology, University of New Mexico, Albuquerque, NM, ¹⁰Department of Obstetrics and Gynecology, University of Pennsylvania, Philadelphia, PA, ¹¹Cleveland Clinic, Cleveland, OH, ¹²NICHD/NIH, Rockville, MD, ¹³RTI International, PFDN, Research Triangle Park, NC.

DISCUSSANT: Vincent Lucente, MD

10:45 AM

Oral Presentation 16

BUNDLED INTERVENTIONS AND AN INSTITUTIONAL FOCUS ON INFECTION PREVENTION SIGNIFICANTLY REDUCES POST-HYSTERECTOMY INFECTIOUS MORBIDITY

S. Uppal; A. Tilea; D. Morgan; M. D. Pearlman
Obstetrics and Gynecology, University of Michigan, Ann Arbor, MI.

DISCUSSANT: Amy Park, MD

11:00 AM

Oral Presentation 17

A MULTICENTER RETROSPECTIVE COHORT COMPARING URETHRAL DIVERTICULECTOMY WITH AND WITHOUT CONCOMITANT PUBOVAGINAL SLING

S. E. Bradley¹; D. A. Leach²; J. Panza³; J. Sassani⁴; C. Escobar⁵; J. Ogorek⁶; E. Jackson⁷; P. Hudson⁸; J. J. Hamner⁹; P. E. Smith¹⁰; M. Schroeder¹¹; A. M. Wyman⁷; R. E. Gutman¹

¹Female Pelvic Medicine and Reconstructive Surgery, MedStar Washington Hospital Center/Georgetown University, Washington, DC, ²Female Pelvic Medicine and Reconstructive Surgery, Mayo Clinic, Rochester, MN, ³Obstetrics & Gynecology, Vanderbilt University Medical Center, Nashville, TN, ⁴Department of Obstetrics & Gynecology, University of Pittsburgh Medical Center,

Saturday, July 11, 2020

Pittsburgh, PA, ⁵Obstetrics & Gynecology, New York University School of Medicine, New York, NY, ⁶Obstetrics & Gynecology, Emory, Atlanta, GA, ⁷Obstetrics & Gynecology, University of South Florida, Tampa, FL, ⁸Female Pelvic Medicine & Reconstructive Surgery, Massachusetts General Hospital, Boston, MA, ⁹Female Pelvic Medicine & Reconstructive Surgery, UTSW, Dallas, TX, ¹⁰Female Pelvic Medicine & Reconstructive Surgery, The Ohio State University, Columbus, OH, ¹¹Female Pelvic Medicine & Reconstructive Surgery, Cooper, Camden, NJ.

DISCUSSANT: Danielle Patterson, MD

11:15 AM

Special Guest Lecture: "Just an Idea to Standard of Care"

Marc Beer

Introduced by Patrick Culligan, MD

12:00 PM - 12:15 PM

Product Theater [REGISTER NOW](#)

Innovations on Sacrospinous Ligament Fixation, the Benefits of Anchorsure Device

12:15 PM - 12:30 PM

Product Theater [REGISTER NOW](#)

The FEMSelect EnPlace™: A Meshless, Limited Dissection & Truly Minimally Invasive SSLF Option

12:30 PM - 2:30 PM

Sixth Scientific Session

Moderators: Patrick Culligan MD

and Peter Rosenblatt, MD

Virtual General Session

12:30 PM

Video Presentation 08

CIRCUMFERENTIAL URETHRAL DIVERTICULUM: A SURGICAL CONUNDRUM

[S. Mehta](#); C. H. Suh; O. Harmanli

Obstetrics and Gynecology, Yale University School of Medicine, New Haven, CT.

12:40 PM

Oral Poster 10

QUALITY OF SEXUAL FUNCTION OUTCOME REPORTING IN PELVIC ORGAN PROLAPSE TRIALS

D. Antosh¹; K. V. Meriwether²; S. Kim-Fine³; E. Balk⁴; A. Dieter⁵; G. Kanter⁶; M. Mamik⁷; R. Singh⁸; M. Good⁸; A. Alas⁹; M. Foda¹⁰; D. D. Rahn¹¹; R. G. Rogers¹²

¹Obstetrics and Gynecology, Houston Methodist Hospital, Houston, TX, ²University of New Mexico, Albuquerque, NM, ³University of Calgary, Calgary, Alberta, Canada, ⁴Brown University School of Public Health, Providence, RI, ⁵University of North Carolina, Hillsborough, NC, ⁶Salinas Valley Medical Clinic, Salinas, CA, ⁷Albert Einstein College of Medicine, New York, NY, ⁸University of Florida Health, Jacksonville, FL, ⁹University of Texas San Antonio, San Antonio, TX, ¹⁰University of Central Florida College of Medicine, Starke, FL, ¹¹UT Southwestern Medical Center, Dallas, TX, ¹²University of Texas at Austin Dell Medical School, Austin, TX.

12:44 PM

Oral Poster 11

DEVELOPS: DESCRIPTION OF VAGINAL LAXITY AND PROLAPSE AND CORRELATION WITH SEXUAL FUNCTION

A. Polland²; J. J. Fitzgerald¹; A. Iwamoto³; R. L. Furuya⁴; V. Duong¹; S. E. Bradley¹; H. Wang⁵; C. Iglesia¹

¹Gynecology and Obstetrics, Georgetown School of Medicine/MedStar Health, Washington, DC, ²Urology, Maimonides Medical Center/ Zucker School of Medicine at Hofstra/Northwell, Brooklyn, NY, ³Georgetown University School of Medicine, Washington, DC, ⁴The Donald and Barbara Zucker School of Medicine at Hofstra/Northwell, Brooklyn, NY, ⁵MedStar Health Research Institute, Hyattsville, MD.

Saturday, July 11, 2020

12:48 PM

Oral Poster 12

VAGINAL ELECTRICAL STIMULATION FOR POSTPARTUM NEUROMUSCULAR RECOVERY: THE VESPR STUDY

O. Brown¹; B. Dave²; J. Geynisman¹; K. Warner¹; A. W. Gillingham¹; K. Kenton¹; M. G. Mueller¹; S. A. Collins¹; C. Lewicky-Gaupp¹

¹Obstetrics and Gynecology, Northwestern University Feinberg School of Medicine, Chicago, IL, ²Obstetrics and Gynecology, University of California, Irvine, Orange, CA.

12:51 PM

Oral Poster Q & A

12:55 PM

Presidential Address

Peter L. Rosenblatt, MD
Introduced by Rajiv Gala, MD

1:30 PM

Video Presentation 09

CONSIDERATIONS FOR THE SURGICAL MANAGEMENT OF DIAPHRAGMATIC ENDOMETRIOSIS.

M. Luna Russo¹; M. Dassel¹; D. Raymond²; E. Richards³; T. Falcone³; C. King¹

¹Obstetrics and Gynecology, Minimally Invasive Gynecologic Surgery, Cleveland Clinic, Cleveland, OH, ²Thoracic and Cardiovascular Surgery, Cleveland Clinic, Cleveland, OH, ³Obstetrics and Gynecology, Reproductive Endocrinology & Infertility, Cleveland Clinic, Cleveland, OH.

1:40 PM

Video Presentation 10

COMPLETE PELVIC PERITONECTOMY

M. Misal; R. Delara; M. Wasson
Department of Gynecologic surgery, Mayo Clinic Arizona, Phoenix, AZ.

Saturday, July 11, 2020

- 1:50 PM **Video Presentation 11**
**FUNDAMENTALS OF LAPAROSCOPIC SURGERY (FLS)
MANUAL SKILLS EXAM: TIPS AND TRICKS**
Y. B. Chen¹; A. Chen²; T. T. Pham¹
¹Female Pelvic Medicine and Reconstructive Surgery,
Departments of Obstetrics/Gynecology and Urology,
Loyola University Medical Center, Maywood, IL, ²Loyola
University Chicago Stritch School of Medicine,
Maywood, IL.
- 2:00 PM **Awards Ceremony**
- 2:30 PM - 3:00 PM **Product Theater** [REGISTER NOW](#)
**Clinical Experience with a Robotic System for
Trans-vaginal Gynecologic Surgery***
- 3:00 PM - 4:45 PM **Seventh Scientific Session**
Moderator: Miles Murphy, MD
Virtual General Session
- 3:00 PM **Video Presentation 12**
**OUTSIDE-IN: INTRAPERITONEAL ANTERIOR
AND POSTERIOR PLICATION DURING PROLAPSE
SURGERY**
A. DiCarlo-Meacham¹; K. L. Dengler¹; N. Horbach²;
J. Welgoss²; W. Von Pechmann²; D. D. Gruber¹
¹Walter Reed National Military Medical Center,
Bethesda, MD, ²INOVA Fairfax, Falls Church, VA.
- 3:10 PM **Video Presentation 13**
**THE ART OF PERITONEAL CLOSURE DURING
SACROCOLPOPEXY**
A. M. Artsen; A. Stork; H. Zyczynski
Obstetrics and Gynecology, University of Pittsburgh
Medical Center, Pittsburgh, PA.
- 3:20 PM **FPRN* Update: Kate Meriwether, MD, Nancy Ringel,
MD, and Whitney Ross, MD**
- 3:30 PM **Pelvic Anatomy Group Update: Donna Mazloomdoost,
MD, Anne Sammarco, MD, and Annetta Madsen, MD**

3:40 PM

[Oral Poster 13](#)

ROUTE OF HYSTERECTOMY AND MESH ATTACHMENT AT THE TIME OF MINIMALLY INVASIVE SACROCOLPOPEXY: A RETROSPECTIVE MULTICENTER COHORT COMPARISON.

[J. Ton](#)¹; [X. Jia](#)²; [A. Gupta](#)³; [D. Maheshwari](#)⁴; [M. Schroeder](#)⁵; [A. Small Layne](#)⁶; [V. O. Demtchouk](#)⁷
¹Anne Arundel Medical Center, Annapolis, MD, ²Christiana Care, Newark, DE, ³University of Louisville, Louisville, KY, ⁴UMass Baystate, Springfield, MA, ⁵Cooper University, Camden, NJ, ⁶Midatlantic Permanente Group, Largo, MD, ⁷Mount Auburn Hospital, Cambridge, MA.

3:44 PM

[Oral Poster 14](#)

VOIDING ASSESSMENT BASED ON MINIMUM SPONTANEOUS VOID OF 150 ML COMPARED TO RETROGRADE FILL METHOD AFTER FEMALE PELVIC FLOOR PROCEDURES: A RANDOMIZED CONTROLLED TRIAL

[P. Popiel](#); [O. Harmanli](#); [F. Getaneh](#); [X. Xu](#); [J. Yeh](#); [L. Rickey](#)
Yale-New Haven Hospital, New Haven, CT.

3:48 PM

[Oral Poster 15](#)

NATIONAL TRENDS IN THE SURGICAL APPROACH TO AN ABDOMINAL COLPOPEXY WITH A CONCURRENT HYSTERECTOMY

[W. D. Winkelman](#)^{1,2,3}; [A. Modest](#)^{2,3}; [M. Richardson](#)^{2,3}
¹Department of Obstetrics and Gynecology, Mount Auburn Hospital, Cambridge, MA, ²Department of Obstetrics and Gynecology, Beth Israel Deaconess Medical Center, Boston, MA, ³Department of Obstetrics, Gynecology, and Reproductive Biology, Harvard Medical School, Boston, MA.

3:52 PM

Oral Poster Q & A

Saturday, July 11, 2020

3:55 PM

Video Presentation 14
VAGINAL SURGERY: DON'T GET BENT OUT OF SHAPE

K. Woodburn¹; R. Kho²

¹National Center for Advanced Pelvic Surgery, MedStar Health, Washington, DC, ²Women's Health Institute, Cleveland Clinic, Cleveland, OH.

4:05 PM

Video Presentation 15
MASQUERADE BULGE: APPROACH TO THE LARGE VAGINAL MASS

C. Kieserman-Shmokler; S. Uppal; J. O. DeLancey
Obstetrics and Gynecology, University of Michigan, Ann Arbor, MI.

4:15 PM

Oral Poster 16
THE DOUBLE-HUMP: CLINICAL SIGNIFICANCE IN SACROCOLPOPEXY

M. Good¹; D. Rao²; C. Evans¹; C. Smotherman³; R. Singh¹

¹Obstetrics and Gynecology, University of Florida, Jacksonville, FL, ²Radiology, University of Florida College of Medicine, Jacksonville, FL, ³Center for Health Equity and Quality Research, University of Florida College of Medicine, Jacksonville, FL.

4:19 PM

Oral Poster 16A
PERFORMANCE, ACCEPTABILITY, AND VALIDATION OF A PHONE APPLICATION BOWEL DIARY

H. Zyczynski^{1,2}; H. E. Richter³; E. Lukacz⁴; V. Sung⁵; L. A. Arya⁶; D. D. Rahn⁷; A. G. Visco⁸; B. Carper¹⁰; D. Mazloomdoost⁹; M. G. Gantz¹⁰

¹University of Pittsburgh, Pittsburgh, PA, ²Magee-Womens Research Institute, Pittsburgh, PA, ³University of Alabama Birmingham, Birmingham, AL, ⁴University of California San Diego, San Diego, CA, ⁵Brown University, Providence, RI, ⁶University of Pennsylvania, Philadelphia, PA, ⁷University of Texas Southwestern, Dallas, TX, ⁸Duke, Durham, NC, ⁹Eunice Kennedy Shriver National Institute of Child Health and Human Development, Bethesda, MD, ¹⁰Research Triangle International, Research Triangle Park, NC.

Saturday, July 11, 2020

4:23 PM

[Oral Poster 17](#)

RANDOMIZED TRIAL OF EARLY VERSUS LATER VOID TRIALS FOR WOMEN WITH IMMEDIATE URINARY RETENTION AFTER RECONSTRUCTIVE VAGINAL SURGERY FOR MULTICOMPARTMENT PROLAPSE

[J. Schachar](#)¹; [D. Ossin](#)²; [E. Hurtado](#)²; [C. Parker-Autry](#)¹; [G. Badlani](#)¹; [W. Davila](#)²; [C. A. Matthews](#)¹

¹Wake Forest Baptist Health, Hollywood, FL,

²Cleveland Clinic Florida, Weston, FL.

4:27 PM

[Oral Poster 18](#)

ADHERENCE TO RECOMMENDED PRACTICES WHEN PERFORMING A RISK-REDUCING BILATERAL SALPINGO-OOPHORECTOMY

[L. K. Newcomb](#); [C. Toal](#); [N. Rindos](#); [S. Mansuria](#)

Minimally Invasive Gynecologic Surgery, University of Pittsburgh Medical Center, Pittsburgh, PA.

4:31 PM

Oral Poster Q & A

4:35 PM

Passing of the Gavel - Peter Rosenblatt, MD and Miles Murphy, MD

4:40 PM

President's Message Miles Murphy, MD

4:45 PM

Adjourn

4:45 PM – 7:30 PM

FPRN® Meeting [REGISTER NOW](#)

Multidisciplinary Group of FPRN® break out room

[REGISTER NOW FOR BREAK OUT ROOM](#)

4:45 PM - 6:39 PM

VideoFest

Moderator: [Gerald Taylor, MD](#)

Virtual General Session

4:45 PM

Videofest 16

INDICATIONS AND TECHNIQUE FOR CADAVERIC FASCIA LATA PUBOVAGINAL SLING

[M. L. Hoover](#)¹; [M. Karram](#)¹; [G. Farley](#)²

¹Urogynecology, The Christ Hospital, Cincinnati,

OH, ²University of Louisville, Louisville, KY.

Saturday, July 11, 2020

4:52 PM

Videofest 18

A NOVEL, MESHLESS METHOD OF VAGINAL COLPOPEXY BY SACROSPINOUS LIGAMENT FIXATION USING THE ENPLACE SYSTEM TO TREAT PELVIC ORGAN PROLAPSE

S. Shenoy¹; J. N. Sosa-Stanley¹; T. Fan¹; V. Lucente²,¹

¹Minimally Invasive Gynecologic Surgery, St. Luke's University Health Network, Allentown, PA, ²Urogynecology, The Institute for Female Pelvic Medicine, Allentown, PA.

4:59 PM

Videofest Q & A

5:04 PM

Videofest 19

MODIFIED MANCHESTER-FOTHERGILL PROCEDURE FOR PELVIC ORGAN PROLAPSE IN A PATIENT WITH SPINA BIFIDA

E. C. Rutledge; S. Pai; T. Muir; D. Antosh

Urogynecology, Houston Methodist Hospital, Houston, TX.

5:11 PM

Videofest 20

RESECTION OF CYSTIC ADENOMYOSIS

J. Gisseman; C. Ramirez; T. Baker

Obstetrics and Gynecology, San Antonio Military Medical Center, San Antonio, TX.

5:18 PM

Videofest 21

A POSTERIOR UTEROPERITONEAL FISTULA: AN UNEXPECTED FINDING

K. L. Dengler^{1,2}; P. Katebi Kashi²; A. DiCarlo-Meacham^{1,2}; G. S. Rose²

¹OB/GYN, Walter Reed National Military Medical Center, Bethesda, MD, ²OB/GYN, INOVA Fairfax Hospital, Annandale, VA.

5:25 PM

Videofest Q & A

Saturday, July 11, 2020

5:29 PM



Videofest 22

CREATION OF A SURGICAL SKILLS TEACHING MODEL FOR ANTERIOR AND POSTERIOR COLPORRHAPHY

S. Lenger; B. Liang; J. Lowder; E. Strand; C. Chu
Washington University in St. Louis, St. Louis, MO.
Presented by Dr. [Jenna Warehime](#)

5:36 PM

Videofest 23

HOW TO: SALVAGE AN AIR KNOT

[A. Zelvianskaia](#)¹; N. Hazen^{2,1}; E. Brunn^{2,1}; J. Robinson^{2,1};
V. Morozov^{2,1}

¹OBGYN, MedStar Washington Hospital Center, Washington, DC, ²National Center for Advanced Pelvic Surgery, MedStar Washington Hospital Center, Washington, DC.

5:41 PM

Videofest 24

URETERAL ANATOMY FOR THE JUNIOR LEARNER

J. Sisto²; [N. Garg](#)³; E. Stockwell¹; M. Gutierrez⁴

¹MIS, LVMIS, Las Vegas, NV, ²Vermont Gynecology, Burlington, VT, ³Obstetrics & Gynecology, UC Irvine, Orange, CA, ⁴BH OBGYN, Beverly Hills, CA.

5:46 PM

Videofest Q & A

5:50 PM

Videofest 25

INDOCYANINE GREEN DYE FOR INTRAOPERATIVE ASSESSMENT OF OVARIAN PERFUSION: A FEASIBILITY STUDY

[J. Traylor](#); S. Whalen; M. Milad

Obstetrics & Gynecology, Northwestern University Feinberg School of Medicine, Chicago, IL.

5:56 PM

Videofest 26

UTILIZATION OF INDOCYANINE GREEN FOR URETERAL IDENTIFICATION WITH ROBOTIC FIREFLY FLUORESCENCE IMAGING

[M. G. Mueller](#)³; A. Abdeen¹; K. Kenton³; P. Culligan⁴;
D. Glazier^{1,2}

¹Virginia Urology for Women, Midlothian, VA, ²Johnson Willis Hospital, Richmond, VA, ³Northwestern University Feinberg School of Medicine, Chicago, IL, ⁴Weill Cornell Medicine, New York, NY.

Saturday, July 11, 2020

6:03 PM

Videofest 27

SURGICAL TECHNIQUE FOR COMBINED ROBOTIC SUPRACERVICAL HYSTERECTOMY WITH SACROCOLPOPEXY AND VENTRAL MESH RECTOPEXY

M. M. Rieger¹; M. Tomassi²; D. Klaristenfeld²;
S. Menefee³; J. Tan-Kim³

¹Female Pelvic Medicine and Reconstructive Surgery, Kaiser Permanente San Diego/UC San Diego, La Jolla, CA, ²Colorectal Surgery, Kaiser Permanente San Diego, San Diego, CA, ³Female Pelvic Medicine and Reconstructive Surgery, Kaiser Permanente San Diego, San Diego, CA.

6:10 PM

Videofest Q & A

6:14 PM

Videofest 28

VAGINAL ATTACHMENT OF MESH FOR SACROCOLPOPEXY AT THE TIME OF HYSTERECTOMY

J. Heft; E. E. Weber LeBrun

University of Florida, Gainesville, FL.

6:21 PM

Videofest 29

MINIMALLY INVASIVE SURGICAL MANAGEMENT OF LUMBOSACRAL DISCITIS FOLLOWING SACROCOLPOPEXY: TREATMENT AND PREVENTION

J. Davitt; J. Yi

Medical and Surgical Gynecology, Mayo Clinic Arizona, Phoenix, AZ.

6:28 PM

Videofest 30

REMOVING INFECTED SACROCOLPOPEXY MESH: TIPS AND TRICKS ABOUT AVOIDING URETERAL AND BOWEL COMPLICATIONS

M. G. Mueller²; A. Abdeen¹; K. Kenton²; P. Culligan⁴;
D. Glazier^{1,3}

¹Virginia Urology for Women, Midlothian, VA, ²Northwestern University Feinberg School of Medicine, Chicago, IL, ³Johnson Willis Hospital, Richmond, VA, ⁴Weill Cornell Medicine, New York, NY.

6:35 PM

Videofest Q & A

Don't Miss Sunday's Industry Sponsored Event

Hemostasis in Gynecologic Surgery

Sunday, July 12 9:00 am – 9:45 am ET *(see page 20)*

Monitoring Quality Improvement is the Path Forward: A Discussion with Charley Rardin

Sunday, July 12, 2020 9:45 am – 10:00 am ET *(see page 20)*

BOTOX® for OAB*: Your Role in Supporting the Patient Journey

Sunday, July 12, 2020 2:00 pm – 3:00 pm ET *(see page 21)*

[REGISTER NOW](#)

Sunday, July 12 Meeting Schedule

Sunday, July 12, 2020

- 9:00 AM – 9:45 AM **Product Theater** [REGISTER NOW](#)
Hemostasis in Gynecologic Surgery
- 9:45 AM - 10:00 AM **Product Theater** [REGISTER NOW](#)
**Monitoring Quality Improvement is the Path Forward:
A Discussion with Charley Rardin**
- 2:00 PM - 3:00 PM **Product Theater** [REGISTER NOW](#)
**BOTOX® for OAB*: Your Role in
Supporting the Patient Journey**

Post Graduate Courses

• Add a PG Course to Your Registration •

- 10:00 AM - 2:00 PM **“Enhanced Recovery After Surgery:
Overcoming Barriers to Implementation”**
Course Chair: Mikio Nihira, MD
- “It’s All About the Apex – The Key
to Successful POP Surgery”**
Course Director: Charles Hanes, MD
- 3:00 PM - 7:00 PM **“Total Laparoscopic Hysterectomy:
Pushing the Envelope”**
Course Chair: Cara King, DO
- “Transvaginal Reconstructive Pelvic Surgery
Using Graft Augmentation Post FDA”**
Course Director: Vincent R. Lucente, MD

Video Café

Videos are available throughout the meeting
Click [HERE](#) to view all 2020 Video Café and
Past Year SGS Videos in the SGS Video Library

Video Café 31

ROBOTIC-ASSISTED RESECTION OF A 10 CM RETROPERITONEAL PELVIC GANGLIONEUROMA

[P. Katebi Kashi](#)¹; K. P. Zeligs¹; J. Vaz¹; R. Garg^{2,1}

¹Division of Gynecologic Oncology, Dept of Ob/Gyn, Inova Women's Hospital, Falls Church, VA, ²Mid Atlantic Gynecology Oncology & Pelvic Surgery Associate, Fairfax, VA.

Video Café 32

LAPAROSCOPIC MANAGEMENT OF A CORNUAL ECTOPIC PREGNANCY

[C. Lam](#)¹; S. Plosker²; A. Imudia¹

¹Obstetrics and Gynecology, University of South Florida, Tampa, FL, ²Shady Grove Fertility, Tampa, FL.

Video Café 33

LOCALIZATION OF THE MIDURETHRA DURING MIDURETHRAL SLING PLACEMENT

[H. Barnes](#); Y. B. Chen; E. R. Mueller

Female Pelvic Medicine and Reconstructive Surgery, Loyola University Medical Center, Oak Park, IL.

Video Café 34

3 PORT LAPAROSCOPIC SUPRACERVICAL HYSTERECTOMY WITHOUT UTERINE MANIPULATOR USING HARMONIC ACE+ 7 DEVICE.

[T. Mupombwa](#)

Gynecology, Virginia Mason Medical Center, Seattle, WA.

Video Café 35

MANAGEMENT OF NERVE ENTRAPMENT AFTER ROBOTIC URETERAL REIMPLANTATION WITH PSOAS STITCH

[B. Roberts](#)¹; E. Salom²

¹ob gyn, USF, Tampa, FL, ²ob gyn, FIU, Miami, FL.

Video Café 36

DIFFERENT TECHNIQUES FOR DISSECTING AN ADNEXAL MASS

[C. Rodriguez-Valero](#)

OBGYN, TECNOLOGICO DE MONTERREY, Monterrey, MTY, Mexico.

Video Café 37

ROLE OF MATERNAL LAPAROSCOPY IN FETAL SURGERY

B. Willborg; [A. Cope](#); T. Burnett; R. Ruano OBGYN, Mayo Clinic, Rochester, MN.

Video Café

Video Café 38

YOUR LEFT HAND IS YOUR RIGHT HAND'S BEST ASSISTANT: HOW TO BECOME A TWO- HANDED SURGEON

L. K. Newcomb; S. Mansuria

Minimally Invasive Gynecologic Surgery, University of Pittsburgh Medical Center, Pittsburgh, PA.

Video Café 39

REPAIR OF MIDDLE TO DISTAL URETERAL INJURIES IN UROLOGIC AND GYNECOLOGIC SURGERIES

O. O. Cardenas-Trowers¹; T. Fitzgibbon²; A. Gupta¹; S. L. Francis¹; M. Ankem²

¹University of Louisville, Department of Obstetrics, Gynecology, and Women's Health, Division of Female Pelvic Medicine & Reconstructive Surgery, University of Louisville, Louisville, KY, ²University of Louisville, Department of Urology, University of Louisville, Louisville, KY.

Video Café 40 – WITHDRAWN

Video Café 41

SLING PLICATION FOR PERSISTENT STRESS URINARY INCONTINENCE AFTER MIDURETHRAL SLING

C. H. Suh; L. Rickey; R. Bercik; O. Harmanli Yale School of Medicine, New Haven, CT.

Video Café 42

REMOVAL OF SPECIMEN VIA MINI-UMBILICAL INCISION DURING LAPAROSCOPIC PROLAPSE REPAIRS

W. Chong^{1,2}

¹Inspira Health, Vineland/Mullica Hill, NJ, ²Icahn School of Medicine at Mount Sinai, New York, NY.

Video Café 43

REMOVAL OF SPECIMEN VIA POSTERIOR COLPOTOMY DURING (ROBOTIC-ASSISTED) LAPAROSCOPIC PROLAPSE REPAIRS

W. Chong^{1,2}

¹Inspira Health, Vineland/Mullica Hill, NJ, ²Icahn School of Medicine at Mount Sinai, New York, NY.

Video Café 44

VAGINAL CYST PRESENTING AS PELVIC ORGAN PROLAPSE

A. R. Carrubba; M. G. Leon; A. Chen

Division of Gynecologic Surgery, Mayo Clinic, Jacksonville, FL.

Video Café 45

ROTCULATING KNOT TYING TECHNIQUE FOR LAPAROSCOPIC SURGERY

A. A. Adajar^{1,2}

¹Obstetrics and Gynecology, Illinois Institute of Gynecology & Advance Pelvic Surgery, Chicago, IL, 2MIGS101, Chicago, IL.

Video Café

Video Café 46

TRANSPERINEAL HYSTERECTOMY: A NOVEL APPROACH

K. Menhajji¹; B. Gaigbe-Togbe¹; P. Sylla²; A. d. Garely¹

¹Obstetrics and Gynecology, Mount Sinai Hospital, New York, NY, ²Colon & Rectal Surgery, Mount Sinai Hospital, New York, NY.

Video Café 47

PELVIC CONGESTION SYNDROME A LAPAROSCOPIC APPROACH

C. Barake¹; N. S. Moawad²

¹OBGYN, American University of Beirut Medical Center, Beirut, Lebanon,

²University of Florida, Gainesville, FL.

Video Café 48 – WITHDRAWN

Video Café 49

MODIFIED COLPOCLEISIS FOR VAGINAL HERNIATION AFTER ANTERIOR EXENTERATION

S. Mehta; C. Arkfeld; O. Harmanli

Obstetrics and Gynecology, Division of Urogynecology, Yale University School of Medicine, New Haven, CT.

Video Café 50

HOW TO COMPLETE A VOIDING DIARY: A PATIENT EDUCATION VIDEO

S. Mehta; S. Dalal; O. Harmanli

Obstetrics and Gynecology, Yale University School of Medicine, New Haven, CT.

Video Café 51

ULTRASOUND-GUIDED HYSTEROSCOPY

J. Guner¹; L. Ghidei¹; R. Howard³; P. Zarutskie¹; J. Appleton²; V. George²; A. Schutt¹

¹Obstetrics and Gynecology, Baylor College of Medicine, Houston, TX,

²Radiology, Texas Childrens Hospital, Houston, TX, ³Obstetrics and Gynecology, Texas Childrens Hospital, Houston, TX.

Video Café 52

MANAGEMENT OF THE SUBURETHRAL MASS IN THE POSTOPERATIVE TRANSGENDER WOMAN

O. H. Chang; C. A. Ferrando

Female Pelvic Medicine and Reconstructive Surgery, Cleveland Clinic Foundation, Cleveland, OH.

Video Café 53

OPERATE LIKE A PRO: AN EXPERT GUIDE TO TVH

J. J. Fitzgerald; E. Hoang; A. I. Sokol; A. J. Park

Gynecology and Obstetrics, Georgetown School of Medicine/MedStar Health, Washington, DC.

Video Café

Video Café 54

USING THE APPLICATION EXPLAIN EVERYTHING™ TO CREATE A PATIENT EDUCATIONAL VIDEO

S. E. Jeney; V. Ihara; B. D. Heliker Ob/Gyn, UC Irvine, Orange, CA.

Video Café 55

A PRE-SACRAL CYST: DISSECTION IN THE RETRO-RECTAL SPACE

A. R. Carrubba; M. G. Leon; A. Chen; P. Pettit; C. C. DeStephano Division of Gynecologic Surgery, Mayo Clinic, Jacksonville, FL.

Video Café 56

USE OF RESECTOSCOPE TO REMOVE FRACTURED INTRAUTERINE DEVICE (IUD)

S. Miles¹; D. Chan²; R. Guido¹

¹Minimally Invasive Gynecologic Surgery, Magee Womens Hospital, Pittsburgh, PA, ²Gynecologic Oncology, Magee Womens Hospital, Pittsburgh, PA.

Video Café 57

TIPS AND TRICKS: A NEW APPROACH TO COINCIDENTAL APPENDECTOMY: THE VAGINAL APPENDECTOMY (VAGAPPY)

W. T. Ross; G. J. Harkins; A. S. Benton; T. Deimling

Department of Obstetrics and Gynecology, Penn State Health, Hershey, PA.

Video Café 58

VAGINAL HYSTERECTOMY 101: A STEP-BY-STEP GUIDE FOR LEARNERS EMPHASIZING SURGICAL ANATOMY

E. Lee¹; T. Sachs²; M. Anand¹

¹Obstetrics & Gynecology, Boston University School of Medicine, Boston Medical Center, Boston, MA, ²Surgical Oncology, Boston University School of Medicine, Boston Medical Center, Boston, MA.

Video Café 59

A CASE SERIES OF SURGICAL RECONSTRUCTION IN PATIENTS WITH FEMALE GENITAL MUTILATION/CUTTING UTILIZING 3D ULTRASOUND

E. Welch¹; J. Alshiek³; A. S. Shobeiri²

¹Urogynecology, Walter Reed National Military Medical Center, Bethesda, MD, ²Department of Obstetrics & Gynecology, INOVA Women's Hospital, Falls Church, VA, ³Hillel Yafe Hospital, Hadera, Israel.

Video Café 60

USING IPAD BASED INTERACTIVE WHITE BOARD APP TO CREATE ANNOTATED SURGICAL VIDEOS FOR TRAINING PURPOSES

S. Uppal; L. Burns; D. Marzano

Obstetrics and Gynecology, University of Michigan, Ann Arbor, MI.

Video Café

Video Café 61

COMPLEX LABIOPLASTY IN PATIENT WITH CONGENITAL PRIMARY LYMPHEDEMA

S. Spector; S. T. Mama

Ob/GYN, Cooper Medical School of Rowan University, Voorhees, NJ.

Video Café 62

HIGH POSTERIOR WALL DEFECTS: A LAPAROSCOPIC APPROACH

J. Heusinkveld^{1,2}; a. lakhanpal^{1,2}

¹OB/GYN, University of Arizona, Tucson, AZ, ²Banner Health, Tucson, AZ.

Video Café 63

HIGH POSTERIOR DEFECTS: A VAGINAL APPROACH

J. Heusinkveld^{1,2}; a. lakhanpal^{1,2}

¹OB/GYN, University of Arizona, Tucson, AZ, ²Banner Health, Tucson, AZ.

Video Café 64

GYNECOLOGIC LAPAROSCOPIC SURGICAL TRAINING IN RURAL GUATEMALA: A VIDEO TO HELP TRAIN LOCAL STAFF IN LAPAROSCOPIC EQUIPMENT AND OPERATING ROOM SET UP.

E. S. Han¹; A. Dinsmore²; J. Kim¹; D. Deitsch²; A. P. Advincula^{1,2}

¹OB/Gyn, Columbia University, New York, NY, ²Mary & Michael Jaharis Simulation Center, Columbia University College of Physicians and Surgeons, New York, NY.

Video Café 65

ROBOTIC ASSISTED APPROACH TO BURCH URETHROPEXY

R. E. Stepanek¹; G. Kilic²; T. Lee²

¹School of Medicine, University of Texas Medical Branch, Galveston, TX,

²Obstetrics & Gynecology, University of Texas Medical Branch, Galveston, TX.

Video Café 66

LAPAROSCOPIC URETERONEOCYSTOSTOMY

E. Brunn; K. Woodburn; J. Robinson; L. A. Richter Urogynecology, Washington Hospital Center, Arlington, VA.

Video Café 67

REPAIR OF A COMPLEX RECTOVAGINAL FISTULA

I. Addis^{1,2}; J. Heusinkveld^{1,2}

¹OB/GYN, University of Arizona, Tucson, AZ, ²Banner Health, Tucson, AZ.

Video Café 68

ROBOTIC RESECTION AND REVISION OF UTERINE SCAR DEFECT WITH HYSTEROSCOPIC GUIDANCE

C. Savilo; R. B. Smith; J. Mourad

Minimally Invasive Gynecologic Surgery, University of Arizona College of Medicine Phoenix, Phoenix, AZ.

Video Café

Video Café 69

INCORPORATING TRANSVAGINAL LAPAROSCOPY (VNOTES) INTO YOUR SURGICAL PRACTICE

L. D. Kammire

Ob-Gyn, Wake Forest School of Medicine, Winston Salem, NC.

Video Café 70

VNOTES (VAGINAL LAPAROSCOPY) CASE PRESENTATION: OVARIAN DETORSION, DRAINAGE OF HEMORRHAGIC CYST AND BILATERAL SALPINGECTOMY IN A PATIENT WITH MULTIPLE PRIOR ABDOMINAL SURGERIES

L. D. Kammire

Ob-Gyn, Wake Forest School of Medicine, Winston Salem, NC.

Video Café 71

ROBOTIC COLOSTOMY TAKE-DOWN

W. K. Khadraoui

OB/GYN, YNNH Bridgeport Hospital, Bridgeport, CT.

Video Café 72

LIVER LACERATION WITH PALMER'S POINT ENTRY IN THE SUPER OBESE PATIENT

A. Stone; J. Mourad

MIGS, Banner University Medical Center, Phoenix, AZ.

Video Café 73

LAPAROSCOPIC UTEROSACRAL LIGAMENT SUSPENSION TASK TRAINER

M. Youngstrom; N. Metcalfe; K. Falk; J. Ogorek; E. Chahine Gynecology and Obstetrics, Emory University, Atlanta, GA.

Video Café 74

UTILIZING THE POSTERIOR VAGINAL FORNIX FOR PRIMARY LAPAROSCOPIC ACCESS

A. A. Adajar^{1,2}

¹Obstetrics and Gynecology, Illinois Institute of Gynecology & Advance Pelvic Surgery, Chicago, IL, ²MIGS101, Chicago, IL.

Video Café 75

SURGICAL CORRECTION OF OBSTRUCTED DEFECATION SYNDROME

T. Cui; C. A. Matthews

Urology, Wake Forest School of Medicine, Winston Salem, NC.

Video Café 76

ROBOTIC MYOMECTOMY WITH INTRAOPERATIVE ULTRASOUND GUIDANCE

M. Guirguis¹; J. Alshiek²; A. S. Shobeiri¹

¹Inova Fairfax Hospital, Falls Church, VA, ²Hillel Yafe Hospital, Hadera, Israel.

Video Café

Video Café 77

TIPS AND TRICKS: PRESACRAL NEURECTOMY

H. Chapman²; A. McHenry²; M. Hibner²; K. M. de Souza¹

¹Gynecology, Pennsylvania State University School of Medicine, Hershey, PA,

²Obstetrics/Gynecology, Creighton University School of Medicine, Phoenix, AZ.

Video Café 78

A NOVEL ROBOTIC ENDOSCOPIC DEVICE USED FOR OPERATIVE HYSTEROSCOPY: RETAINED IUD

L. Harvey¹; R. Hendrick²; N. Dillon³; E. Blum³; L. Branscombe³; S. Webster²; T. Anderson¹

¹Obstetrics and Gynecology, Vanderbilt University Medical Center, Nashville, TN,

²Vanderbilt University, Nashville, TN, ³Virtuoso Surgical, Nashville, TN.

Video Café 79

AVOIDING OOPHORECTOMY IN ACUTE OVARIAN TORSION

M. G. Leon; A. R. Carrubba; M. Robertson; T. A. Dinh Surgical Gynecology, Mayo Clinic, Jacksonville, FL.

Video Café 80

INTRAOPERATIVE SUPRAPUBIC CYSTOSCOPY

J. Gonzalez^{1,3}; F. Gonzales²; K. Lund¹; T. Muffly³

¹Obstetrics and Gynecology, University of Colorado, Denver, CO, ²Surgery, University of Colorado, Denver, CO, ³Obstetrics and Gynecology, Denver Health and Hospital Authority, Denver, CO.

Video Café 81

HYSTEROSCOPIC UTERINE ARTERY LACERATION IN SETTING OF CERVICAL STENOSIS: A CASE STUDY

O. Borodulin¹; A. A. Adajar²

¹University of Nevada Las Vegas, Las Vegas, NV, ²Illinois Institute of Gynecology and Advanced Pelvic Surgery, Chicago, IL.

Video Café 82

10 STEPS TO A SUCCESSFUL LAPAROSCOPIC MYOMECTOMY

A. Quevedo

Obstetrics and Gynecology, St Joseph Hospital, Eureka, CA.

Video Café 83

TECHNIQUE FOR RETROGRADE ROBOTIC HYSTERECTOMY FOR MANAGEMENT OF DENSE BLADDER ADHESIONS.

F. Getaneh; L. Mutlu; F. Seifi

Yale New Haven Hospital, New Haven, CT.

Non-Oral Posters

Click on hyperlinked ID numbers to view posters. Please address any questions you may have with the poster directly to the presenting author.

Click [HERE](#) for a list of the contact information of presenting authors for both Oral Posters and Non-Oral Posters.

[Non-Oral Poster 19](#)

VAGINAL INTRAPERITONEAL VS. EXTRAPERITONEAL UTEROSACRAL LIGAMENT VAULT SUSPENSIONS: A COMPARISON OF A STANDARD AND NOVEL APPROACH

D. Mounir; N. O. Vasquez-Tran; D. Antosh; T. Muir

Female Pelvic Medicine & Reconstructive Surgery, Houston Methodist Hospital, Houston, TX.

[Non-Oral Poster 20](#)

URINARY TRACT INFECTION FOLLOWING MIDURETHRAL SLING

S. Bhandari Randhawa¹; C. Chen³; M. Varasteh Kia³; J. B. Long, MD²

¹Dept. of Obstetrics and Gynecology, Reading Hospital, King of Prussia, PA,

²Dept of Obstetrics and Gynecology, Penn State Hershey, Hershey, PA, ³Dept. of Obstetrics and Gynecology, Johns Hopkins Medicine, Baltimore, MD.

Non-Oral Poster 21 – MOVED TO ORAL POSTER 16A

[Non-Oral Poster 22](#)

LAPAROSCOPIC-ASSISTED MYOMECTOMY WITH UTERINE ARTERY OCCLUSION IN MORBIDLY OBESE PATIENTS AT A FREESTANDING AMBULATORY SURGERY CENTER

P. Mackoul; N. Danilyants; L. van der Does; L. Haworth; N. Kazi Research, Center for Innovative GYN Care, Rockville, MD.

[Non-Oral Poster 23](#)

POSTOPERATIVE URINARY RETENTION FOLLOWING BENIGN GYNECOLOGIC SURGERY WITH A LIBERAL VS. STRICT VOIDING PROTOCOL

M. T. Siedhoff; K. N. Wright; M. Misal; A. Molina; N. Greene

Minimally Invasive Gynecologic Surgery, Cedars-Sinai Medical Center, Los Angeles, CA.

[Non-Oral Poster 24](#)

VALIDATION OF THE BODY IMAGE IN PELVIC ORGAN PROLAPSE QUESTIONNAIRE IN SPANISH-SPEAKING LATINAS

T. I. Montoya¹; O. Morera²; S. Sanchez¹; V. T. Mallett¹

¹Obstetrics and Gynecology, Texas Tech University HSC El Paso, El Paso, TX,

²Psychology, University of Texas at El Paso, El Paso, TX.

Non-Oral Posters

Non-Oral Poster 25

MECHANISMS UNDERLYING NOCTURIA IN WOMEN WITH BLADDER PAIN SYNDROME/INTERSTITIAL CYSTITIS

J. Suyama¹; F. Yang²; A. Soriano¹; H. Rao³; L. A. Arya¹

¹Obstetrics & Gynecology, Hospital of the University of Pennsylvania, Philadelphia, PA, ²Neuroscience, Georgetown University, Washington, DC, ³Neurology, University of Pennsylvania, Philadelphia, PA.

Non-Oral Poster 26

RELATIONSHIP BETWEEN PELVIC ORGAN PROLAPSE AND AGE AT FIRST BIRTH

R. Wang; P. Tulikangas; E. Tunitsky Hartford Hospital, Hartford, CT.

Non-Oral Poster 27

COSTS OF DELAYED VS INTRAOPERATIVE RECOGNITION OF LOWER URINARY TRACT INJURY AT THE TIME OF LAPAROSCOPIC HYSTERECTOMY

D. Gilchrist-Scott; M. G. Mueller; J. Geynisman-Tan; K. Kenton OB/GYN, Northwestern University, Chicago, IL.

Non-Oral Poster 28

PREVALENCE OF PELVIC ORGAN PROLAPSE AFTER VAGINAL HYSTERECTOMY WITH PROPHYLACTIC APICAL SUPPORT

J. Talbott¹; R. Butterfield III³; M. Girardo³; J. Yi²; M. Wasson²

¹Mayo Clinic Alix School of Medicine, Tempe, AZ, ²Gynecology, Mayo Clinic, Phoenix, AZ, ³Health Sciences Research, Mayo Clinic, Scottsdale, AZ.

Non-Oral Poster 29

EFFECT OF TUNNELING ON COLORECTAL AND PROLAPSE SYMPTOMS DURING SACROCOLPOPEXY

F. Dursun; K. Lewis; T. Lee; G. Kilic

University of Texas Medical Branch, Galveston, TX.

Non-Oral Poster 30

PREOPERATIVE EVALUATION WITH MRI AND LDH TESTING IN PATIENTS UNDERGOING INTRA-ABDOMINAL SURGERY FOR FIBROIDS: EFFECT ON SURGICAL ROUTE

A. J. Kim²; L. Boyd⁴; N. Ringel¹; J. Meyer¹; G. Bennett³; V. Lerner²

¹Obstetrics and Gynecology, New York University Langone Health, New York, NY,

²Obstetrics and Gynecology, Albert Einstein College of Medicine / Montefiore Medical Center, Bronx, NY, ³Radiology, New York University Langone Health, New York, NY, ⁴Gynecologic Oncology, New York University Langone Health, New York, NY.

Non-Oral Posters

Non-Oral Poster 31

RANDOMIZED CONTROLLED TRIAL OF ULTRASOUND-GUIDED INTRAUTERINE DEVICE INSERTION

L. Li; T. Wright; S. J. Estes

Obstetrics and Gynecology, Pennstate Milton S. Hershey Medical Center, Harrisburg, PA.

Non-Oral Poster 32

PATIENT EXPERIENCE AND UNPLANNED PATIENT CONTACT AFTER IMPLEMENTATION OF AN ENHANCED RECOVERY AFTER SURGERY PROTOCOL FOR LAPAROSCOPIC HYSTERECTOMY

K. N. Wright¹; I. Ronen¹; M. T. Siedhoff¹; I. Cass²

¹Ob/Gyn, Cedars-Sinai Medical Center, Los Angeles, CA, ²Dartmouth Hitchcock Medical Center, Lebanon, NH.

Non-Oral Poster 33

RELATIONSHIP BETWEEN SYMPTOMS AND URINARY BIOMARKERS IN WOMEN WITH DRY OVERACTIVE BLADDER

D. Hassani; A. Soriano; L. A. Arya; U. U. Andy

University of Pennsylvania, Philadelphia, PA.

Non-Oral Poster 34

BASELINE PAIN MEDICATION USE BEFORE AND AFTER ANTI-OPIOID LEGISLATION IN A PREOPERATIVE UROGYNECOLOGIC POPULATION

P. Edge¹; H. Leazer²; J. M. Wu³; M. Willis-Gray³

¹Obstetrics and Gynecology, University of North Carolina at Chapel Hill, Chapel Hill, NC, ²University of North Carolina School of Medicine, Chapel Hill, NC, ³Female Pelvic Medicine and Reconstructive Surgery, University of North Carolina at Chapel Hill, Chapel Hill, NC.

Non-Oral Poster 35

BODY IMAGE IMPROVES AMONG WOMEN UNDERGOING PROLAPSE REPAIR REGARDLESS OF WHETHER OR NOT HYSTERECTOMY IS PERFORMED OR TRANSVAGINAL MESH IS USED.

R. G. Rogers^{1,2}; M. Ackenbom⁴; L. Barden³; N. Korbly⁵; I. Meyer⁶; D. Mazloomdoost⁷; A. L. Smith⁸; S. Thomas³; C. Nager⁹

¹Women's Health, University of Texas, Austin, Austin, TX, ²Obstetrics and Gynecology, University of New Mexico, Albuquerque, NM, ³RTI International, Research Triangle Park, NC, ⁴Obstetrics and Gynecology, University of Pittsburgh, Pittsburgh, PA, ⁵Obstetrics and Gynecology, Brown University, Providence, RI, ⁶Obstetrics and Gynecology, University of Alabama, Birmingham, AL, ⁷NICHD, Bethesda, MD, ⁸Division of Urology, University of Pennsylvania, Philadelphia, PA, ⁹Obstetrics and Gynecology, University of California, San Diego, San Diego, CA.

Non-Oral Posters

Non-Oral Poster 36

CORRELATION OF ENDOMETRIOSIS ON PREOPERATIVE MRI AND SURGICAL PATHOLOGY

D. Shustarovich; M. McNeely; C. Andrew; S. A. Scheib
Ob Gyn, LSU HSC, New Orleans, LA.

Non-Oral Poster 37

USE OF COLPOTOMY FOR CONTAINED TISSUE EXTRACTION DURING LAPAROSCOPIC MYOMECTOMY

K. Koss; L. Rosen; A. Copperman; V. Kolev; K. Zakashansky
Department of Obstetrics, Gynecology, and Reproductive Science, Mount Sinai Hospital, New York, NY.

Non-Oral Poster 38

HOSPITAL REVISITS FOLLOWING HYSTERECTOMY FOR BENIGN INDICATIONS

C. E. Bretschneider¹; S. Crawford⁴; J. Schold⁴; D. Sheyn²; K. Propst³
¹Obstetrics and Gynecology, Northwestern Medicine, Chicago, IL, ²The MetroHealth System, Cleveland, OH, ³Ob/Gyn & Women's Health Institute, Cleveland Clinic, Cleveland, OH, ⁴Center for Population Health Research, Cleveland Clinic, Cleveland, OH.

Non-Oral Poster 39

D-MANNOSE VS OTHER AGENTS FOR RECURRENT URINARY TRACT PREVENTION IN ADULT WOMEN: A SYSTEMATIC REVIEW AND META-ANALYSIS

S. Lenger¹; M. S. Bradley²; D. Thomas¹; M. Bertolet²; J. Lowder¹; S. Sutcliffe¹
¹Washington University in St Louis, St Louis, MO, ²University of Pittsburgh, Pittsburgh, PA.

Non-Oral Poster 40

PELVIC CROSS SECTIONAL AREA AT THE LEVEL OF THE LEVATOR ANI IS ASSOCIATED WITH PROLAPSE

A. G. Sammarco¹; D. Sheyn²; C. X. Hong³; E. K. Kobernik⁴; C. W. Swenson⁵; J. O. DeLancey⁵
¹Female Pelvic Medicine and Reconstructive Surgery, Rush University Medical Center, Chicago, IL, ²Female Pelvic Medicine and Reconstructive Surgery, MetroHealth Medical Center, Cleveland, OH, ³Obstetrics and Gynecology, University of Pennsylvania, Philadelphia, PA, ⁴Obstetrics and Gynecology, Michigan Medicine, Ann Arbor, MI, ⁵Female Pelvic Medicine and Reconstructive Surgery, Michigan Medicine, Ann Arbor, MI.

Non-Oral Posters

Non-Oral Poster 41

LAPAROSCOPIC RETROPERITONEAL HYSTERECTOMY WITH UTERINE ARTERY LIGATION IN MORBIDLY OBESE PATIENTS AT A FREESTANDING AMBULATORY SURGERY CENTER

P. Mackoul; N. Danilyants; L. van der Does; L. Haworth; N. Kazi Research, Center for Innovative GYN Care, Rockville, MD.

Non-Oral Poster 42

WHAT DO RESIDENTS WANT IN A SURGICAL VIDEO? TRAINEE PERSPECTIVES ON THE VAGINAL HYSTERECTOMY

A. Soriano; J. Oh; D. Hassani; U. U. Andy; L. A. Arya
Obstetrics and Gynecology, University of Pennsylvania, Philadelphia, PA.

Non-Oral Poster 43

FIRST-IN-HUMAN CLINICAL TRIAL OF A NEW ROBOT-ASSISTED SURGICAL SYSTEM FOR TOTAL LAPAROSCOPIC HYSTERECTOMY

D. Kelkar¹; M. Borse¹; G. Godbole¹; U. Kurlekar¹; E. Dinneen²; L. Stevens³; M. Slack⁴

¹Deenanath Mangeshkar Hospital and Research Center, Maharashtra, India, ²Division of Surgical and Interventional Sciences, University College London, London, United Kingdom, ³Queen Mary University London, London, United Kingdom, ⁴CMR Surgical, Cambridge, United Kingdom.

Non-Oral Poster 44

OXYCODONE USE DURING THE POST-OPERATIVE PERIOD AFTER HYSTERECTOMY FOR BENIGN INDICATIONS

J. M. Miranne^{1,2}; T. Abdalian¹; I. Gabriel¹; S. Cohen^{3,2}; M. Ajao^{3,2}; J. Einarsson^{3,2}; V. Minassian^{1,2}

¹Urogynecology, Brigham and Women's Hospital, Boston, MA, ²Harvard Medical School, Boston, MA, ³Minimally Invasive Gynecologic Surgery, Brigham and Women's Hospital, Boston, MA.

Non-Oral Poster 45

THE FIRST INJECTION: RATES OF URINARY RETENTION IN WOMEN WITH URGENCY INCONTINENCE TREATED WITH INTRAVESICAL ONABOTULINUMTOXINA (BOTOX) INJECTION

N. A. Squires¹; M. G. Mueller²; C. Lewicky-Gaup²; S. A. Collins²; K. Kenton²; J. Geynisman-Tan²

¹Feinberg School of Medicine, Northwestern University, Chicago, IL, ²Obstetrics and Gynecology, Northwestern University, Chicago, IL.

Non-Oral Posters

Non-Oral Poster 46

IMPACT OF REPORTED ALLERGIES IN TREATMENT OF WOMEN WITH RECURRENT URINARY TRACT INFECTION

A. Guanzon¹; M. Heit¹; L. Dbeibo²; A. Desai³

¹Ob/Gyn, Indiana University School of Medicine, Indianapolis, IN, ²Infectious Diseases, Indiana University School of Medicine, Indianapolis, IN, ³Pharmacy, Indiana University Health, Indianapolis, IN.

Non-Oral Poster 47

SEX-BASED DIFFERENCES IN GYNECOLOGIC SURGEON IMPOSTER SYNDROME AND LEADERSHIP AND PROMOTION IN AN ACADEMIC HOSPITAL

C. K. Kisby¹; K. C. Mara³; S. Laughlin²; J. A. Occhino¹; I. Green²

¹Urogynecology, Mayo Clinic, Rochester, MN, ²Minimally Invasive Gynecologic Surgery, Mayo Clinic, Rochester, MN, ³Division of Statistics & Bioinformatics, Mayo Clinic, Rochester, MN.

Non-Oral Poster 48

ASSOCIATION OF HISPANIC ETHNICITY WITH COMPLICATIONS AFTER BENIGN HYSTERECTOMY

R. M. Summey; C. Salazar

Department of Women's Health, University of Texas at Austin Dell Medical School, Austin, TX.

Non-Oral Poster 49

INCIDENCE AND RISK FACTORS FOR TRANSIENT URETERAL OBSTRUCTION AT THE TIME OF UTEROSACRAL LIGAMENT VAULT SUSPENSION

O. H. Chang¹; S. Tewari²; J. Sun³; C. A. Ferrando¹

¹Female Pelvic Medicine and Reconstructive Surgery, Cleveland Clinic, Cleveland, OH, ²Cleveland Clinic Lerner College of Medicine, Cleveland, OH, ³Colorectal Surgery, Cleveland Clinic, Cleveland, OH.

Non-Oral Poster 50

THE INFLUENCE OF PATIENTS' GOALS ON SURGICAL SATISFACTION

A. W. Gillingham; K. Kenton; J. Geynisman; M. G. Mueller; C. Lewicky-Gaup; S. A. Collins Female Pelvic Medicine and Reconstructive Surgery, Northwestern University, Chicago, IL.

Non-Oral Poster 51

PRE- AND POSTOPERATIVE MRI COMPARISON OF ANATOMICAL FINDINGS AT 11 YEARS FOLLOWING NATIVE TISSUE PROLAPSE REPAIR: A PRELIMINARY ANALYSIS

P. Schmidt¹; L. Chen^{1,2}; J. O. DeLancey¹; C. W. Swenson¹

¹Ob/Gyn - Urogynecology, University of Michigan, Ann Arbor, MI, ²Biomedical Engineering, University of Michigan, ANN ARBOR, MI.

Non-Oral Posters

Non-Oral Poster 52 - WITHDRAWN

Non-Oral Poster 53 - WITHDRAWN

Non-Oral Poster 54

IS HYSTERECTOMY A RISK FACTOR FOR URINARY RETENTION? A RETROSPECTIVE MATCHED CASE CONTROL STUDY

M. Misal; J. Yang; S. Behbehani; M. Wasson

Department of Gynecologic surgery, Mayo Clinic Arizona, Phoenix, AZ.

Non-Oral Poster 55

COST-EFFECTIVENESS ANALYSIS OF SURGICAL REPAIR FOR APICAL PROLAPSE

R. Wang¹; M. R. Hacker²; M. Richardson²

¹Hartford Hospital, Hartford, CT, ²Beth Israel Deaconess Medical Center, Boston, MA.

Non-Oral Poster 56

EVALUATING RISK FACTORS ASSOCIATED WITH NEED FOR BLOOD TRANSFUSIONS AFTER UROGENITAL FISTULA REPAIR IN UGANDA

T. Potluri¹; L. M. Holt¹; J. P. Tanner²; L. Wasingya³; S. Duffy^{4,5}; K. A. Greene^{6,4}

¹Morsani College of Medicine, University of South Florida, Tampa, FL, ²College of Public Health, University of South Florida, Tampa, FL, ³Department of Medicine, Kitovu Hospital, Masaka, Uganda, ⁴Kitovu Hospital Fistula Unit, Masaka, Uganda, ⁵Chelsea and Westminster Hospital, London, United Kingdom, ⁶Department of Female Pelvic Medicine and Reconstructive Surgery, University of South Florida, Tampa, FL.

Non-Oral Poster 57

AGE IS JUST A NUMBER: IN OLDER PATIENTS, RISK OF POSTOPERATIVE ADMISSION, READMISSION AND COMPLICATIONS AFTER SLING PROCEDURES FOR STRESS INCONTINENCE IS LOW

A. Jaresova^{1,2}; W. D. Winkelman^{1,2,3}; A. Modest^{1,2}; M. Richardson^{1,2}

¹Obstetrics and Gynecology, Beth Israel Deaconess Medical Center, Boston, MA, ²Obstetrics, Gynecology and Reproductive Biology, Harvard Medical School, Boston, MA, ³Boston Urogynecology Associates, Mount Auburn Hospital, Cambridge, MA.

Non-Oral Poster 58

MIND THE GAP – CHANGES IN LEVATOR DIMENSIONS FOLLOWING SACROCOLPOPEXY

J. Geynisman-Tan; K. Kenton; O. Brown; A. W. Gillingham; C. Lewicky-Gaupp;

M. G. Mueller; S. A. Collins Obstetrics and Gynecology, Northwestern University, Chicago, IL.

Non-Oral Posters

Non-Oral Poster 59

MANAGEMENT AND GYNECOLOGIC SEQUELAE OF VULVOVAGINAL INVOLVEMENT IN STEVENS-JOHNSON SYNDROME

L. A. Jackson¹; J. Shields¹; N. Gaddam¹; S. Meinhardt¹; G. Hanco³; M. Mauskar²; M. E. Florian-Rodriguez¹

¹Obstetrics and Gynecology , University of Texas Southwestern Medical Center , Dallas, TX, ²Dermatology, University of Texas Southwestern Medical Center, Dallas, TX, ³University of Texas Southwestern Medical School, Dallas, TX.

Non-Oral Poster 60

AN UPDATE TO LEFT UPPER QUADRANT ANATOMY IN NON-OBESE AND OBESE WOMEN

K. Chaves; J. Johnson; A. Yunker

Obstetrics & Gynecology, Vanderbilt University Medical Center, Nashville, TN.

Non-Oral Poster 61

PATIENT PREDICTORS OF COMPLIANCE RATES AFTER IMPLEMENTATION OF AN ENHANCED RECOVERY PROTOCOL

S. Carlson^{1,2}; R. Taylor²; L. Griebel^{1,2}; S. Batra^{1,2}; S. A. El-Nashar¹; M. Billow¹

¹OB/GYN, University Hospitals Cleveland Medical Center, Cleveland, OH, ²Case Western Reserve School of Medicine, Cleveland, OH.

Non-Oral Poster 62

QUANTIFYING ANXIETY IN WOMEN AT THE INITIAL GYNECOLOGY VISIT

A. Rugova¹; L. C. Yang²; L. Westbay²; T. T. Pham²

¹Loyola University Stritch School of Medicine, Maywood, IL, ²Obstetrics and Gynecology, Loyola University Medical Center, Maywood, IL.

Non-Oral Poster 63

RISK FACTORS FOR FAILED SURGICAL REPAIR OF UROGENITAL FISTULAS

L. M. Holt¹; T. Potluri¹; J. P. Tanner⁴; S. Duffy^{3,2}; L. Wasingya³; K. A. Greene^{1,3}

¹Department of Female Pelvic Medicine and Reconstructive Surgery, University of South Florida, Tampa, FL, ²FRCOG New Futures Group, Chelsea and Westminster Hospital, London, United Kingdom, ³Fistula Unit, Kitovu Hospital, Masaka, Uganda, ⁴College of Public Health, University of South Florida, Tampa, FL.

Non-Oral Poster 64

STEPWISE APPROACH TO THE MEDICAL AND SURGICAL MANAGEMENT OF ENDOMETRIOSIS RELATED PAIN: A COST-EFFECTIVENESS ANALYSIS

J. A. Bohn; K. A. Bullard; M. I. Rodriguez; A. M. Ecker OBGYN, Oregon Health & Science University, Portland, OR.

Non-Oral Posters

Non-Oral Poster 65

WAIT TIMES IN FEMALE PELVIC MEDICINE AND RECONSTRUCTIVE SURGERY: A MYSTERY CALLER STUDY

S. Rabice¹; T. Muffly²

¹Obstetrics and Gynecology, Saint Joseph Hospital, Denver, CO, ²Female Pelvic Medicine and Reconstructive Surgery, Denver Health, Denver, CO.

Non-Oral Poster 66

PREDICTORS OF DELAYED DIAGNOSIS OF POSTOPERATIVE URINARY RETENTION AFTER FEMALE PELVIC RECONSTRUCTIVE SURGERY

E. Sappenfield¹; T. Scutari¹; D. M. O'Sullivan²; P. Tulikangas¹

¹Female Pelvic Medicine & Reconstructive Surgery, Hartford Hospital, Hartford, CT, ²Research Program, Hartford Healthcare, Hartford, CT.

Non-Oral Poster 67

RATE OF URETERAL COMPROMISE AND RECURRENT PROLAPSE FOLLOWING LAPAROSCOPIC UTEROSACRAL LIGAMENT SUSPENSION: A RETROSPECTIVE STUDY

M. G. Gabra; V. Winget; I. Addis; K. Hatch; J. Heusinkveld University of Arizona, Tucson, AZ.

Non-Oral Poster 68

CHARACTERISTICS OF RANDOMIZED CONTROLLED TRIALS IN GYNECOLOGICAL SURGERY REGISTERED ON CLINICALTRIALS.GOV

R. Feroz¹; J. B. Long¹; M. Gupta²; A. Kunselman¹; S. Wagner²

¹Penn State Milton S. Hershey Medical Center, Hummelstown, PA, ²University of Texas Health Science Center at Houston, Houston, TX.

Non-Oral Poster 69

SALPINGECTOMY VS. TUBAL OCCLUSION FOR PERMANENT CONTRACEPTION DURING CESAREAN DELIVERY: OUTCOMES AND PHYSICIAN ATTITUDES

D. Levy¹; S. Casey²; G. Zemtsov³; J. L. Whiteside¹

¹Obstetrics and Gynecology, University of Cincinnati, Cincinnati, OH, ²Obstetrics and Gynecology, Advocate Aurora, Milwaukee, WI, ³Obstetrics and Gynecology, Duke University, Durham, NC.

Non-Oral Poster 70

DYNAMIC MAGNETIC RESONANCE IMAGING OF PELVIC ANATOMY FOLLOWING VAGINAL RECONSTRUCTIVE SURGERY; A PROSPECTIVE STUDY

A. Shatkin-Margolis¹; E. Duke³; V. C. Ghodsi²; A. M. Hill¹; C. C. Crisp¹;

J. Yeung¹; S. D. Kleeman¹; R. N. Pauls¹

¹Female Pelvic Medicine & Reconstructive Surgery, TriHealth Good Samaritan, Cincinnati, OH, ²Female Pelvic Medicine & Reconstructive Surgery, Hatton Research Institute, Cincinnati, OH, ³Radiology, TriHealth Good Samaritan, Cincinnati, OH.

Non-Oral Posters

Non-Oral Poster 71

EFFECT OF PUDENDAL BLOCKADE ON BLADDER EMPTYING AFTER MIDURETHRAL SLING: A RANDOMIZED CONTROLLED TRIAL

D. Maheshwari^{1,2}; T. Sierra^{1,2}; C. Hall^{1,2}; K. Leung¹; M. K. Flynn^{1,2}

¹University of Massachusetts Medical School, Worcester, MA, ²UMass Memorial Medical Center, Worcester, MA.

Non-Oral Poster 72

ANTIMICROBIAL STEWARDSHIP IN PATIENTS WITH PENICILLIN ALLERGY UNDERGOING HYSTERECTOMY

L. M. Miceli¹; O. Chang¹; S. Zhang²; M. Yao³; K. Propst¹

¹OBGYN, Cleveland Clinic Foundation, Cleveland, OH, ²Case Western Reserve University School of Medicine, Cleveland, OH, ³Department of Statistics, Cleveland Clinic Foundation, Cleveland, OH.

Non-Oral Poster 73 - WITHDRAWN

Non-Oral Poster 74

A PERFORMANCE IMPROVEMENT STUDY TO MAXIMIZE MULTIDISCIPLINARY COMMUNICATION USING A JOINT GYNECOLOGY TEAM PHONE

B. Ha¹; A. H. Freeman²; L. W. Knayzeh¹; M. Morrill¹

¹Obstetrics and Gynecology, Kaiser Permanente San Francisco, San Francisco, CA, ²Gynecologic Oncology, Kaiser Permanente San Francisco, San Francisco, CA.

Non-Oral Poster 75

SELF- ASSESSMENT OF NURSING PREPAREDNESS AND KNOWLEDGE IN THE CARE OF PATIENTS WITH COMPLEX OBSTETRICAL LACERATIONS

M. Melanson; A. Conner; E. R. Trowbridge OBGYN, University of Virginia, Charlottesville, VA.

Non-Oral Poster 76

EFFECT OF CONCOMITANT PELVIC FLOOR PROCEDURES ON PROLONGED CATHETERIZATION AFTER SLING SURGERY

A. T. Gray; L. Siff; E. Springel; A. Carroll OBGYN, VCU Health, Richmond, VA.

Non-Oral Poster 77

ARE WE COLORBLIND? A REVIEW OF RACIAL AND/OR ETHNIC REPRESENTATION WITHIN THE PELVIC ORGAN PROLAPSE PRACTICE BULLETIN

C. Brandon¹; C. Escobar¹; C. Oh²; B. Brucker¹

¹Urology/OBGYN, New York University, New York, NY, ²Population Health, New York University, New York, NY.

Non-Oral Posters

Non-Oral Poster 78

EFFECT OF TIME OF YEAR ON SURGICAL OUTCOMES IN PATIENTS UNDERGOING MINIMALLY INVASIVE SACRAL COLPOPEXY OR UTEROSACRAL LIGAMENT SUSPENSION

K. Renkosiak¹; A. Dubinskaya¹; M. S. Bradley²; J. P. Shepherd¹

¹Trinity Health of New England, Hartford, CT, ²University of Pittsburgh Medical Center, Pittsburgh, PA.

Non-Oral Poster 79

LIPOSOMAL BUPIVACAINE IN OPEN GYNECOLOGIC SURGERY AT AN URBAN SAFETY-NET HOSPITAL

M. Fowler¹; L. Mendez^{1,5}; S. M. Whitehead²; B. Shah²; K. A. Garel³; N.

Saravanan⁴; P. Hendessi¹; M. Anand¹ ¹Obstetrics and Gynecology, Boston Medical Center, Boston, MA, ²Pharmacy, Boston Medical Center, Boston, MA,

³Obstetrics and Gynecology, Santa Clara Valley Medical Center, San Jose, CA,

⁴Boston University School of Medicine, Boston, MA, ⁵Boston University School of Public Health, Boston, MA.

Non-Oral Poster 80

EFFECT OF SURGICAL CASE ORDER ON PERIOPERATIVE OUTCOMES OF TOTAL LAPAROSCOPIC HYSTERECTOMY FOR BENIGN INDICATIONS

A. Davenport; D. Sheyn

Obstetrics & Gynecology, MetroHealth Medical Center, Parma Heights, OH.

Non-Oral Poster 81

EFFECT OF MORCELLATION SITE AND ROUTE ON MINIMALLY INVASIVE HYSTERECTOMY OUTCOMES IN PATIENTS WITH CLASS 3 OBESITY

J. Wong¹; J. Whitley²; K. Voltzke¹; M. Louie¹

¹Obstetrics and Gynecology, University of North Carolina, Chapel Hill, NC,

²Obstetrics and Gynecology, George Washington University Hospital, Washington, DC.

Non-Oral Poster 82

EFFECTIVENESS OF REDUCED SITE INJECTION PROTOCOL OF INTRA-DETRUSOR ONABOTULINUMTOXINA

E. Hoover; M. H. Vaughan; E. R. Trowbridge; K. Hullfish

Obstetrics and Gynecology, University of Virginia, Charlottesville, VA.

Non-Oral Poster 83

VULVOVAGINAL INVOLVEMENT IN STEVENS-JOHNSON SYNDROME AND TOXIC EPIDERMAL NECROLYSIS: MANAGEMENT AND TECHNIQUES USED TO REDUCE GYNECOLOGIC SEQUELAE

C. Crowder; C. Kraus; S. E. Jeney; F. L. Lane; N. Bernal Obstetrics and Gynecology, UC Irvine, Orange, CA.

Non-Oral Posters

Non-Oral Poster 84

KNOWLEDGE OF PELVIC FLOOR DISORDERS WITHIN AN UNDERSERVED POPULATION

K. A. Volpe¹; B. Özel²; R. S. Nelken²; M. Stern¹; C. E. Dancz²; L. Rodriguez¹

¹Urology, USC Keck School of Medicine, Los Angeles, CA, ²OBGYN, USC Keck School of Medicine, Los Angeles, CA.

Non-Oral Poster 85

RETROPERITONEAL LIGATION OF THE UTERINE ARTERIES DURING LAPAROSCOPIC HYSTERECTOMY USING POLYMER CLIPS

S. Radtke; V. Galaviz; S. Mishaw

Obstetrics and Gynecology, Texas Tech University Health and Sciences Center, El Paso, TX.

Non-Oral Poster 86

RETROGRADE VERSUS SPONTANEOUS VOID TRIAL OUTCOMES AFTER VAGINAL SURGERY: A RETROSPECTIVE ANALYSIS

A. Werth; S. Shah; B. Vakili

Ob/Gyn, Christiana Care, Wilmington, DE.

Non-Oral Poster 87

TRUTH OR MYTH: INTRAABDOMINAL PRESSURE INCREASES IN THE LITHOTOMY POSITION

K. Young; T. Mou; M. Tavathia; J. Geynisman-Tan; S. A. Collins; M. G. Mueller; C.

Lewicky-Gaupp; K. Kenton Northwestern Feinberg School of Medicine, Chicago, IL.

Non-Oral Poster 88

ASSESSING THE RISK OF CONCURRENT ENDOMETRIAL CANCER AMONG WOMEN WITH ENDOMETRIAL HYPERPLASIA

J. Lee¹; V. Maldonado¹; K. Eng²; P. Lagiou³

¹Obstetrics and Gynecology, Sisters of Charity hospital, University at Buffalo, Buffalo, NY, ²Department of Biostatistics and Bioinformatics, Roswell Park Cancer Institute, Buffalo, NY, ³Epidemiology, Harvard T.H. Chan school of Public Health, Boston, MA.

Non-Oral Poster 89

WHAT IS THE HOLDUP? PATIENT THOUGHTS ON PROGRESSING TO 3RD LINE THERAPY FOR TREATMENT OF OVERACTIVE BLADDER

C. Amegashie¹; V. deMartelly²; S. Valaitis²; J. Letko²; D. Glass²; L. Fetzter²; S. Botros³; K. Wroblewski⁴; S. Iyer²

¹Pritzker School of Medicine, The University of Chicago, Chicago, IL, ²Obstetrics and Gynecology, The University of Chicago, Chicago, IL, ³Urology, The University of Texas, San Antonio, San Antonio, TX, ⁴Public Health Sciences, The University of Chicago, Chicago, IL.

Non-Oral Posters

Non-Oral Poster 90

ASSESSING ACTIVITY AND RECOVERY FOLLOWING BENIGN GYNECOLOGIC SURGERY USING AN ACTIVITY MONITOR AND VALIDATED TOOL SETS: A PILOT STUDY

J. J. Kim¹; C. Young²; R. Walters¹; T. Ryntz¹; L. A. Yurteri-Kaplan¹; C. Grimes³; Y. Huang¹; A. Advincula¹ ¹OBGYN, Columbia University Medical Center, New York, NY, ²OBGYN, Icahn School of Medicine at Mt Sinai, New York, NY, ³OBGYN, Westchester Medical Center, Hawthorne, NY.

Non-Oral Poster 91

THE RELUCTANCE TO USE MESH FOR CONTINENCE SURGERY AND IMPACT ON OUTCOMES OF DIFFERENT TREATMENT MODALITIES BETWEEN 2013-2019

P. Bhal¹; N. Bhal^{2,1}; C. Bisseling^{3,1}; J. Davies¹; J. Jones¹

¹Urogynaecology and Vaginal surgery, University Hospital of Wales, Cardiff, Wales, United Kingdom, ²Urogynaecology, Royal Glamorgan Hospital, Llantrisant, Wales, United Kingdom, ³Department of Urogynaecology, Princess of Wales Hospital, Bridgend, United Kingdom.

Non-Oral Poster 92

INCIDENCE OF CYSTOTOMY WITH AND WITHOUT USE OF A RIGID CATHETER GUIDE DURING PLACEMENT OF RETROPUBIC MIDURETHRAL SLINGS

J. R. Johnson²; S. Rozycki²; A. Ordonez³; D. Antosh¹; T. Muir¹

¹Female Pelvic Medicine and Reconstructive Surgery, Houston Methodist Hospital, Houston, TX, ²OB/GYN, Houston Methodist Hospital, Houston, TX, ³Center for Outcomes Research, Methodist Research Institute, Houston Methodist Hospital, Houston, TX.

Non-Oral Poster 93

THE IMPACT OF AN UROGYNECOLOGIC-SPECIFIC ENHANCED RECOVERY AFTER SURGERY (ERAS) PATHWAY IMPLEMENTATION IN OPEN PROLAPSE SURGERY.

A. Teles Abrao Trad; P. Tamhane; A. Weaver; M. V. Baker; S. Visscher; D. Borah; E. Kalogera; C. Klingele; J. Gebhart; E. Trabuco
Mayo Clinic, Rochester, MN.

Non-Oral Poster 94

SHOULD WE ABANDON THE USE OF DOPPLER FLOW AS PART OF THE EVALUATION OF THE PATIENT WITH SUSPECTED OVARIAN TORSION? A RETROSPECTIVE STUDY IN A LARGE ACADEMIC CENTER.

C. Ibrahim²; D. Timmons¹; S. Fertel¹; T. Beguiristain¹; J. Morano¹; J. Carugno¹

¹Obstetrics, Gynecology and Reproductive Sciences, University of Miami, Miami, FL, ²University of Miami Miller School of Medicine, Miami, FL.

Non-Oral Posters

Non-Oral Poster 95

EFFICACY AND SAFETY OF THORACIC EPIDURAL VS. TRANSVERSUS ABDOMINIS PLANE BLOCK (TAP) IN LAPAROTOMY FOR GYNECOLOGIC SURGERY

J. Panza¹; C. M. Helou¹; A. Goulder¹; S. Dumas²; L. Sorabella²; L. Prescott¹; R. Adam¹

¹OBGYN, Vanderbilt University Medical Center, Nashville, TN, ²Anesthesia, Vanderbilt University Medical Center, Nashville, TN.

Non-Oral Poster 96

RISK FACTORS FOR PERIOPERATIVE BLOOD TRANSFUSION IN PATIENTS UNDERGOING HYSTERECTOMY FOR BENIGN DISEASE.

D. Timmons¹; M. M. Grady²; M. Lederer²; A. Wong¹; F. Andrade¹; J. Carugno¹

¹Obstetrics, Gynecology and Reproductive Sciences, University of Miami, Miami, FL, ²University of Miami Miller School of Medicine, Miami, FL.

Non-Oral Poster 97

PREPARING FOR FLS: A SURVEY OF RESIDENTS IN OBSTETRICS & GYNECOLOGY

A. Porter; C. Y. Stephanie; T. Fuller; K. A. Kho ObGyn, UT Southwestern, Dallas, TX.

Non-Oral Poster 98

PERIOPERATIVE MORBIDITY IN PATIENTS WITH CLASS III OBESITY UNDERGOING HYSTERECTOMY FOR BENIGN DISEASE.

M. Lederer²; D. Timmons¹; M. M. Grady²; S. Yazdani¹; A. Verna¹; F. Andrade¹; J. Carugno¹

¹Obstetrics, Gynecology and Reproductive Sciences, University of Miami, Miami, FL, ²University of Miami Miller School of Medicine, Miami, FL.

Non-Oral Poster 99

TRAINING, EDUCATION FOR ROBOTIC PERFORMANCE WITH SIMULATION (TERPS): MAINTENANCE OF CERTIFICATION FOR ROBOTIC SURGEONS

V. Dorismond¹; B. Bui³; D. M. Roque²; T. V. Sansas¹

¹Obstetrics and Gynecology, Howard University College of Medicine, Washington DC, DC, ²Obstetrics and Gynecology, University of Maryland School of Medicine, Baltimore, MD, ³Psychiatry, University of Maryland School of Medicine, Baltimore, MD.

Non-Oral Posters

Non-Oral Poster 100

THE REAL LIFE OUTCOME OF PERCUTANEOUS TIBIAL NERVE STIMULATION (PTNS) OVER A DECADE FOR REFRACTORY OVERACTIVE BLADDER (OAB) SYMPTOMS

P. Bhal¹; J. Jones¹; N. Bhal^{2,1}; J. Davies¹; C. Bisseling^{3,1}

¹Urogynaecology and Vaginal surgery, University Hospital of Wales, Cardiff, Wales, United Kingdom, ²Royal

Glamorgan Hospital, Llantrisant, United Kingdom, ³Princess of Wales Hospital, Bridgend, United Kingdom.

Non-Oral Poster 101

RELATIONSHIP OF POSTOPERATIVE VAGINAL ANATOMY AND SEXUAL FUNCTION

S. Kim-Fine¹; D. Antosh³; E. Balk²; K. V. Meriwether⁴; G. Kanter⁵; A. Dieter⁶; R. Singh⁷; M. Good⁷; M. Foda⁸; M. Mamik⁹; D. D. Rahn¹⁰; R. Rogers¹¹

¹Obstetrics and Gynecology, University of Calgary, Calgary, Alberta, Canada,

²Brown University, Providence, RI, ³Houston Methodist Hospital, Houston, TX,

⁴University of Louisville, Louisville, KY, ⁵Salinas Valley Medical Center, Salinas,

CA, ⁶University of Texas San Antonio, San Antonio, TX, ⁷University of Florida

Health Jacksonville, Jacksonville, FL, ⁸University of Central Florida College

of Medicine, Starke, FL, ⁹Albert Einstein College of Medicine, New York, NY,

¹⁰University of Texas Southwestern, Dallas, TX, ¹¹University of Texas at Austin Dell

Medical School, Austin, TX.

Non-Oral Poster 102

LAPAROSCOPY IN THE CHRONIC PELVIC PAIN PATIENT: INCIDENCE AND OUTCOMES OF SUBSEQUENT LAPAROSCOPIES

D. Eisenstein; G. Shukr

Women's Health, Henry Ford Health System, Bloomfield, MI.

Non-Oral Poster 103

TREATMENT OF PLACENTA ACCRETA SPECTRUM (PAS) UTILIZING A STANDARDIZED MULTIDISCIPLINARY APPROACH: THE OBSTETRICS-TRAUMA TEAM

E. Myers¹; A. Rosenthal²; D. Pigneri²; S. Samuels³; L. Rivera¹; J. Kang¹

¹Division of Obstetrics and Gynecology, Memorial Healthcare System,

Hollywood, FL, ²Division of Trauma Surgery, Memorial Healthcare System,

Hollywood, FL, ³Office of Human Research, Memorial Healthcare System,

Hollywood, FL.

Non-Oral Posters

Non-Oral Poster 104

SYSTEMATIC REVIEW AND META-ANALYSIS OF COMMERCIALY-AVAILABLE AT-HOME PELVIC FLOOR TRAINING DEVICES THAT PROVIDE BIOFEEDBACK FOR TREATMENT OF URINARY INCONTINENCE.

J. F. Pennycuff; C. Wu; C. Iglesia

Georgetown University School of Medicine, Washington, DC.

Non-Oral Poster 105

RETROSPECTIVE ASSESSMENT OF THE INCREMENTAL DISEASE BURDEN OF URINARY INCONTINENCE

S. Pulliam^{1,2}; M. Datar³; T. Goss³; L. Pan³; J. M. Wu⁴

¹Obstetrics and Gynecology, Tufts University, Boston, MA, ²Renovia, Inc, Boston, MA, ³Boston Healthcare Associates, Boston, MA, ⁴Obstetrics and Gynecology, University of North Carolina at Chapel Hill, Chapel Hill, NC.

Non-Oral Poster 106

PELVIC FLOOR SYMPTOMS FOLLOWING ONABOTULINAMTOXINA TRIGGER POINT INJECTIONS FOR MYOFASCIAL PELVIC PAIN: ANALYSIS OF SECONDARY OUTCOMES

V. Demtchouk^{1,2,3}; E. A. Elkadry^{1,2,3}; A. Pettiette Erlinger^{2,3}

¹Boston Urogynecology Associates, Mount Auburn Hospital, Cambridge, MA,

²Department of Obstetrics and Gynecology, Beth Israel Deaconess Medical

Center, Boston, MA, ³Department of Obstetrics, Gynecology and Reproductive Biology, Harvard Medical School, Boston, MA.

2019 Presidential Award Winners



SGS Video Award

Novel Method to Demarcate Bladder Dissection During Post-Hysterectomy Colpopexy
Katherine L. Dengler, MD
Walter Reed National Military Medical Center



SGS Prize Paper Award

Randomized Placebo-Controlled Trial of Onabotulinumtoxin A Trigger Point Injections for Myofascial Pelvic Pain
Sybil G. Dessie, MD
Mount Auburn Hospital



1st Prize Paper – Fellow/Resident

Return to Baseline Functional Status in Older Women Undergoing Pelvic Organ Prolapse Surgery
Daniel Lee, MD
Hospital of the University of Pennsylvania



2nd Prize Paper – Fellow/Resident

Adverse Childhood Experiences (ACES) in the Chronic Pelvic Pain Population
Tessa E. Krantz, MD
University of New Mexico



David H. Nichols, MD Award for Best Vaginal Surgery Presentation

Mirror, Mirror: Can Vaginal Hysterectomy Look Similar to Laparoscopic Hysterectomy?
Deepanjana Das, MD
Cleveland Clinic Foundation

2019 Presidential Award Winners



SGS Rising Star Award

Annetta Madsen, MD
Allina Health, United Womens' Health



SGS 2019 Distinguished Service Award

Robert Gutman, MD
MedStar Washington Hospital Center



2019 AJOG Impact Award

Comparison of Robotic and Other Minimally Invasive Routes of Hysterectomy for Benign Indications

Carolyn W. Swenson, MD, Neil S. Kamdar, MA,
John A. Harris, MD, Shitanshu Uppal, MD, Darrell
A. Campbell Jr., MD, Daniel M. Morgan, MD



2019 SGS Distinguished Surgeon Award

Supported by the Donald G. Gallup Fund
Holly E. Richter, PhD, MD
University of Alabama in Birmingham



President's Award for Dedicated Service to SGS

Thomas E. Nolan, MD, PhD



SGS Programs Supported by **SHARE** 2019 – 2020

Michael P. Aronson Fund supported scholarships for three young faculty members to attend the 2019 SGS Winter Postgraduate Course

Donald G. Gallup Fund supported the SGS Distinguished Surgeon Award

John O. L. DeLancey Fund supported the activities of the three task forces with the Pelvic Anatomy Group

David H. Nichols Fund supported the 2020 David H. Nichols Award

CoRPS Fund in Honor of Drs. Cheryl Iglesia, Kimberly Kenton, and Holly E. Richter supported the establishment of the CoRPS program within SGS

Mark D. Walters Endowed Lectureship Fund supported the 2020 Mark D. Walters Endowed Lecture

Professional Development Fund supported the Women's Council presentation

Education Fund supported the SGS Fellow Scholars

Honor Your Mentor Program and Research Fund supported the FPRN® and SRG Programs

**Thank you for your continuing support of the
SGS Mission by donating to **SHARE****



SHARE

Surgeons Helping Advance Research & Education

Guardian - \$25,000+

Andrew Cassidenti
Dionysios Veronikis

Ambassador - \$10,000-\$24,999

Michael P. Aronson Family
Ed and Deborah Gallup
Pam Gallup Gaudry
Cheryl Iglesia
Holly Richter

Champion - \$5,000 - \$9,999

Matthew Barber
Rajiv Gala
John B. Gebhart
Thomas E. Nolan
Lisa Peacock
Peter L. Rosenblatt
Kris Strohbehn
R. Edward Varner

Corporate Donors

AbbVie
Cleveland Clinic OB/GYN and Women's Health Institute
Coloplast
Cooper Surgical
Intuitive Surgical
LABORIE

Donor information as of February 15, 2020



SHARE

Surgeons Helping Advance Research & Education

Mentor - \$2,500-\$4,999

W. Allen Addison
James L. Breen
Jeffrey Clemons
Patrick Culligan
Nancy Frankel and Lennie Siegel
Vincent Lucente
Javier Magrina
Catherine Matthews
Stephen Metz
Douglas Miyazaki
Michael Moen
Miles Murphy
Marie Paraiso
Nazema Siddiqui
Marc Toglia
Emily Weber LeBrun
Andrew Walter
Mark and Virginia Walters

Donor information as of February 15, 2020



SHARE

Surgeons Helping Advance Research & Education

Advocate - \$1,000 - \$2,499

Ted Anderson	Yoko Komesu
Danielle Antosh	Nathan Kow
Marc Ashby	Melinda Letterman
Marc Beer	Earnest G. Lockrow
Bryce Bowling	Arnulfo Martinez
Linda Bradley	Kate Meriwether
Peter Bulla	Maggie Mueller
Grace Chen	Tyler Muffly
Ralph Chesson	Tristi Muir
C. Sage Claydon	Deborah Myers
Sarah Collins	Amy Park
Marlene Corton	Cheryl Perrero
Geoffrey W. Cundiff	Charles R. Rardin
Emily Davidson	Beri Ridgeway
John O. L. DeLancey	Rebecca Rogers
Gouri Diwadkar	Robert Rogers
Elisabeth Erekon	Carlos Sarsotti
Sherif El-Nashar	Mitchell Schuster
Tommaso Falcone	Bob Shull
Dee Fenner	Lauren Siff
Cecile Ferrando	Eric Sokol
Sean Francis	Ellen Solomon
Anna Frick	Ryan Stewart
Cara Grimes	Kevin Stepp
Douglass Hale	Vivian Sung
Robert Harris	Megan Tarr
Wesley S. Hilger	Tonya Thomas
Audra Jo Hill	Paul Tulikangas
LaFloyd and Elaine Hobbs	Elena Tunitsky-Bitton
Michael Ingber	Sandip Vasavada
Karl Jallad	L. Lewis Wall
John Jelovsek	Sheldon Weinstein
Peter Jeppson	Sara Wood
Mickey Karram	Kate Woodburn
Kimberly Kenton	Michael Woods
Rosanne Kho	Carl Zimmerman

Donor information as of February 15, 2020



SHARE

Surgeons Helping Advance Research & Education

Patron - \$1 - \$999

Husam Abed	Charelle Carter-Brooks	Cynthia Fok
Yoram Abramov	Elizabeth Casiano	Michelle Follen
Rony Adam	Olivia Chang	Raymond Foster
Lori Adams	Sara Cichowski	Adam Gafni-Kane
Arnold Advincula	William Cliby	Tondalaya Gamble
Vivian Aguilar	Ellen Conner	Sanjay Gandhi
Pakeeza Alam	Jeffrey Cornella	Anna Marie Garcia
Mallika Anand	Catrina Crisp	Alan Garely
Kathryn Arendt	Andrew Croak	Rene Genadry
David Aronson	Erin Crosby	Roxana Geoffrion
Lily Arya	Kris Cvach	Kim Gerten
Charles Ascher-Walsh	Jill Danford	Mohamed A. Ghafar
Sarit O. Aschkenazi	John Davitt	Dobie Giles
Tirsit Asfaw	Nicolette Deveneau	Akira Gillingham
Humphrey Atiemo	Christopher Destephano	Marisa Gilstrap
Jamie Bakkum-Gamez	Jennifer Domingo-Mihalko	Jon Gleason
Scott Bailey	Nicole Donnellan	Karen Gold
Alicia Ballard	Maxine Dorin	Roger Goldberg
Heather Barbier	Sean Dowdy	Angel Gonzalez
Matthew Barker	Keith Downing	Bobbie Gostout
Whitney Barnes	Peter Drewes	Elliot Greenberg
Renee Bassaly	Harold Drutz	Jerod Greer
Ahmet Bedestani	Daniel Duffy	Meghan Griffin
Mitchell Berger	Gena Dunivan	Robert Gutman
Nina Bhatia	Terry S. Dunn	Cynthia Hall
Roberta E. Blandon	Karolynn T. Echols	Barry Hallner
Joan Blomquist	Mark Ellerkmann	Robert Hammer
Katarzyna Bochenska	David Ellington	Jennifer Hamner
Sylvia Bostros	Denise Elser	Harriette Hampton
Jessica Bracken	Sonya Ephraim	Star Hampton
Megan Bradley	Elisabeth Evans	Victoria Handa
Amber Bradshaw	Pamela Fairchild	Charles Hanes
Cynthia Brincat	Linda Fan	Oz Harmanli
Heidi Brown	Tola Fashokun	Wesley J. Harris
Linda Brubaker	Luiz Fernandes	Jessica Heft
Jerome Buller	Paul Fine	Shireen Heidari
Kristina Butler	Seth Finkelstein	Christine Heisler
David Byck	Jocelyn Fitzgerald	Bhumy Heliker
Cassandra Carberry	Robert Flora	John Michael Heusinkveld
James Carter	Maria Florian-Rodriguez	Lisa Hickman

Donor information as of February 15, 2020



SHARE

Surgeons Helping Advance Research & Education

Patron - \$1 - \$999 *continued*

Brian Hines
Deslyn Hobson
Tanya Hoke
Nicolette Horbach
William J. Hoskins
Denise Howard
Lennox Hoyte
Yvonne Hsu
R. Keith Huffaker
William W. Hurd
Momoe Hyakutake
Okey Ibeanu
Jana Illston
Jennifer Inman
Scott Ismael
Shilpa Iyer
Tiffany Jackson
Kristin Jacobs
Van Jenkins
Kelly Jirschele
Lisa Johnson
John Joyce
Scott Kambiss
Leslie Kammire
Padma Kandadai
Gregg Kanter
Nadine Kassiss
Kristinell Keil
Fareesa Khan
Laura Kim
Shunaha Kim Fine
Jennifer Klauschie
Christopher Klingele
Sharon Knight
Leise Knoepp
Anuradha Koduri
Sumana Koduri
Ernest I. Kohorn
Alix Komar
Nicole Korbly

Abner P. Korn
John Kovac
Joseph Kowalski
Tessa Krantz
Bela Kudish
Christina Kwon
Kristina Kwon
Felicia Lane
Maryse Larouche
Wilma Larsen
Kindra Larson
Christine LaSala
Erin Lavelle
Ted Lee
Kenneth Leffler
Gretchen Lentz
Juraj Letko
Christina Lewicky-Gaupp
Fiona Lindo
Frank Ling
Robert Lobel
Jaime Long
Svjjetlana Lozo
Joyce Lowman
Emily Lukacz
Michael Maddox
Annetta Madsen
Erin Maetzold
Sangeeta Mahajan
Beth Malizia
Saifuddin Mama
Mamta Mamik
Jeffrey Mangel
Rebecca Margulies
Andrea Mariani
Lori Marshall
Marisa Mastropietro
J. Kyle Mathews
Kristen Matteson
Paul McChristian

George McClure
Brook McFadden
Mary T. McLennan
S. Gene McNeeley
Carlos A. Medina
Rodney Meeks
Renee Mestad
David Menapace
Shawn Menefee
Renee Mestad
John Miklos
Dennis Miller
Jay-James Miller
Jeannine Miranne
Kavita Mishra
Stephanie Molden
Ignacio Montoya
Daniel Morgan
Michelle Morrill
Abraham Morse
Elizabeth Mueller
Lidia Myung
John Nealson
Elham Neisani Samani
Aimee Nguyen
Mikio Nihira
Cara Ninivaggio
Michael Noone
Gina Northington
Peggy Norton
Patrick Nosti
Ingrid Nygaard
Susan Oakley
Dale O'Brien
Amy O'Boyle
John Occhino
Cedric Olivera
Francisco Orejuela
Apurva Pancholy
Alison Parden

Donor information as of February 15, 2020



SHARE

Surgeons Helping Advance Research & Education

Patron - \$1 - \$999 *continued*

Candice Parker-Autry
Grace Patton
Rachel Pauls
Paul D. Pettit
Anna Pilzek
Antonio Pizarro
Karl C. Podratz
Samantha Pulliam
Lieschen Quiroz
Jim Radars
Arash Rahi
David Rahn
George Ralph
Olga Ramm
Lise Rehwaldt
Lee Richter
Leslie Rickey
John W. Riggs
Noah Rindos
Jeanette Rivera
James Robinson
Marcella L. Roennburg
Norman G. Rosenblum
Amy Rosenman
Teresa Rutledge
Amanda Sadecky
Joy Saini
Cristina Saiz
Katherine Sandhu
Tatiana Sansas
Joseph Schaffer
Stacey Scheib
Megan Schimpf
William Schlaff
Jennifer Schmitt
Miriam Seitz
Saya Segal
William Seifert

Sangeeta Senapati
Jonathan Shepherd
Abbas Shobeiri
David Shveiky
Sohail Siddique
Ruchira Singh
Anita Sit
Ambereen Sleemi
Paul Slocum
Scott W. Smilen
Benjamin Smith
Carl Smith
Melissa W. Smith
Katelyn Smithling
Andrew Sokol
Arlene Song
Karen Soules
Edward Stanford
Ryan Stratford
Thomas G. Stovall
Christopher Strauchon
Mallory Stuparich
Rabiya Suleman
Carmen Sultana
Kimberly Swan
Carolyn Swenson
Karl F. Tamussino
Javana Tavcar
Bernard Taylor
Betsy Taylor
James P. Theofrastous
Jennifer Thompson
Mike Ting
Janet Tomezsko
Emanuel Trabuco
Alexis May Tran
Elisa Trowbridge
Mireille Truong

John W. Utrie, Jr.
Babak Vakili
Louise van der Does
Heather van Raalte
Julia VanRooyen
Brett Vassallo
Anthony G. Visco
Katherine Volpe
Andy Vu
Cliff Wai
Briana Walton
K. Wang
Renee Ward
Blair Washington
Richard Wasserman
Megan Wasson
Alison Weidner
Lauren Westerman
Thomas Wheeler
James Whiteside
Cecilia Wieslander
Heather Willis
Harvey Winkler
Anne K. Wiskind
Joshua Woelk
Kyle Wohlrab
Hugh Wolcott
Sabrina Wyatt
Allison Wyman
Jennifer Yeung
Johnny Yi
Ladin Yurteri-Kaplan
Wong T. Zheng
Dani Zoorob
Halina Zyczynski



SHARE

Surgeons Helping Advance Research & Education

Michael P. Aronson, MD, Fund Donors

Rony Adam
Arnold Advincula
Mallika Anand
David Aronson
Michael P. Aronson Family
James L. Breen
Linda Brubaker
Peter Bulla
Andrew Cassidenti
Ralph Chesson
Jeffrey Clemons
Jeffrey L. Cornella
Patrick Culligan
John O. L. DeLancey
Peter Drewes
Mark Ellerkmann
Elisabeth Erikson
Dee Fenner
Nancy Frankel and
Lennie Siegel
John Gebhart
Dobie Giles
Elliot Greenberg
Douglass Hale
Wesley Hilger

Nicolette Horbach
Abner P. Korn
Stephen Metz
Michael Moen
Deborah Myers
Wesley Hilger
Lennox Hoyte
William W. Hurd
Lisa Johnson
Kathy Jones
Scott Kambiss
Padma Kandadai
Mickey Karram
Kimberly Kenton
Ernest I. Kohorn
Yoko Komesu
Abner P. Korn
LABORIE
Christine LaSala
Melinda Letterman
Jaime Long
Michael Maddox
Sangeeta Mahajan
Arnulfo Martinez
George McClure

Stephen Metz
Michael Moen
Mikio A. Nihira
Thomas E. Nolan
Michael Noone
Holly E. Richter
Rebecca Rogers
Robert Rogers
Amy Rosenman
Joy Saini
Tatiana Sanses
Bob Shull
William Schlaff
Mitchell Schuster
Kris Strohbehm
Carmen Sultana
Vivian Sung
Bernard Taylor
R. Edward Varner
Andrew J. Walter
Blair Washington
Emily Weber LeBrun
Anne K. Wiskind

Donor information as of February 15, 2020



SHARE

Surgeons Helping Advance Research & Education

Donald G. Gallup, MD, Fund Donors

Scott Bailey
Heather Barbier
Andrew Cassidenti
Ralph R. Chesson
Sean Francis
Rajiv Gala
Ed & Deborah Gallup
Pam Gallup Gaudry
Denise Elser
Harriette Hampton
LaFloyd and Elaine Hobbs
Melinda Letterman
Michael Maddox
Javier Magrina
Paul McChristian
Stephen Metz
Michael Moen
Thomas E. Nolan
Peggy Norton
Karl C. Podratz
John W. Riggs
William Seifert
Mitchell Schuster
Bob Shull
Carl Smith
Joe T. Stubbs
Bernard Taylor
R. Edward Varner
Sheldon Weinstein
Hugh Wolcott

Donor information as of February 15, 2020



SHARE

Surgeons Helping Advance Research & Education

John O. L. DeLancey, MD, Fund Donors

W. Allen Addison
Mallika Anand
James L. Breen
Andrew Cassidenti
Jeffrey Clemons
Jeffrey L. Cornella
Marlene Corton
John O. L. DeLancey
Denise Elser
Rajiv Gala
John Gebhart
William W. Hurd
Cheryl Iglesias
Peter Jeppson
Gregory Kanter
Anuradha Koduri
Yuko Komesu
S. Robert Kovac
Bela Kudish
Felicia Lane
Wilma Larsen
Melinda Letterman
Vincent Lucente
Michael Maddox
Arnulfo Martinez

George B. McClure
G. Rodney Meeks
Stephen Metz
Michael Moen
Miles Murphy
Deborah Myers
Mikio A. Nihira
Cara Ninivaggio
Thomas E. Nolan
Ingrid Nygaard
Cedric Olivera
Lisa M. Peacock
Robert M. Rogers
Rebecca Rogers
Peter L. Rosenblatt
Mitchell Schuster
Bob Shull
Kris Strohbehn
Marc Toggia
Heather van Raalte
L. Lewis Wall
Andrew J. Walter
Mark D. Walters
Michael Woods
Carl Zimmerman

Donor information as of February 15, 2020



David H. Nichols, MD, Fund Donors

Cassandra Carberry
Jeffrey Clemons
Rajiv Gala
John Gebhart
Seth Finkelstein
Charles Hanes
Michael Moen
Deborah Myers
Simon Patton
Lisa Peacock
Robert Rogers
Dionysios K Veronikis
Andrew Walter
Renee Ward
Michael Woods

Donor information as of February 15, 2020



SHARE

Surgeons Helping Advance Research & Education

Donors to CoRPS Fund in Honor of Drs. Cheryl Iglesia, Kimberly Kenton, and Holly E. Richter

Melinda Abernethy
Pakeeza Alam
Danielle Antosh
Katarzyna Bochenska
Heidi Brown
Sarah Collins
David Ellington
Jocelyn Fitzgerald
Cynthia Fok
Jonathan Gleason
Cara Grimes
Bhumy Heliker
Cheryl Iglesia
Jana Illston
Kimberly Kenton
Fareesa Khan
Alix Komar
Bela Kudish
Christina Lewicky-Gaup
Emily Lukacz
Kate Meriwether
Vadim Morozov
Elizabeth Mueller
Maggie Mueller
Miles Murphy
Amy Park
Thythy Pham
Olga Ramm
Holly E. Richter
Leslie Rickey
David Shveiky
Katelyn Smithling
Andrew Sokol
Megan Tarr

Donor information as of February 15, 2020



SHARE

Surgeons Helping Advance Research & Education

Donors to Mark D. Walters, MD Endowed Lecture

Marc Ashby
Humphrey Atiemu
Matthew Barber
Linda Bradley
Emi Bretschneider
Viviana Casas-Puig
Andrew Cassidenti
Olivia Chang
Chi Chung Grace Chen
Sarah Collins
Emily Davidson
Gouri Diwadkar
Cleveland Clinic OB/GYN
and Women's Health Institute
Tommaso Falcone
Cecile Ferrando
Foundation for Female Health Awareness
Anna Frick
John Gebhart
Lisa Hickman
Audra Jo Hill
Cheryl Iglesia
Michael Ingber
Karl Jallad
John Jelovsek
Peter Jeppson
Mickey M. Karram
Rosanne Kho
Shunaha Kim-Fine
Nathan Kow

Arnulfo Martinez
Catherine Matthews
Douglas Miyazaki
Michael Moen
Tyler Muffly
Tristi Muir
Marie Fidela Paraiso
Amy Park
Cheryl Perrero
Katie Propst
Beri Ridgeway
Peter Rosenblatt
Carlos Sarsotti
Nazema Siddiqui
Lauren Siff
Andrew Sokol
Ellen Solomon
Kevin Stepp
Megan Tarr
Tonya Thomas
Paul Tulikangas
Elena Tunitsky-Bitton
Sandip Vasavada
Virginia Walters
Emily Weber LeBrun
James Whiteside
Kate Woodburn
Angel Yuan



SHARE

Surgeons Helping Advance Research & Education

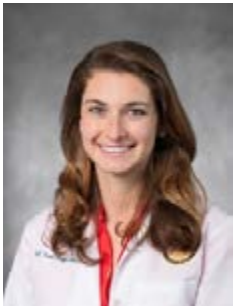
Michael P. Aronson Educational Scholarship Recipients



Claire Schultz, MD

Clinical Instructor

Denver Health Medical Center



Sarah L. Kluck, MD

Assistant Clinical Professor

University of California San Diego



Felicia L. Hamilton, MD

Associate Residency Program Director

MedStar Washington Hospital Center

SGS Membership

Active Members

Husam Abed, MD 2015

555 Midtowne St NE
Grand Rapids, MI 49503
616-588-1200
abedgh@yahoo.com

Mauricio Abrao, PhD, MD 2018

Rua Sao Sebastiao 550 - Chacara Santo
Antonio
Sao Paulo, SP, Brazil 04708-001
msabrao@mac.com

Allan Adajar, MD 2019

1351 W Belmont Ave
Chicago, IL 60657
312-785-8881
adajarmd@advpelvicsurgery.com

Rony Adam, MD 2000

Vanderbilt University Medical Center
Nashville, TN 37232
615-322-8968
rony.a.adam@vumc.org

Arnold Advincula, MD 2006

622 West 168th Street
New York, NY 10032
212-305-0189
aa3530@cumc.columbia.edu

Thomas Aigmuller, MD 2016

Auenbruggerplatz 14
Graz, Austria 8036
aigmuller@gmail.com

Cindy Amundsen, MD 2000

Duke Univ. Medical Center
Durham, NC 27707
919-401-1001
cindy.amundsen@duke.edu

Mallika Anand, MD 2017

330 Brookline Ave, Kirstein 3rd Flr
Boston, MA 02215
617-667-4165
mallika.anand.md@gmail.com

Danielle Antosh, MD 2016

6550 Fannin, Suite 2221
Houston, TX 77030
713-441-5800
ddantosh@houstonmethodist.org

Lily A. Arya, MD 2009

1000 Courtyard 3400 Spruce Street
Philadelphia, PA 19104
Larya@obgyn.upenn.edu

Charles Ascher-Walsh, MD 2010

Mt. Sinai Hospital / Dept. OB.GYN
New York, NY 10029
212-241-7809
charles.ascher-walsh@mssm.edu

Arnim Bader, MD 2009

Medical University of Graz
Graz, Austria A-8036
+43 316-385-81435
arnim.bader@medunigraz.at

Tieneka Baker, MD 2017

3551 Roger Brooke Drive
Ft Sam Houston, TX 78234
210-916-2168
tieneka.baker@gmail.com

Sunil Balgobin, MD 2012

5323 Harry Hines Blvd.
Dallas, TX 75390-9032
214-648-6430
sunil.balgobin@utsouthwestern.edu

Active Members

Matthew Barber, MD 2007
Box 3084, 203 Baker House
Durham, NC 27710
919-668-3948
matthew.barber@duke.edu

Heather Barbier, MD 2017
4700 N Las Vegas Blvd
Nellis AFB, NV 89191
702-653-2300
hbarbier@mac.com

Matthew Barker, MD 2017
1417 S Cliff Ave Plaza 1 Suite 101
Sioux Falls, SD 57105
605-322-6700
Matthew.Barker@avera.org

Rebecca Batalden, MD 2018
5050 NE Hoyt Street
Portland, OR 97213
503-297-4123
rbatalden@orclinic.com

Joan M. Bengtson, MD 1995
Brigham & Women's Hospital
Chestnut Hill, MA 02467
617-732-9300
jrbengtson@partners.org

Todd Beste, MD 2009
2131 S. 17th Street
Wilmington, NC 28402
910-762-9093
Todd.Beste@nhrmc.org

Megan Billow, DO 2016
11100 Euclid Avenue
Cleveland, OH 44106
216-844-1000
meganbillow1@gmail.com

Roberta Blandon, MD 2012
136 N Ellsworth St
Naperville, IL 60540
816-225-5987
rblandon@gmail.com

Joan Blomquist, MD 2014
6569 North Charles Street
Baltimore, MD 21204
443-849-2767
jblomqui@gbmc.org

Michael Bonidie, MD 2006
300 Halket Street
Pittsburgh, PA 15213
412-641-1400
bonidiej@upmc.edu

C. Bryce Bowling, MD 2012
1930 Alcoa Highway, Suite A-235
Knoxville, TN 37920
865-305-5940
cbbowlingmd@gmail.com

Sarah Boyles, MD 2009
9155 SW Barnes Road, Suite 634
Portland, OR 97225
503-297-4123
sboyles@orclinic.com

Catherine Bradley, MD 2008
Dept. OB/GYN, 200 Hawkins Dr,
51217 PFP
Iowa City, IA 52242
319-356-1534
catherine-bradley@uiowa.edu

Richard C. Bump, MD 1989
131 Cub Highland
Nellysford, VA 22958
434-361-1824
rcbump0621@gmail.com

Active Members

Kristina Butler, MD, M.Sc. 2017

5777 East Mayo Blvd
phoenix, AZ 85054
480-342-2499
butler.kristina@mayo.edu

David B. Byck, MD 1995

Memorial Medical Center
Savannah, GA 31404
912-350-5935
david.byck@hcahealthcare.com

Andrew Cassidenti, MD 2012

9300 Stockdale #100
Bakersfield, CA 93311
661-664-2200
abruin4ev@aol.com

Lisa Chao, MD 2019

5323 Harry Hines Blvd.
Dallas, TX 75390
214-648-7211
lisa.chao@utsouthwestern.edu

Chi Chiung Grace Chen, MD 2012

301 Building Room 3118
Baltimore, MD 21224
410-550-2787
cchen127@jhmi.edud

Ralph R. Chesson, MD 1995

3601 Houma Blvd Suite 203
Metairie, LA 70006
504-412-1650
rchess@lsuhsc.edu

Hilary Cholhan, MD 1995

500 Helendale Road Suite 265
Rochester, NY 14609
585-266-2360
boxsterone@frontiernet.net

Woojin Chong, MD 2019

2950 College Drive, Suite 2A
Vineland, NJ 08360
856-641-8680
wwwwojin@gmail.com

C. Sage Claydon, MD 2010

200 Bowman Dr
Voorhees, NJ 08043
856-247-7420
info@drclaydon.com

Jeffrey Clemons, MD 2005

MultiCare Health System
1901 S. Union Ave
Tacoma, WA 98405
253-301-5120
drclemons@yahoo.com

Sarah Collins, MD 2015

250 E. Superior St
Chicago, IL 60611
312-472-3874
Sarah.collins@nm.org

Jeffrey L. Cornella, MD 1995

Mayo Clinic
Phoenix, AZ 85054
480-342-2867
cornella.jeffrey@mayo.edu

Marlene Corton, MD, M.Sc. 2011

5323 Harry Hines Boulevard
Dallas, TX 75390
214-648-6430
marlene.corton@utsouthwestern.edu

Catrina Crisp, MS, M.Sc. 2016

3219 Clifton Avenue
Cincinnati, OH 45220
513-862-4171
catrina_crisp@trihealth.com

Active Members

Andrew Croak, DO 2014

28442 East River Road Suite 111
Perrysburg, OH 43551
419-893-7134
acroak@nwourogyn.com

Patrick Culligan, MD 2003

61 Garfield Ave, 9th Flr F9-west
Madison, NJ 07940
201-259-7197
patrick.culligan@mybladderMD.com

Geoffrey W. Cundiff, MD 1998

1125 Howe St, Suite 930
Vancouver, BC, Canada V6Z1K8
604-806-9966
geoff.cundiff@gmail.com

John O.L. DeLancey, MD 1986

Dept. OB/GYN, Room L4100 WH 1500
E. Medical Center Drive
Ann Arbor, MI 48109
734-647-5866
delancey@med.umich.edu

Christopher DeStephano, MD 2020

4500 San Pablo Dr
Jacksonville, FL
904-953-2230
Destephano.christopher@mayo.edu

Nicolette Deveneau, MD 2017

2350 North Lake Drive Suite 504
Milwaukee, WI 53211
414-289-9668
ndeveneau@gmail.com

Michael Diamond, MD 1990

1120 15th Street
Augusta, GA 30912
706-721-9771
michael.diamond@augusta.edu

Alexis Dieter, MD 2020

3032 Old Clinic Building, CB #7570
Chapel Hill, NC
919-966-4717
alexis_dieter@med.unc.edu

Nicole Donnellan, MD 2016

Magee-Womens Hospital
300 Halket St
Pittsburgh, PA 15213
412-641-8769
donnellann2@upmc.edu

Sean C. Dowdy, MD 2009

Mayo Clinic 200 First Street, SW
Rochester, MN 55905
507-266-0225
dowdy.sean@mayo.edu

Keith Downing, MD 2018

661 Deer Park Avenue
Babylon, NY 11702
631-376-3880
Kdowning4@gmail.com

Paula Doyle, MD 2017

601 Elmwood Avenue Box 668
Rochester, NY 14642
585-487-3400
paula_doyle@urmc.rochester.edu

Peter Drewes, MD 2007

585 North 500 West
Provo, UT 84601
801-374-1801
drewes@valleywomenshealth.com

Gena Dunivan, MD 2013

University of New Mexico
Albuquerque, NM 87131
505-272-9712
gdunivan@salud.unm.edu

Active Members

Terry S. Dunn, MD 2009
850 E. Harvard Ave Suite 285
Denver, CO 80210
303-653-6752
tdunmd@urogyns.com

Thinh H. Duong, MD 2009
1701 E Cesar E Chavez Ave
Los Angeles, CA 90033
323-225-4300
thdmd@yahoo.com

Karolynn Echols, MD 2016
833 Chestnut St, 1st floor
Philadelphia, PA 19106
215-955-5000
karolynnechols@me.com

Renee Edwards, MD 2003
3181 SW Sam Jackson Park Rd.
Mailcode CR9-6
Portland, OR 97239
503-494-4088
edwardre@ohsu.edu

Eman Elkadry, MD 2004
725 Concord Avenue
Cambridge, MA 02138
617-354-5452
eelkadry@mah.harvard.edu

Mark Ellerkmann, MD 2016
Weinberg Center for Women's Health
Baltimore, MD 21202
443-275-5050
mellerkm@mdmercy.com

David Ellington, MD 2017
10382 Women's & Infants Center 1700
6th Av South
Birmingham, AL 35233
205-975-3587
davidelling@gmail.com

Sherif El-Nashar, MD 2019
11100 Euclid Ave
Cleveland, OH 44106
507-254-4215
elnashar.sherif@gmail.com

Denise Elser, MD 2001
5851 W. 95th Street
Oaklawn, IL 60453
708-499-9800
delser@whii.org

Elisabeth Erekson, MD 2013
1 Medical Center Drive
Lebanon, NH 03766
603-653-9250
Elisabeth.D.Erekson@hitchcock.org

Elizabeth Evans, MD 2018
7703 Floyd Curl Drive
San Antonio, TX 78229
210-567-5051
casianoe@uthscsa.edu

John Fantl, MD Charter
Mount Sinai- Beth Israel Medical
New York, NY 10003
631-277-6619
fantlja1@gmail.com

Tola Fashokun, MD 2015
Sinai Hospital of Baltimore
Baltimore, MD 21215
410-601-2523
tfashoku@lifebridgehealth.org

Abdalla Fayyad, MD 2013
Yasmeen Medical Centre
12 Ibn Khaldoun St
Amman, JOR 11181
amfayyad@gmail.com

Active Members

Dee E. Fenner, MD 1995

Dept. OB/GYN 1500 F. Medical Center
Dr, L4000 Women's Hospital
Ann Arbor, MI 48109
734-647-5866
deef@umich.edu

Cecile Ferrando, MD 2019

9500 Euclid Ave/A81
Cleveland, OH 44195
216-444-0642
Cecile.a.ferrando@gmail.com

Robert Flora, MD, MPH 2015

One McLaren Parkway
Grand Blanc, MI 48439
810-342-3650
robert.flora@mclaren.org

Maria Florian-Rodriquez, MD 2020

5323 Harry Hines Blvd
Dallas, TX 75390
214-648-6430
mariaflorian@gmail.com

Raymond Foster, MD 2014

500 N. Keene St Ste 306
Columbia, MO 65201
573-999-3268
fosterrt@health.missouri.edu

Sean Francis, MD 2016

401 E. Chestnut St, Ste 470
Louisville, KY 40202
502-561-7441
seanf000@gmail.com

Arnold Friedman, MD 1988

967 48th Street
Brooklyn, N 11219
718-283-886
ajfriedman@maimonidesmed.org

Rajiv Gala, MD 2009

Ochsner Medical Center
New Orleans, LA 70115
504-842-6680
rgala@ochsner.org

John Gebhart, MD 2006

Mayo Clinic - OB/GYN
Rochester, MN 55905
507-266-7711
gebhart.john@mayo.edu

Elizabeth Geller 2014

CB 7570 Old Clinic
Chapel Hill, NC 27599
919-966-4714
egeller@med.unc.edu

Rene Genadry, MD 1992

200 Hawkins Drive, 51233 PFP
Iowa City, IA 52242
319-356-2306
rene-genadry@uiowa.edu

Mohamed Ghafar, MD 2014

9 Roseanne
Woodbury, NY 11797
646-508-9166
mghafar2@gmail.com

Dobie Giles, MD 2015

202 South Park St
Madison, WI 53715
608-720-5212
giles2@wisc.edu

Meadow Good, DO 2017

653-1 West 8th Street
Jacksonville, FL 32209
904-244-3109
meadow.good@jax.ufl.edu

Active Members

Elliot Greenberg, MD 2015

3455 Main St
Springfield, MA 01107
413-794-8484
elliottgreenbergmd@gmail.com

Cara Grimes, MD 2016

19 Bradhurst Avenue
Hawthorne, NY 10532
914-493-2255
caragrimesmd@gmail.com

Daniel Gruber, MD, M.Sc. 2013

11815 Prestwick Rd.
Potomac, MD 20854
301-400-2685
ddgruber1@gmail.com

Robert Gutman, MD 2009

MedStar Washington Hospital Center
Washington, DC 20010
202-877-6526
Robert.E.Gutman@medstar.net

Douglass Hale, MD 2006

IUH Urogynecology
Carmel, IN 46032
317-688-3700
dhale@iuhealth.org

Brittany Star Hampton, MD 2009

101 Plain Street
Providence, RI 02903
401-453-7560
bhampton@wihri.org

Charles Hanes, MD 2006

251 Cox St
Mobile, AL 36604
251-338-1234
hanes@urogynsa.com

Gerald Harkins, MD 2016

500 University Drive Po Box 850, H103
Hershey, PA 17033
717-531-6447
gharkins@pennstatehealth.psu.edu

Oz Harmanli, MD 2004

330 Cedar Street, Dept. of
OB/GYN/RS, Ste FMB 329B
New Haven, CT 06510
203-785-6927
oz.harmanli@yale.edu

Wesley J. Harris, MD 2000

Bristol GYN and OB
Bristol, TN 37620
423-968-3033
ickharris1@gmail.com

Robert Harris, MD 2003

501 Marshall St
Jackson, MS 39202
601-948-6540
rharris@seug.com

Heidi Harvie, MD 2018

3400 Spruce St
Philadelphia, PA 19104
215-829-2345
hharvie@obgyn.upenn.edu

Christine Heisler, MD 2012

600 Highland Ave
Madison, WI 53792
616-206-5016
cheisler2009@gmail.com

Michael Heit, MD 2000

11725 N Illinois St, Suite 140
Carmel, IN 46032
317-966-3700
mheit@iuhealth.org

Active Members

Wesley Hilger, MD 2009

2801 K St #200
Sacramento, CA 95816
916-779-1160
whilger@hotmail.com

Robert L. Holley, MD 2001

P.O. Box 59707
Birmingham, AL 35259
pilut0713@gmail.com

Adam Holzberg, DO 2010

42 E. Laurel Road
Stratford, NJ 08084
856-566-7093
adholzberg@gmail.com

Michael Hopkins, MD 1999

2600 Tuscarawas St W. #420
Canton, OH 44708
330-994-1280
michael.hopkins@aultman.com

Nicolette S. Horbach, MD 1997

3289 Woodburn Road, Suite 130
Annandale, VA 22003
571-389-7140
nhorbach@aol.com

Ira R. Horowitz, MD 1995

1365 Clifton Road, NE Bldg. A,
Suite 5016
Atlanta, GA 30322
ihorowi@emory.edu

Sara Houlihan, MD 2020

302-301 E Columbia St
New Westminster, BC V3L 3W5
604-553-0719
houlihan@ualberta.ca

Denise Howard, MD 2005

100 N Academy Ave, MC29-20
Danville, PA 17822
570-271-6296
Dhoward1@geisinger.edu

Lennox Hoyte, MD 2006

3225 S. Macdill Ave, #129-307
Tampa, FL 33629
813-551-3540
lennox@mindspring.com

Yvonne Hsu, MD 2010

Intermountain Healthcare
Salt Lake City, UT 84132
801-408-7500
yvonne.hsu@imail.org

Hye-Chun Hur, MD, MPH 2016

622 West 168th Street
New York, NY 10032
212-305-0189
hh2760@cumc.columbia.edu

Cheryl Iglesia, MD 2008

106 Irving Street NW, Suite 405 S.
Washington, DC 20010
202-877-6526
cheryl.iglesia@medstar.net

Jana Illston, MD 2020

5780 Peachtree Dunwoody Rd
Suite 295
Atlanta, GA 30342
404-255-0612
janailston@gmail.com

Karl Jallad, MD 2018

Zahar Street
Beirut, Lebanon 11-3288
917-855-4404
karljallad@gmail.com

Active Members

Peter Jeppson, MD 2016

2211 Lomas Blvd NE 4th Floor
Albuquerque, NM 87131
505-272-6380
peterjeppson@gmail.com

Lisa Johnson, MD 2016

5851 W. 95th Street
Oak Lawn, IL 60453
708-499-9800
LCLabin@hotmail.com

Margie Kahn, MD 2006

Dept. OB/GYN
New Orleans, LA 70112
504-988-8070
margiekahn@msn.com

Sarah Kane, MD 2015

Suite 307 Norton Medical Plaza III
Louisville, KY 40207
502-409-5600
skaneliu@yahoo.com

Gregory Kanter, MD 2019

254 San Jose St
Salinas, CA 93901
831-758-8223
greggkanter@gmail.com

Mickey M. Karram, MD 1993

The Christ Hospital
Cincinnati, OH 45219
513-585-3474
mickey.karram@thechristhospital.com

Sesh Kasturi, MD 2015

2801 K Street
Sacramento, CA 95816
916-779-1166
seshkasturi@yahoo.com

Kristinell Keil, MD 2007

4600 Hale Parkway #350
Denver, CO 80220
303-503-9895
kky@keilurogynecology.com

Kimberly Kenton, MD 2005

Dept. OB/GYN 250 East Superior
Chicago, IL 60611
312-472-3874
kkenton@nm.org

Rosanne Kho, MD 2015

9500 Euclid Ave
Cleveland, OH 44116
216-444 -6337
sahnmd@gmail.com

Kimberly Kho, MD 2018

5323 Harry Hines Boulevard
Dallas, TX 75390
214-648-6430
kimberly.kho@utsouthwestern.edu

Shunaha Kim-Fine, MD 2019

4th Floor North Tower
1403 29th Street NW
Calgary, AB, Canada AB T2N 2T9
587-352-9956
Skima29@gmail.com

Cara King, DO 2016

600 Highland Avenue
Madison, WI 53792
608-263-6408
cararobinsonking@gmail.com

Steven D. Kleeman, MD 2007

3219 Clifton
Cincinnati, OH 54220
513-862-4171
steven_kleeman@trihealth.com

Active Members

John Knaus, DO 1993

5747 W. Dempster, Suite 100
Morton Grove, IL 60053
847-663-1030
jknaus007@gmail.com

Yuko Komesu, MD 2009

Dept. OB/GYN 2211 Lomas Blvd., NE
Albuquerque, NM 87131
505-272-6667
ykomesu@salud.unm.edu

Nicole Korbly, MD 2017

101 Plain St, 5th Fl
Providence, RI 02905
401-453-7560
nbkorbly@gmail.com

Abner P. Korn, MD 2003

1001 Potrero Ave, Rm 6D-17
San Francisco, CA 94110
415-206-5108
korna@obgyn.ucsf.edu

Bela Kudish, MD 2014

1178 Cypress Glen Circle
Kissimmee, FL 34741
407-982-4852
bela@belavidaurogynecology.com

Soo Kwon, MD 2020

969 Park Ave
New York, NY 10128
708-508-1566
s_kwon@hotmail.com

Felicia Lane, MD 2017

333 City Blvd West Suite 1400
Orange, CA 92868
714-456-8564
fgeas@uci.edu

Wilma Larsen, MD 2005

2915 Vine St
Dallas, TX 75204
214-871-1619
wlarsen@abog.org

Christine LaSala, MD 2008

Hartford Hospital 85 Seymour St,
Suite 525
Hartford, CT 06106
860-972-4338
christine.lasala@hhchealth.org

Edgar LeClaire, MD 2019

800 S.L. Young Blvd.
Oklahoma City, OK 73014
405-271-8787
edgar-leclaire@ouhsc.edu

Ted Lee, MD 2009

300 Halket Street
Pittsburgh, PA 15213
412-641-4245
tlee@mail.magee.edu

Gretchen Lentz, MD 2006

BB-644 HSC Box 356460, 1959 NE
Pacific ST
Seattle, WA 98195
206-685-9640
gretchen@u.washington.edu

Veronica Lerner, MD 2020

1300 Morris Park Ave
Bronx, NY 10461
718-405-8200
Lernervt01@yahoo.com

Barbara Levy, MD 2014

409 12th Street, SW
Washington, DC 20024
253-740-7350
drbarblevy@gmail.com

Active Members

Christina Lewicky-Gaup, MD 2015

250 E. Superior
Chicago, IL 60611
312-926-4747
clewicky@nm.org

Janet Li, MD 2016

1250 Hancock Street
Quincy, MA 02169
617-774-0940
janetli2000@gmail.com

Fiona Lindo, MD, MPH 2018

10130 Louetta Rd Suite G
Houston, TX 77070
832-698-5520
feelindomd@gmail.com

Frank Ling, MD 1993

7800 Wolf Trail Cove
Germantown, TN 38138
fling@whsobbgyn.com

Gary H. Lipscomb, MD 1993

1301 Primacy Parkway
Memphis, TN 38119
901-448-0240
garyhlipscomb@gmail.com

Ernest G. Lockrow, DO 2003

4608 Saul Road
Kensington, MD 20895
301-295-2270
erneStlockrow@usuhs.edu

Jaime Long, MD 2013

500 University Dr
Hershey, PA 17033
717-531-3503
jlong19@pennstatehealth.psu.edu

Vincent R. Lucente, MD 1998

3050 Hamilton Blvd., Suite 200
Allentown, PA 18103
610-435-9575
vlucente@fpmiinstitute.com

Annetta Madsen, MD 2020

347 N Smith Ave, Suite 203
St Paul, MN 55102
651-241-7733
annettamad@gmail.com

Paul Magtibay, MD 2006

Mayo Clinic Arizona
Phoenix, AZ 85054
480-342-2499
magtibay.paul@mayo.edu

Sangeeta Mahajan, MD 2011

11100 Euclid Ave, MAC 5034
Cleveland, OH 44106
216-844-4906
sangeeta.mahajan@UHhospitals.org

Pedro Maldonado, MD 2018

4801 Alberta Avenue
El Paso, TX 79905
915-215-4651
pedro.maldonado@ttuhsc.edu

Saifuddin Mama, MD, MPH 2015

6012 Main Street
Voorhees, NJ 08043
856-325-6622
mama-saifuddin@cooperhealth.edu

Mamta Mamik, MD 2015

1400 Pelham Pkwy
New York, NY 10461
mamta.mamik@gmail.com

Active Members

Jeffrey Mangel, MD 2011

Metrohealth Medical Center
Cleveland, OH 44109
216-778-4444
jmangel@metrohealth.org

Rebecca Margulies, MD 2016

275 West MacArthur Blvd
Oakland, CA 94611
510-752-8199
rebecca.margulies@gmail.com

Arnulfo Martinez, MD 2014

Av. Hidalgo 2425-903
Monterrey, Mexico 64060
52-181-831-86947
amch@cmhidalgo.com

Kristen Matteson, MD 2013

Womens & Infants Hospital
Providence, RI 02905
401-274-1122
kmatteson@wihri.org

Catherine Matthews, MD 2011

1 Medical Center Blvd.
Winston-Salem, NC 27157
336-716-4310
camatthe@wakehealth.edu

George B. McClure, MD 2003

MultiCare UroGynecology
Tacoma, WA 98405
253 301-5120
georgebmc@comcaStnet

Anna McNanley, MD 2015

9855 Hospital Drive
Maple Grove, MN 55369
952-993-6736
mcna@mac.com

Shawn Menefee, MD 2011

3250 Fordham street
San Diego, CA 92120
619-221-6398
menefeekp@gmail.com

Kate Meriwether, MD 2017

2211 Lomas, 4th Floor
Albuquerque, NM 87106
503-380-1123
meriwet2@gmail.com

Isuzu Meyer, MD 2020

619 19th St South, 176F Ste 10382
Birmingham, AL 35249
205-934-1704
lmeyer@uabmc.edu

John R. Miklos, MD 2003

3400-C Old Milton Pkwy. #330
Alpharetta, GA 30005
770-475-4499
johnrmiklos@yahoo.com

Magdy Milad, MD 2017

250 East Superior
Chicago, IL 60611
312-472-4686
mmilad@nm.org

Kevin Miller, MD 2019

3232 E. Murdock
Wichita, KS 67208
315-219-6777
kmiller@awhobgyn.com

Steven M. Minaglia, MD 2008

1319 Punahou St
Honolulu, HI 96826
minaglia@hawaii.edu

Active Members

Jeannine Miranne, MD 2019

500 Brookline Ave, Suite E
Boston, MA 02115
617-732-4838
jmiranne@bwh.harvard.edu

Douglas Miyazaki, MD 2015

321 Stanaford Rd
winston salem, NC 27104
336-414-2462
dm@miyazakienterprises.com

Michael Moen, MD 2003

1875 Dempster Street
Park Ridge, IL 60068
847-825-1590
michael.moen@advocatehealth.com

Stephanie Molden, MD 2012

760 Newtown Yardley Road
Newtown, PA 18940
215-860-2454
smolden@fphcenter.com

Paul Moore, MD 2020

2500 North State Street
Jackson, MS 39216
601-984-5306
Pmoore3@umc.edu

Daniel Morgan, MD 2017

1500 E. Medical Center Dr
Ann Arbor, MI 48109
734-647-5866
morgand@umich.edu

Michelle Morrill, MD 2016

2238 Geary Blvd, 7SW
San Francisco, CA 94115
415-833-3438
mymorrill@gmail.com

Abraham Morse, MD 2003

106 Brook St
Brookline, MA 02445
508-243-7396
anmorse@me.com

Maggie Mueller, MD 2018

250 E Superior St, Suite 5-2370
Chicago, IL 60611
312-472-3874
margaret.mueller@nm.org

Tyler Muffly, MD 2015

777 Bannock Street
Denver, CO 80204
720-810-9863
tyler.muffly@dhha.org

Miles Murphy, MD 2008

1010 Horsham Road
North Wales, PA 19454
215-855-4713
milesmurphy@comcaStnet

Deborah Myers, MD 2000

101 Plain Street
Providence, RI 02905
401-274-1122
dmyers@wihri.org

Charles Nager, MD 2005

9300 Campus Point Dr
La Jolla, CA 92037
858-657-8631
cnager@ucsd.edu

Mikio Nihira, MD 2005

19330 Jesse Ln, Suite 100
Yorba Linda, CA 92887
844-827-8000
mikio.nihira@medsch.ucr.edu

Active Members

Michael Noone, MD 2009

1875 Dempster St
Park Ridge, IL 60068
847-825-1590
michael.noone@advocatehealth.com

Gina Northington, PhD, MD 2016

The Emory Clinic, 1365 Clifton Road
Atlanta, GA 30322
404-778-3401
gina.northington@emory.edu

Peggy Norton, MD 1993

University of Utah Med. Ctr.
Salt Lake City, UT 84132
801-585-5532
peggy.norton@hsc.utah.edu

Patrick Nosti, MD 2017

8901 West 74th Street, Suite 280
Shawnee, KS 66204
913-262-3000
patrick.nosti@gmail.com

Susan Oakley, MD 2018

St Elizabeth Physicians - Urogynecology
Fort Thomas, KY 41071
859-757-2132
oakley.susan@gmail.com

Amy O'Boyle, MD 2010

4906 70th AVE CT W
University Place, WA 98467
360-486-6813
amyoboye@aol.com

John Occhino, MD 2016

200 First Street SW
Rochester, MN 55905
507-538-5883
Occhino.John@mayo.edu

Cedric Olivera, MD 2013

18 East 41st St
New York, NY 10017
732-740-4495
Cedric.olivera@mssm.edu

Francisco Orejuela, MD 2012

6651 Main St
Houston, TX 77030
832-826-7735
Francisco.Orejuela@bcm.edu

James Orr, Jr., MD 1986

8931 Colonial Center Dr
Fort Myers, FL 33905
jorr@rtsx.com

Marie Fidela Paraiso, MD 2003

The Cleveland Clinic Foundation
Cleveland, OH 44195
216-444-3428
paraism@ccf.org

Amy Park, MD 2013

9500 Euclid Ave, Desk A81
Cleveland, OH 44195
216-444-6601
parkamy@gmail.com

Alison M. Parden, MD 2019

3125 Independence Dr, Suite 200
Homewood, AL 35209
205-930-0920
aliparden@gmail.com

Danielle Patterson, MD 2014

4940 Eastern Ave
Baltimore, MD 21224
410-550-2787
dpatte33@jhmi.edu

Active Members

Rachel Pauls, MD 2014

3219 Clifton Ave Ste 100
Cincinnati, OH 45220
513-862-4171
Rachel_Pauls@trihealth.com

Lisa Peacock, MD 1998

1542 Tulane Avenue, 5th Floor, LSU
New Orleans, LA 70112
504-568-4850
lpeac1@lsuhsc.edu

Manuel A. Penalver, MD 1989

5000 University Dr
Coral Gables, FL 33146
mannypenalver@aol.com

Paul Pettit, MD 2000

Mayo Clinic, Jacksonville
Jacksonville, FL 32224
904-953-2977
lazyp64676@gmail.com

Thythy Pham 2020

2160 S First Ave
Maywood, IL 60153
708-216-2170
Thythy.pham@lumc.edu

Anna Pilzek, MD 2018

100 N Academy Dr
Danville, PA 17821
570-271-6364
alpilzek@geisinger.edu

Joseph F. Pohl, MD 1997

500 Medical Center Blvd. Suite 365
Lawrenceville, GA 30045
jpohls@comcast.net

Katie Propst, MD 2020

9500 Euclid Ave, Desk A-81
Cleveland, OH 44195
216-444-9398
propstk@ccf.org

David Quinlan, MD 2014

101 - 1964 Fort Street
Victoria, BC, Canada V8R6R3
250-595-1059
davidjquinlan@gmail.com

Gregory Raff, MD 2013

1481 W. 10th St
Indianapolis, IN 46202
317-988-4917
gjraff@iupui.edu

David Rahn, MD 2011

5323 Harry Hines Blvd.
Dallas, TX 75390
214-648-6433
david.rahn@utsouthwestern.edu

George Ralph, MD 2004

Dept. OB/GYN, Univ. of Graz
Graz, Austria 8010
433-638-3110
ralph1605@gmail.com

Charles R. Rardin, MD 2009

101 Plain Street 5th floor
Providence, RI 02905
401-430-8763
crardin@wihri.org

Monica Richardson, MD 2016

330 Brookline Ave
Boston, MA 02215
650-667-4070
monicalucero@gmail.com

Active Members

Holly E. Richter, PhD, MD 2004

1700 6th Av South, Suite 10382
Birmingham, AL 35233
205-934-1704
hrichter@uabmc.edu

Beri Ridgeway, MD 2016

9500 Euclid Avenue
Cleveland, OH 44195
216-445-7704
RIDGEWB@ccf.org

John W. Riggs, MD 2004

5656 Kelley
Houston, TX 77026
713-566-5041
john.w.riggs@uth.tmc.edu

Carla P. Roberts, PhD, MD 2001

1800 Northside Forsyth Dr, Suite 380
Cumming, GA 30041
770-292-2670
june.cagle@northside.com

James K. Robinson, MD 2019

106 Irving St, NW
Washington, DC 20001
202-877-6526
jimkrobinson3@gmail.com

Marcella L. Roenneburg, MD 2004

Eastern Shore OB/Gyn
Salisbury, MD 21804
410-546-2424
atlasofpelvicsurgery@gmail.com

Christina Rogers, DO 2020

5005 N Pierdras St
El Paso, TX 79920
816-308-0671
Christyrogers87@gmail.com

Robert M. Rogers, MD 1995

Kalispell Regional Medical Center
Kalispell, MT 59901
shirdoc@aol.com

Rebecca Rogers, MD 2001

1301 W 38th St
Austin, TX 78705
rebecca.rogers@austin.utexas.edu

Audrey Romero, MD 2016

101 Old Short Hills Road
West Orange, NJ 07052
919-451-5335
romeroaudrey@hotmail.com

Peter L. Rosenblatt, MD 2004

725 Concord Ave, Suite 1200
Cambridge, MA 02138
617-354-5452
plrosen@comcast.net

Norman Rosenblum, PhD, MD 1991

830 Primrose Lane
Wynnewood, PA 19096
215-955-6200
norman.rosenblum@jefferson.edu

Tatiana Sanses, MD 2013

2041 Georgia Ave
Washington DC, DC 20060
202-865-1164
tatiana.sanses@howard.edu

Carlos Sarsotti, MD 2018

Av Callao 875
CABA, Argentina 1023
011 48155818
carlos.sarsotti@hospitalitaliano.org.ar

Active Members

Joseph Schaffer, MD 2001
UT Southwestern Medical Center
Dallas, TX 75390
214-648-7211
joseph.schaffer@utsouthwestern.edu

Megan Schimpf, MD 2012
1500 E. Medical Center Dr L4100
Ann Arbor, MI 48109
734-647-5866
mschimpf@med.umich.edu

Jennifer Schmitt, DO 2020
347 N Smith Ave, Suite 203
St Paul, MN 55102
612-703-5264
Jenniferjschmitt84@gmail.com

Mitchell Schuster, MD 2012
1304 13th Ave SE, Suite B
Decatur, AL 35601
256-355-9711
Mschuster@obgynalabama.com

Jonathan Shaw, MD 2020
1 Medical Ctr Dr
Lebanon, NH 03756
603-653-9312
Jonathan.s.shaw@hitchcock.org

Jonathan Shepherd, MD 2016
St Francis Hospital, Dept of ObGyn
Hartford, CT 06105
860-714-4595
Drjon.shepherd@gmail.com

S. Abbas Shobeiri, MD 2009
F-2 105.14, 3300 Gallows Rd
Falls Church, VA 22042
703-706-6842
abbas.shobeiri@inova.org

David Shveiky, MD 2015
Dept. of Ob/Gyn, Hadassah
Medical Ctr.
Jerusalem, Israel 12000
dshveiky@gmail.com

Lauren Siff, MD 2020
1250 E Marshall St Box 980034
Richmond, VA 23298
804-628-7023
laurensiff@gmail.com

Ambereen Sleemi, MD, MPH 2014
22 Prospect Park SW
Brooklyn, NY 11215
917-324-8348
osleemi@yahoo.com

Scott W. Smilen, MD 1999
1945 Route 33, 2nd Floor
Neptune, NJ 07753
732-776-3790
scott.smilen@hackensackmeridian.org

Katelyn Smithling, MD 2020
3300 Main St, Suite 4B
Springfield, MA 01107
315-771-7685
Katelyn.smithling@gmail.com

Andrew Sokol, MD 2011
106 Irving St, NW
Washington, DC 20010
202-877-6526
asokol72@gmail.com

Eric Sokol, MD 2014
300 Pasteur Drive, Room G304
Stanford, CA 94305
650-736-4137
esokol@stanford.edu

Active Members

John W. Spurlock, MD 1997

433 E. Broad St, Unit 1
Bethlehem, PA 18018
610-868-5780
jonthebold@aol.com

Edward Stanford, MD 2004

475 Van Slyke Ct
Ripon, CA 95366
209-253-6319
Dredstanford@gmail.com

Adam Steinberg, DO 2009

Hartford Hospital
West Hartford, CT 06117
860-670-5161
acsteinberg06@yahoo.com

Thomas G. Stovall, MD 1991

7800 Wolf Trail Cove
Germantown, TN 38138
901-682-9222
tstovall@whsobbgyn.com

Kris Strohbehn, MD 2003

Dartmouth-Hitchcock Medical Center
Lebanon, NH 03768
603-653-9312
kris.strohbehn@hitchcock.org

Joe T Stubbs, MD 2008

5356 Reynolds Street Suite 301
Savannah, GA 31405
912-303-0891
stubbs@urogynsavannah.com

Mallory Stuparich, MD 2019

19330 Jesse Lane, Suite 100
Riverside, CA 92508
844-827-8000
mallory.stuparich@gmail.com

Carmen Sultana, MD 2011

234 East 149th Street
Bronx, NY 10451
646-879-0335
carmensultana@comcast.net

Robert L. Summitt, MD 1994

7800 Wolf Trail Cove
Germantown, TN 38138
rsummitt@whsobbgyn.com

Vivian Sung, MD 2009

101 Plain Street, 5th Floor
Providence, RI 02905
401-274-1122
vsung@wihri.org

Gary Sutkin, MD 2016

2311 Holmes St
Kansas City, MO 64108
816-235-6785
sutking@umkc.edu

Carolyn Swenson, MD 2019

1500 E. Medical Center Dr L4100
Ann Arbor, MI 48109
734-764-8429
scarolyn@med.umich.edu

Karl Tamussino, MD 1999

Medical University of Graz
A-8036 Graz, Austria 8036
+43 316 385 12201
karl.tamussino@medunigraz.at

Gerald B. Taylor, MD 2019

2001 Vail Ave, Ste 360
Charlotte, NC 28203
704-304-1160
bernard.taylor@atriumhealth.org

Active Members

James Theofrastous, MD 2000

Western Carolina Women's Specialty
Center
Asheville, NC 28806
828-670-5665
theo1@wcwsc.com

Marc Togliam, MD 2004

Suite 3404, HealthCare Center 3 1098
W. Baltimore Pike
Media, PA 19063
610-627-4170
togliam@verizon.net

Mireille Truong, MD 2018

1250 E Marshall Street
Richmond, VA 23298
804-828-1809
mireille.truong@gmail.com

Paul Tulikangas, MD 2008

Hartford Hospital/University of
Connecticut
Hartford, CT 06106
860-972-4338
paul.tulikangas@hhchealth.org

Elena Tunitsky-Bitton, MD 2016

85 Seymour St
Hartford, CT 06106
860-972-4338
lena0605@gmail.com

Christine Vaccaro, DO 2011

8901 Wisconsin Ave
Bethesda, MD 20889
301-400-2469
vaccaro.christine@gmail.com

Heather van Raalte, MD 2013

10 Forrestal Road South
Princeton, NJ 08540
609-924-2230
vanraalte@princetonurogyn.com

R. Edward Varner, MD 1988

Dept. OB/GYN 1700 6th Ave South,
#10382
Birmingham, AL 35233
205-934-1867
evarner@uabmc.edu

Brett Vassallo, MD 2008

1875 Dempster St, Suite 665
Park Ridge, IL 60068
847-825-1590
bvassallo@comcaStnet

Dionysios Veronikis, MD 1999

Mercy Hospital - St Louis
St Louis, MO 63141
314-251-6753
dveronikis@stlgyngsurgery.com

Anthony G. Visco, MD 2008

Duke Urogynecology
Durham, NC 27715
919-401-1006
anthony.visco@duke.edu

Emily Von Bargen, DO 2020

55 Fruit St, Founders 5
Boston, MA 02114
617-643-4735
Emily.vonbargen@gmail.com

Cliff Wai, MD 2013

5323 Harry Hines Blvd.
Dallas, TX 75390
214-648-6430
clifford.wai@utsouthwestern.edu

Active Members

Stacey Wallach, MD 2016

4860 y st suite 2500acc
Sacramento, CA 95817
916-734-6900
sjwallach@ucdavis.edu

Christopher Walshe, MD 2003

1035 Champions Way
Suffolk, VA 23435
757-686-4655
cjwalshe@msn.com

Andrew J. Walter, MD 2001

TPMG
Roseville, CA 95661
916-447-5809
andrew.j.walter@kp.org

Mark D. Walters, MD 1990

9500 Euclid Ave, Desk A81
Cleveland, OH 44195
216-445-6586
walterm@ccf.org

Renee Ward, MD 2014

1162 21st Avenue South
Nashville, TN 37232
615-322-8968
renee.ward@vanderbilt.edu

Blair Washington, MD 2014

Seattle, WA 98101
blairwashington1@gmail.com

Megan Wasson, DO 2019

5777 E Mayo Blvd
Phoenix, AZ 85054
480-342-0612
wasson.megan@mayo.edu

Emily Weber LeBrun, MD 2014

1600 SW Archer Road
Gainesville, FL 32610
352-273-7660
eweber@ufl.edu

MaryEllen Wechter, MD 2018

836 Prudential Dr
Atlantic beach, FL 32207
904-399-4862
mewechter@gmail.com

Alison Weidner, MD 2005

5324 McFarland Dr Suite 310
Durham, NC 27707
919-401-1000
alison.weidner@duke.edu

Thomas Wheeler, II, MD 2009

890 W. Faris Rd.
Greenville, SC 29605
864-455-1607
Thomas.wheeler@prismahealth.org

Terry White, MD 2016

1411 E. 31st Street
Oakland, CA 94602
510-437-4780
t_white17@yahoo.com

James Whiteside, MD 2014

231 Albert Sabin Way
Cincinnati, OH 45267
513-475-8713
whitesje@ucmail.uc.edu

Cecilia Wieslander, MD 2018

14445 Olive View Drive
Sylmar, CA 91342
747-210-3222
cecilia.wieslander@hotmail.com

Active Members

Anne Wiskind, MD 1995

1701 Hardee Avenue
Atlanta, GA 30310
404-321-6111
awiskind@gmail.com

Kyle Wohlrab, MD 2017

101 Plain St
Providence, RI 02903
401-274-1122
kwohlab@wihri.org

Sara Wood, MD 2018

621 S. New Ballas Rd Suite 2002B
Saint Louis, MO 63141
314-251-6758
sara.wood2@mercy.net

Patrick J. Woodman, DO 2009

30055 Northwestern Highway
Farmington Hills, MI 48334
248-737-4600
Patrick.Woodman@gmail.com

Allison Wyman, MD 2019

2 Tampa General Circle
Tampa, FL 33306
813-259-8500
awayman@health.usf.edu

Linda Yang, MD 2019

2160 S. First Ave
Maywood, IL 60153
708-216-2190
lindac.yang@gmail.com

Ladin Yurteri-Kaplan, MD 2017

622 West 168th Street, PH16-Rm128
New York, NY 10032
212-305-1107
ladinyurterikaplan@gmail.com

Carl Zimmerman, MD 2000

Vanderbilt Univ. School of Medicine
Nashville, TN 37232
615-322-8968
cwzimmer@aol.com

Halina Zyczynski, MD 2013

Magee-Womens Hospital
Pittsburgh, PA 15213
412-641-7850
hzychynski@mail.magee.edu

Life Members

Philip D. Abbott, MD 2004

3700 Rufe Snow Dr
Fort Worth, TX 76180
aa2266@aol.com

David Adamson, MD 1994

20665 Fourth Street, Suite 201
Saratoga, CA 95070
gdadamson@arcfertility.com

W. Allen Addison, MD Charter

PO Box 727
Hillsborough, NC 27278
addisona@embarqmail.com

William S. Alford, DO 2003

4804 Bridlewood CR NE
Canton, OH 44714
walford1@neo.rr.com

Lester A. Ballard, MD 1995

Hunting Valley, OH 44022

Alfred Bent, MD 2007

PO Box 367
Brookfield, NS, Canada B0N 1C0
alfred.bent@gmail.com

James G. Blythe, MD Charter

231 Northwind Dr
Brandon, MS 39047

John W. Boldt, MD Charter

The University of Texas
San Antonio, TX 78229
vlboldt@gmail.com

Mark Boyd, MD 1991

Greene Avenue Clinic
Montreal, Quebec, CA H3Z2A4
Drboyd@sympatico.ca

James L. Breen, MD Charter

14 N. Calibogue Cay
Hilton Head Island, SC 29928
breen9526@aol.com

John Breen, MD 1997

2821 Michaelangelo Dr
Edinburg, TX 78539
956-362-3566
jmbreenmd@gmail.com

David S. Chapin, MD 1997

20 Cormorant Rd
North Truro, MA 02652
dchapin@bidmc.harvard.edu

Stephen A. Cohen, MD Charter

Virginia Commonwealth University
Richmond, VA 23298
stcohen@vcu.edu

Bruce H. Druker, MD Charter

18242 Lost Creek Lane
Spring Lake, MI 49456
bedruk@charter.net

Harold P. Drutz, MD 1996

Baycrest Health Sciences
Toronto, ON, Canada M6A 2E1
hpdrutz@gmail.com

Paul Fine, MD 2009

5121 Oak Court
Dickinson, TX 77539
281-337-5879
pfine@bcm.edu

Melvin V. Gerbie, MD 1989

Northwestern University
Medical School
Chicago, IL 60610
mpgerbs@aol.com

Life Members

Gerald Glowacki

Glen Arm, MD 21057
gglow@comcast.net

Robert Hebertson, MD *Charter*

988 Eagle Way
North Salt Lake, UT 84054

Patrick Hogston, MD 2003

11 Brading Ave
Southsea, Hampshire, UK PO4 9QJ
patrick.hogston@ntlworld.com

William J. Hoskins, MD 1988

515 East 72
New York, NY 10021
wjhosk@aol.com

Harvey T. Huddleston, MD 1995

Big Bend Regional Medical Center
Alpine, TX 79830

William W. Hurd, MD 1995

1209 Montgomery Highway
Birmingham, AL 35216
whurd@asrm.org

W. Glenn Hurt, MD 1997

1600 Westbrook Ave, Pavilion
Apt. 8273
Richmond, VA 23227
wghurt@vcu.edu

Frederick W. Jelovsek, MD 1992

3520 Homewood Dr
Johnson City, TN 37604

Van R. Jenkins II, MD 1997

2980 Four Pines Dr #4
Lexington, KY 40502
van@ure.net

Alan L. Kaplan, MD 1988

Baylor College of Medicine
Houston, TX 77030

Ernest I. Kohorn, MD 1985

820 Oakwood Road,
Orange, CT 06477
erneStkohorn@yale.edu

Eberhard C. Lotze, MD 1987

9333 Memorial Drive, # 105
Houston, TX 77024
eclotze@sbcglobal.net

Robert Maier, MD 1989

UT Houston Medical School
Houston, TX 77026

L. Russell Malinak, MD *Charter*

Baylor College of Medicine
Brenham, TX 77833
lrmbam@aol.com

Byron J. Masterson, MD 1987

7413 Featherstone Blvd.
Sarasota, FL 34238

C. Frank McDonell Jr, MD *Charter*

210 13th Avenue Place NW
Hickory, NC 28601

Frederick W. McLean, MD 1996

University of Florida
College of Medicine
Gainesville, FL 32610

G. Rodney Meeks, MD 1989

207 Audubon Point Dr
Brandon, MS 39047
grmeeks@bellsouth.net

Life Members

Stephen Metz, MD 1997

171 Coventry Lane
Longmeadow, MA 01106
smetz@massmed.org

John F. Moffett, MD Charter

2610 E. Levingwood Rd.
Lake Charles, LA 70611
jemoffett@netcommander.com

Ana A. Murphy, MD 1993

Medical College of Georgia
Augusta, GA 30912

Jonathan M. Niloff, MD 1991

Harvard Medical School
West Newton, MA 02465
jniloff@medventive.com

Thomas E. Nolan, MD 1992

403 Pincrest
Davidson, NC 28036
tenolanmd@gmail.com

Karl C. Podratz, MD 1986

Mayo Clinic
Rochester, MN 55905
podratz.karl@mayo.edu

Charles Portera, MD 1989

Chattanooga, TN 37404

Paul A. Riss, MD 2008

Anna Frauer Gasse 2
Vienna, Austria
paul.riss@gmail.com

John A. Rock, MD 1987

Sr. Vice President of Medical Affairs
Miami, FL 33199
rockj@fiu.edu

Robert E. Rogers, MD Charter

11065 Spice Lane
Fishers, IN 46038

Jim W. Ross, PhD, MD 2003

505 E. Romie Lane
Salinas, CA 93901
crmfc2012@gmail.com

Joseph C. Scott, MD 1987

1502 South 113 Plaza
Omaha, NE 68144
scotyspond@aol.com

George L. Sexton, MD 1990

223 Springmont Dr
Wyomissing, PA 19610
glsevs@comcaStnet

Bob Shull, MD 1988

Scott & White Clinic
Temple, TX 76508
bshull@sw.org

C. Robert Stanhope, MD Charter

Mayo Clinic
Rochester, MN 55905
stanhope.robert@mayo.edu

Keith Stone, MD 1988

Univ. of Florida at Shands
Gainesville, FL 32610
stonek@obgyn.ufl.edu

O. Eduardo Talledo, MD 1990

Medical College of Georgia
Augusta, GA 30912
cordoba@comcaStnet

Robert J. Thompson, MD 1990

8691 San Servera Dr, West
Jacksonville, FL 32217

Life Members

Peter K. Thompson, MD
Houston, TX

M. Chrystie Timmons, MD 1990
Gerigyn, PA
Chapel Hill, NC 27517
gerigyn@bellsouth.net

Daniel A. Triplett, MD Charter
936 Scott Dr
Liberty, MO 64068
pdtrip@aol.com

L. Lewis Wall, PhD, MD 1996
Dept. Anthropology,
Campus Box 1114
St Louis, MO 63130
walll@wustl.edu

Anne M. Weber, MD 1998
NICHD
Pittsburg, PA 15238
aweber218@comcast.net

Sheldon Weinstein, MD 1994
Presbyterian Hospital of Dallas
Dallas, TX 75231
weinstein@sbcglobal.net

Clifford R. Wheelless, MD 1994
6132 Allwood Court Apt213
Baltimore, MD 21210
cwheel@jhmi.edu

Tiffany J Williams, MD Charter
6550 Manasota Key Road
Englwood, FL 34223

Arthur C. Wittich, DO 2001
COL, MC, USA
Lorton, VA 22079
drwittich@aol.com

Stephen B. Young, MD 1995
6734 Route 9
Rhinebeck, NY 13572
hipurogyn@gmail.com

Honorary Members

Ted Anderson, MD

Vanderbilt University
Nashville, TN 37232

Anthony Atala, MD

Wake Forest Univ. Baptist Hospital
Winston-Salem, NC 27157

James Bagian, MD

21537 Holmbury
Northville, MI 48167

Ethan Balk, MD

Center for Evidence Synthesis
in Health
Providence, RI 02912

Linda Bradley, MD

Cleveland Clinic
Cleveland, OH 44195

Sandra Carson, MD

127 Quay Street
Alexandria, VA 22314

William A. Cliby, MD

Mayo Clinic Dept. OB/GYN
Rochester, MN 55905

I.Kelman Cohen, MD

Medical College of Virginia
Richmond, VA 23298

Marcela G. del Carmen, MD, MPH

Harvard Medical School
Boston, MA 02115

Nancy W. Dickey, MD

147 Joe H. Reynolds Medical Bldg.
College Station, TX 77843

Tommaso Falcone, MD

9500 Euclid Avenue Desk A81
Cleveland, OH 44195

Norman F. Gant, MD

3425 Lookout Court
Grapevine, TX 76051

Alan E. Guttmacher, MD

Director, Eunice Kennedy Shriver
Bethesda, MD 20892

Katherine Hartmann, MD

2525 West End Avenue Suite 600
Nashville, TN 37203

Richard E. Hawkins, MD

ABMS
Chicago, IL 60601

Paul Hilton, MD

28A Deramore Park
Belfast, IRL BT9 5JU

Shukri Khuri, MD

Brigham and Women's Hospital
West Roxbury, MA 02132

Clifford Ko, MD

633 N. St Clair
Chicago, IL 60611

Heinz Koelbl, MD

Medical University of Vienna
Vienna, AUT

Hal Lawrence, MD

409 12th Street SW
Washington, DC 20024

Honorary Members

Javier Magrina, MD

5777 E Mayo Blvd
Phoenix, AZ 85054

Susan Meikle, MD

4899 Montrose Blvd #708
Houston, TX 77006

Ichiro Nagata, MD

Dept. OB/GYN,
Saitama Medical School
Saitama 359-0041, Japan

Ingrid Nygaard, MD

30 N 1900 East
Salt Lake City, UT 84132

Steven Palter, MD

246 Crossways Park Drive West
Woodbury, NY 11797

Ajay Rane, MD

3 Grange Court Belgian Gardens
Townsville, Australia 4810

Richard Reznick, MD

Macklem House, 18 Barrie St
Kingston, ON, Canada K7L 3N6

Richard M. Satava, MD

University of Washington School of
Medicine
Seattle, WA 98111

Amit Sood

200 First Street
Rochester, MN 55905

In Memoriam

Michael Aronson, MD
Wayne F. Baden, MD
Hugh R.K. Barber, MD
Robert H. Barter, MD
Edwin A. Bowman, MD
John Brewer, MD
Herbert J. Buchsbaum, MD
Edward B. Cantor, MD
Joel Childers, MD
Sterling Crawford, MD
William E. Crisp, MD
Joseph DeCenzo, MD
Leo J. Dunn, MD
Charles Easterday, MD
Thomas Elkins, MD
Charles E. Flowers, MD
Robert R. Franklin, MD
Edward G. Friedrich, Jr., MD
Donald G. Gallup, MD
Celso-Ramon Garcia, MD
Caterina A. Gregori, MD
Frank Greiss, MD
Marvin H. Terry Grody, MD
C. Paul Hodgkinson, MD
Frederick J. Hofmeister, MD
W. Powell Hutcherson, MD
W. Byron Inmon, MD
John Isaacs, MD
Neil D. Jackson, MD
George E. Judd, MD
Thomas Julian, MD
Kermit Krantz, MD
Philip Krupp, MD
S. Robert Kovac, MD
Henry H. Lansman, MD
Stephen L. Larson, MD
Thomas Leavitt, Jr., MD
Frederick Y.L. Lee, MD
Raymond A. Lee, MD
William A. Little, MD
Oscar Litwak, MD
Robert J. Luby, MD

Edwin McClain, MD
Abe Mickal, MD
George W. Mitchell, MD
Fred Miyazaki, MD
John McLean Morris, MD
George W. Morley, MD
David H. Nichols, MD
Robert C. Park, MD
Roy T. Parker, MD
Warren E. Patow, MD
Jack W. Pearson, MD
Robert F. Porges, MD
Charles Powell, MD
Joseph H. Pratt, MD
Konald A. Prem, MD
Brooks Ranney, MD
A. Cullen Richardson, MD
Bobby A. Rimer, MD
Euan G. Robertson, MD
Jack Robertson, MD
Stanley F. Rogers, MD
Keith P. Russell, MD
Thomas Russell, MD
David C. Sabiston, MD
Richard J. Scotti, MD
George T. Schneider, MD
Richard H. Schwarz, MD
Martin L. Stone, MD
Donald P. Swartz, MD
Richard Symmonds, MD
M. Leon Tancer, MD
Richard TeLinde, MD
John D. Thompson, MD
John C. Weed, Jr., MD
Charles A. White, MD
George D. Wilbanks, MD
Winfred Wiser, MD
Benjamin H. Word, MD
James P. Youngblood, MD
J. Benjamin Younger, MD
Robert F. Zacharin, MD

Premier Sponsors

SGS THANKS OUR PREMIER SPONSORS FOR THEIR SUPPORT.

Diamond Sponsorship



Gold Sponsorship



Premier Sponsors

SGS THANKS OUR PREMIER SPONSORS FOR THEIR SUPPORT.

Silver Sponsorship



Premier Sponsors

SGS THANKS OUR PREMIER SPONSORS FOR THEIR SUPPORT.

Bronze Sponsorship



FEMSelect™
EnPlace

gynesONICS®

neomedic
international

OLYMPUS®

UroCure

ADVANCING WOMEN'S HEALTH

Administrative Staff



SOCIETY OF
GYNECOLOGIC SURGEONS

Nancy Frankel, PhD

Executive Director
nancy@sgsonline.org

Lennie Siegel, BBA, CPA

Director of Finance
lennie@sgsonline.org

Taylor O'Sullivan

Associate Executive Director
taylor@sgsonline.org

Caitlin Barry

Membership Manager
membership@sgsonline.org

Mailing Address

1061 E Main St., Suite 300
East Dundee, IL 60118

Phone

(847) 752-5355

Fax

(847) 960-3861

Website

www.sgsonline.org

SGS Annual Course in Advanced Gynecologic Surgery **VIRTUAL EVENT**

More Details Coming Soon!



47th SGS Annual Scientific Meeting

March 21 – 24, 2021

Westin Mission Hills
Palm Springs, California



SGS SOCIETY OF
GYNECOLOGIC SURGEONS
